

LOC/DME I-EKO <b>108.5</b> Chan <b>22</b>	APP CRS <b>243°</b>	Rwy Ldg TDZE Apt Elev	<b>6418</b> <b>5064</b> <b>5140</b>
---	------------------------	-----------------------------	---

LDA/DME RWY 24  
ELKO RGNL (EKO)

 Inoperative table does not apply to Cats A and B. For inop MALSR, increase S-24 Cat C and D visibility to 2 miles. Rwy 24 helicopter visibility reduction below  $\frac{3}{4}$  SM NA. Circling Rwy 24 NA at night.

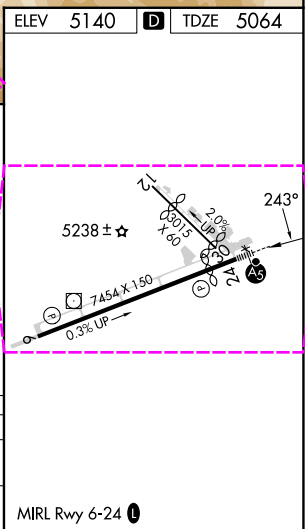
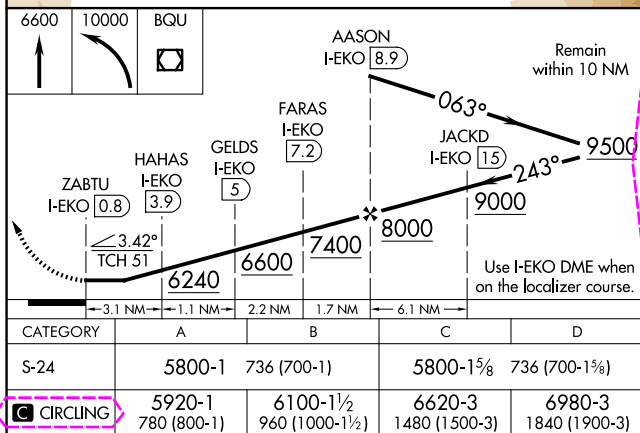
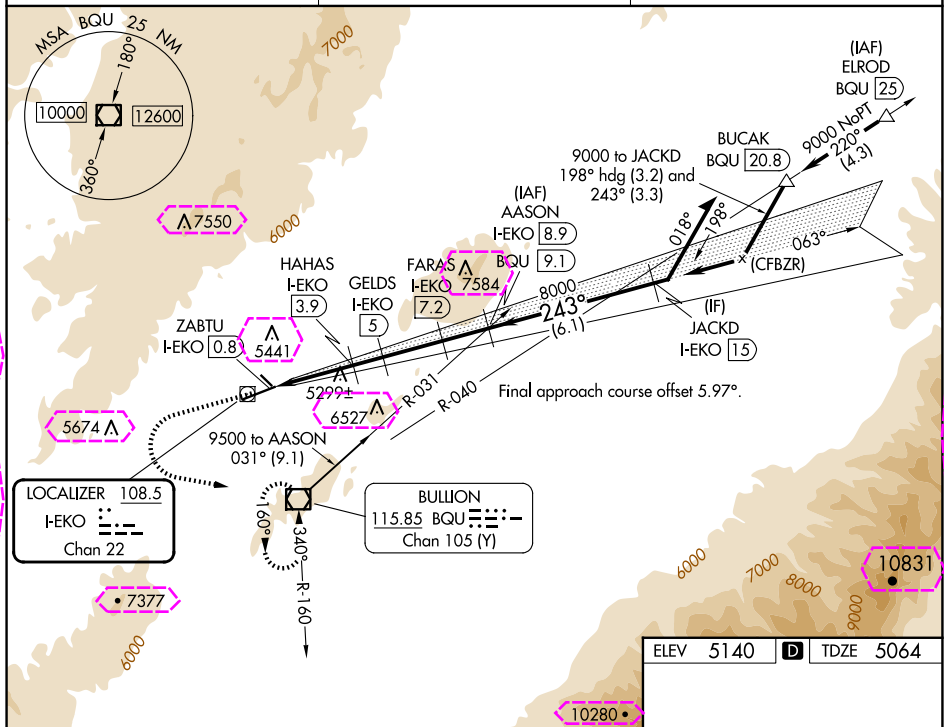
**MALSR**

**A5**

**T**

**MISSED APPROACH:** Climb to 6600 then climbing left turn to 10000 direct BQU VOR/DME and hold, continue climb-in-hold to 10000.

ASOS <b>119,275</b>	SALT LAKE CENTER <b>132.25 338.35</b>	UNICOM <b>123.0 (CTAF) 0</b>
------------------------	--	---------------------------------



ELKO, NEVADA

Amdt 6A 31JAN19

40°49'N-115°47'W

ELKO RGNL (EKO)

LDA/DME RWY 24

SW-4, 10 JUL 2025 to 07 AUG 2025

SW-4, 10 JUL 2025 to 07 AUG 2025

ELKO, NEVADA

AL-129 (FAA)

25219

LOC/DME I-EKO <b>108.5</b> Chan <b>22</b>	APP CRS <b>243°</b>	Rwy Ldg TDZE Apt Elev <b>6418</b> <b>5064</b> <b>5140</b>
---	------------------------	--

# LDA/DME RWY 24

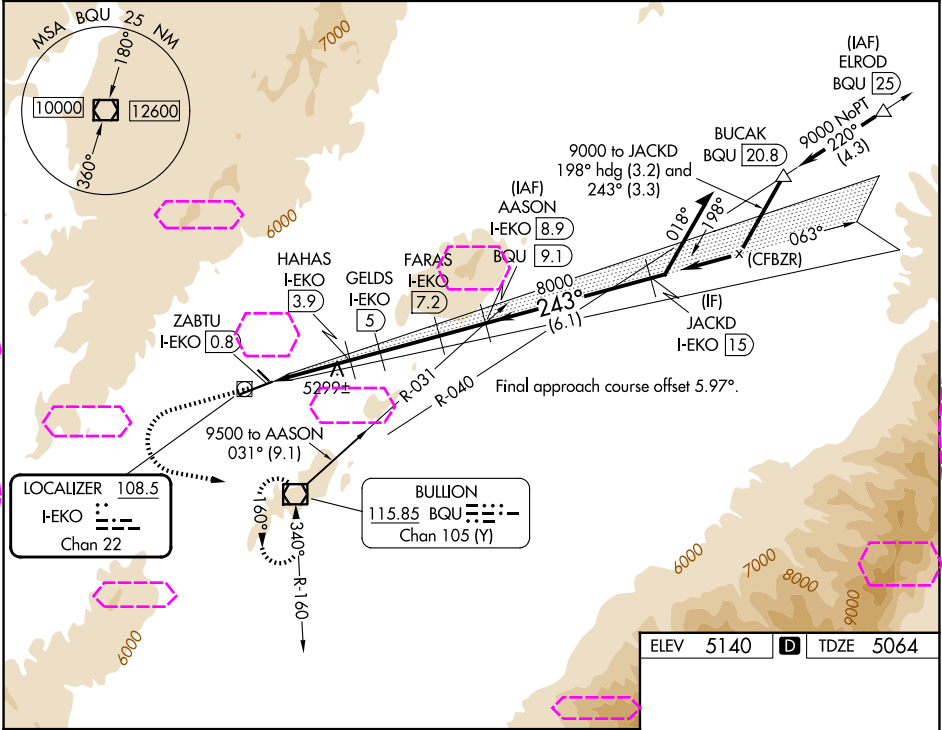
ELKO RGNL (EKO)

**⚠** Inoperative table does not apply to Cats A and B. For inop MALSR, increase S-24 Cat C and D visibility to 2 miles. Rwy 24 helicopter visibility reduction below 3/4 SM NA. Circling Rwy 24 NA at night.

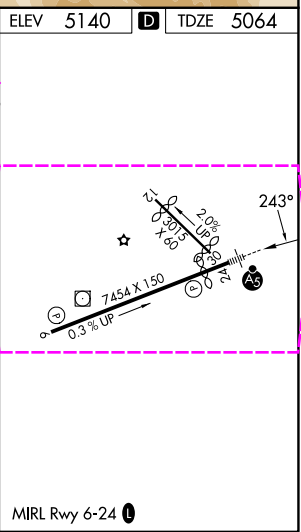
**MALSR**

**MISSED APPROACH:** Climb to 6600 then climbing left turn to 10000 direct BQU VOR/DME and hold, continue climb-in-hold to 10000.

ASOS <b>119.275</b>	SALT LAKE CENTER <b>132.25 338.35</b>	UNICOM <b>123.0 (CTAF) 0</b>
------------------------	--	---------------------------------



6600	10000	BQU				
↑	↷	◻				
			AASON I-EKO [8.9]		Remain within 10 NM	
			FARAS I-EKO [7.2]	JACKD I-EKO [15]	063° 243°	
ZABTU I-EKO [0.8]			HAHAS I-EKO [3.9]	GELDS I-EKO [5]	9500	
3.42° TCH 51			6240		8000	
3.1 NM			1.1 NM	2.2 NM	1.7 NM	6.1 NM
CATEGORY			A	B	C	D
S-24			5800-1 736 (700-1)		5800-1 <sup>5</sup> / <sub>8</sub> 736 (700-1 <sup>5</sup> / <sub>8</sub> )	
CIRCLING			5920-1 780 (800-1)		6100-1 <sup>1</sup> / <sub>2</sub> 960 (1000-1 <sup>1</sup> / <sub>2</sub> )	
			6620-3 1480 (1500-3)		6980-3 1840 (1900-3)	



ELKO, NEVADA  
Amdt 6A 31 JAN 19

40°49'N-115°47'W

# LDA/DME RWY 24

ELKO RGNL (EKO)

SW-4, 07 AUG 2025 to 04 SEP 2025

SW-4, 07 AUG 2025 to 04 SEP 2025

MIRL Rwy 6-24 0