

DAGGETT, CALIFORNIA

AL-104 (FAA)

23334

VORTAC DAG 113.2 Chan 79	APP CRS 224°	Rwy Idg TDZE Apt Elev	5123 1918 1930
--	------------------------	-----------------------------	---

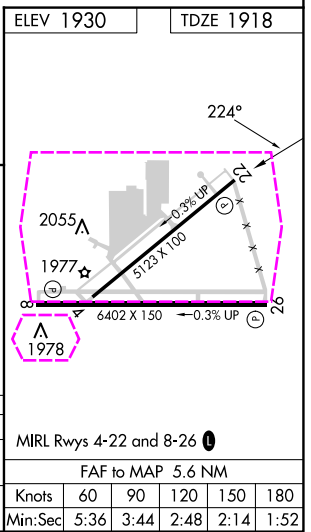
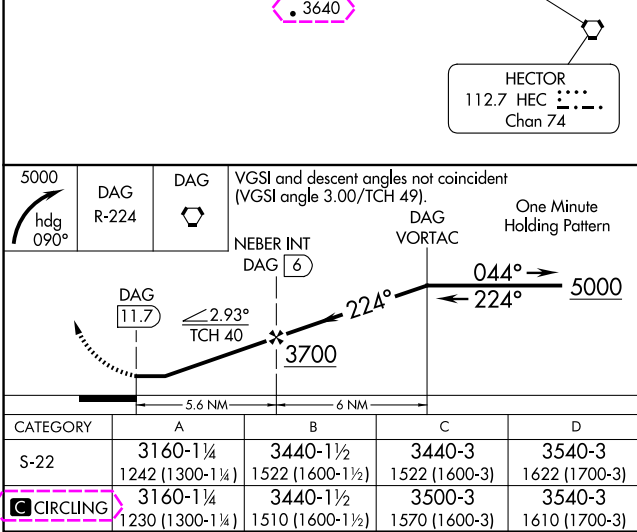
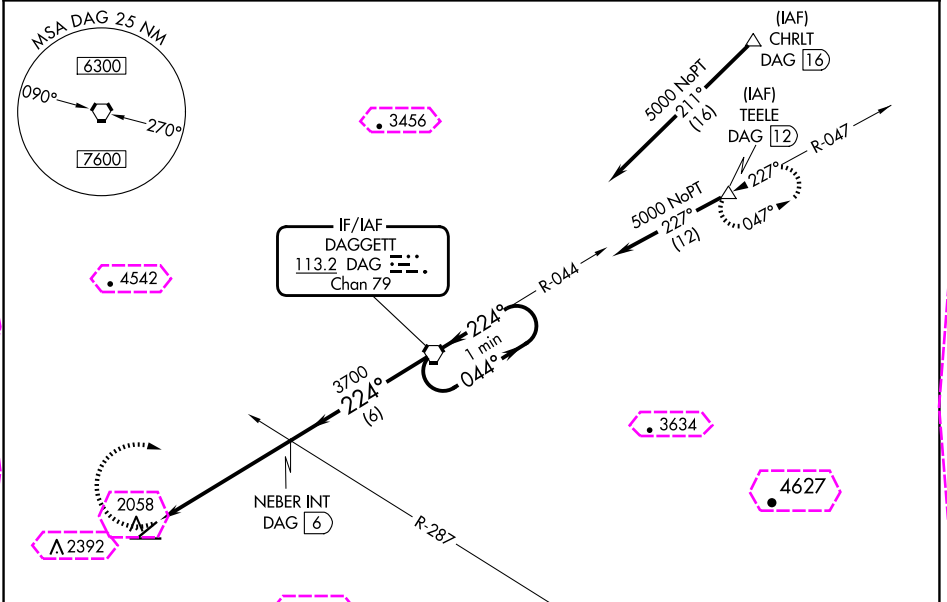
VOR or TACAN RWY 22

BARSTOW-DAGGETT (DAG)

⚠ Circling NA for Cat D south of Rwy 8-26.

MISSED APPROACH: Climbing right turn to 5000 via heading 090° and via DAG VORTAC R-224 to DAG VORTAC and hold (TACAN aircraft climb to 6000 via DAG VORTAC R-047 to TEELE/DAG 12 DME and hold NE, LT 227° inbound).

ASOS 132.175	LOS ANGELES CENTER 132.5 284.7	UNICOM 123.0 (CTAF) 1
------------------------	--	---------------------------------



DAGGETT, CALIFORNIA
Amdt 10B 06DEC18

34°51'N-116°47'W

BARSTOW-DAGGETT (DAG) VOR or TACAN RWY 22

SW-3, 10 JUL 2025 to 07 AUG 2025

SW-3, 10 JUL 2025 to 07 AUG 2025

DAGGETT, CALIFORNIA

AL-104 (FAA)

25219

VORTAC DAG 113.2 Chan 79	APP CRS 224°	Rwy Ldg TDZE Apt Elev 5123 1918 1930
--	------------------------	--

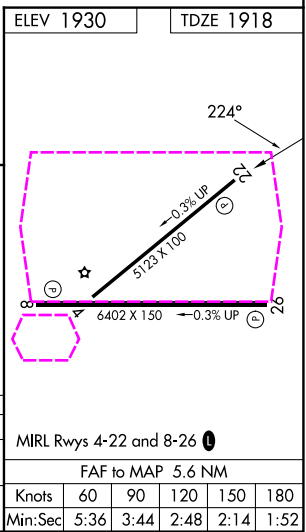
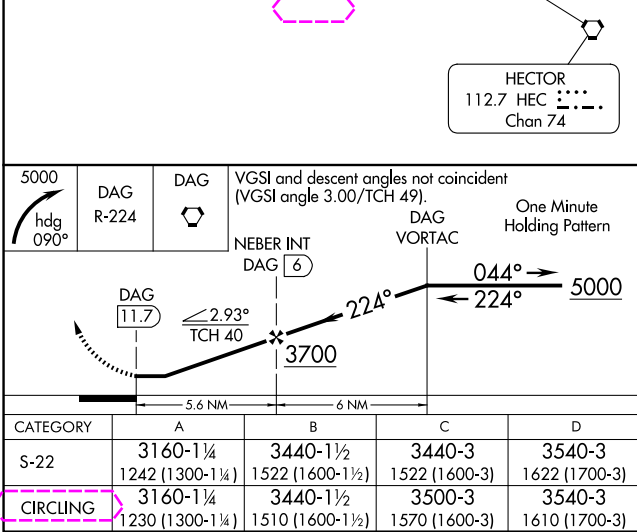
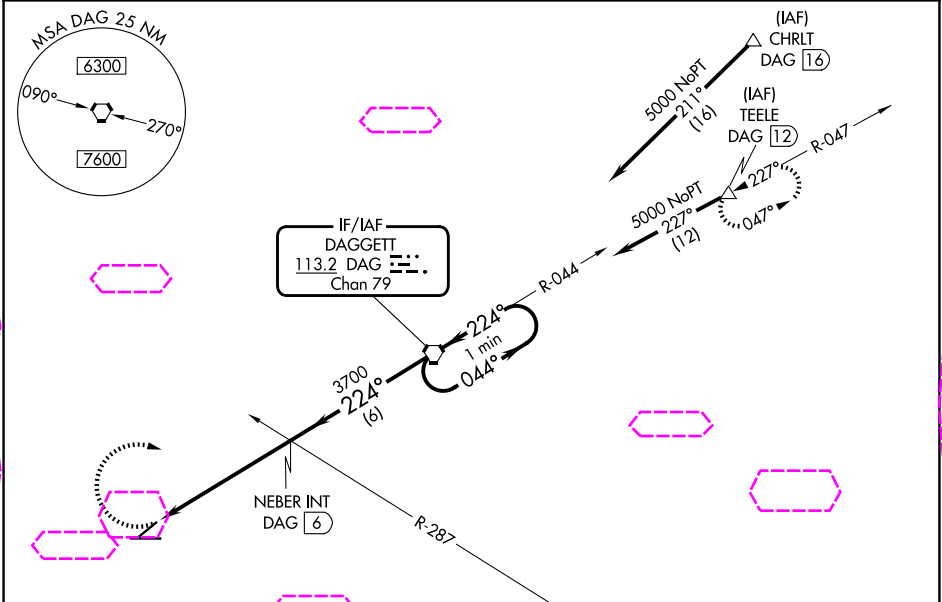
VOR or TACAN RWY 22

BARSTOW-DAGGETT (DAG)

⚠ Circling NA for Cat D south of Rwy 8-26.

MISSED APPROACH: Climbing right turn to 5000 via heading 090° and via DAG VORTAC R-224 to DAG VORTAC and hold (TACAN aircraft climb to 6000 via DAG VORTAC R-047 to TEELE/DAG 12 DME and hold NE, LT 227° inbound).

ASOS 132.175	LOS ANGELES CENTER 132.5 284.7	UNICOM 123.0 (CTAF) 1
------------------------	--	---------------------------------



DAGGETT, CALIFORNIA

Amdt 10B 06DEC18

34°51'N-116°47'W

BARSTOW-DAGGETT (DAG)

VOR or TACAN RWY 22

SW-3, 07 AUG 2025 to 04 SEP 2025

SW-3, 07 AUG 2025 to 04 SEP 2025