

DAGGETT, CALIFORNIA

AL-104 (FAA)

24053

WAAS CH <b>72813</b> <b>W26A</b>	APP CRS <b>255°</b>	Rwy Idg TDZE <b>1918</b> Apt Elev <b>1930</b>
--	------------------------	---

# RNAV (GPS) RWY 26

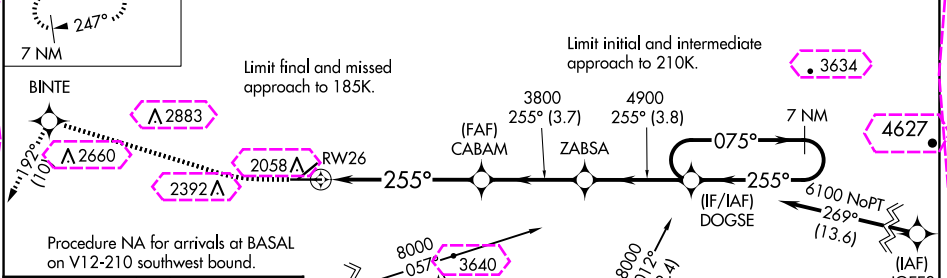
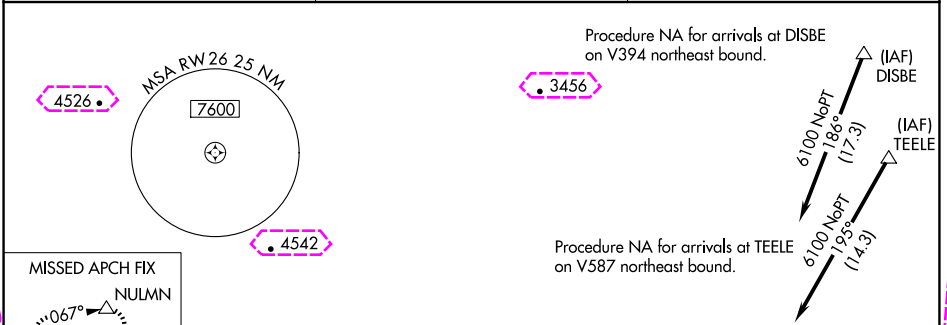
BARSTOW-DAGGETT (DAG)

RNP APCH.

▼ For uncompensated Baro-VNAV systems, LNAV/VNAV NA below -4°C or above 54°C. Circling NA for Cat D south of Rwy 8-26. Rwy 26 helicopter visibility reduction below ¾ SM NA.  
# Missed approach requires a minimum climb of 220 feet per NM to 8000.

MISSED APPROACH: Climb to 2600 on heading 255° then climb to 8000 direct BINTE and on track 192° to NULMN and hold, continue climb-in-hold to 8000.

ASOS <b>132.175</b>	LOS ANGELES CENTER <b>132.5 284.7</b>	UNICOM <b>123.0 (CTAF) 0</b>
------------------------	--	---------------------------------



CATEGORY	A	B	C	D
LPV DA#	2222-1	304 (300-1)		
LPV DA	2343-1 ¾	425 (500-1 ¾)		
LNAV/VNAV DA	2389-1 ½	471 (500-1 ½)		
LNAV MDA	2540-1	622 (700-1)	2540-1 ¾	622 (700-1 ¾)
<b>CIRCLING</b>	2640-1 710 (800-1)	2860-1 ¼ 930 (1000-1 ¼)	3500-3	1570 (1600-3)

DAGGETT, CALIFORNIA

Amdt 3A 06DEC18

34°51'N-116°47'W

BARSTOW-DAGGETT (DAG)

# RNAV (GPS) RWY 26

DAGGETT, CALIFORNIA

AL-104 (FAA)

25219

WAAS CH <b>72813</b> <b>W26A</b>	APP CRS <b>255°</b>	Rwy Ldg TDZE <b>1918</b> Apt Elev <b>1930</b>
--	------------------------	---

# RNAV (GPS) RWY 26

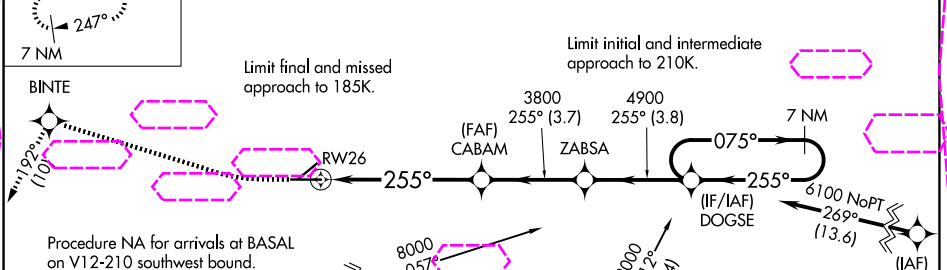
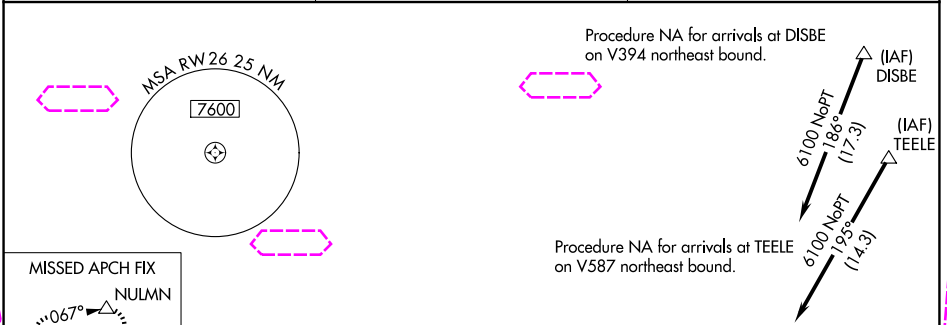
BARSTOW-DAGGETT (DAG)

**RNP APCH.**

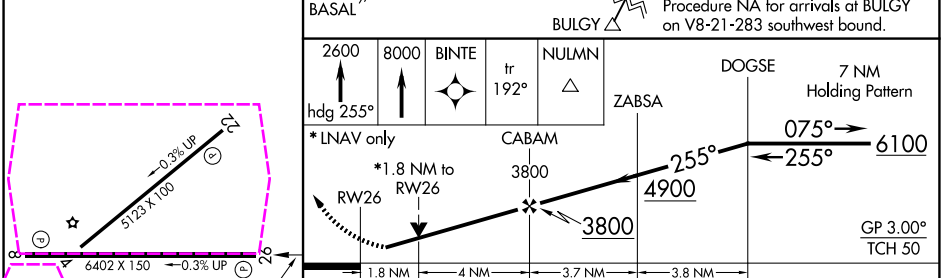
▼ For uncompensated Baro-VNAV systems, LNAV/VNAV NA below -4°C or above 54°C. Circling NA for Cat D south of Rwy 8-26. Rwy 26 helicopter visibility reduction below  $\frac{3}{4}$  SM NA.  
# Missed approach requires a minimum climb of 220 feet per NM to 8000.

**MISSED APPROACH:** Climb to 2600 on heading 255° then climb to 8000 direct BINTE and on track 192° to NULMN and hold, continue climb-in-hold to 8000.

ASOS <b>132.175</b>	LOS ANGELES CENTER <b>132.5 284.7</b>	UNICOM <b>123.0 (CTAF) 0</b>
------------------------	--	---------------------------------



ELEV 1930	TDZE 1918
-----------	-----------



CATEGORY	A	B	C	D
LPV DA#	2222-1	304 (300-1)		
LPV DA	2343-1 $\frac{3}{8}$	425 (500-1 $\frac{3}{8}$ )		
LNAV/VNAV DA	2389-1 $\frac{5}{8}$	471 (500-1 $\frac{5}{8}$ )		
LNAV MDA	2540-1	622 (700-1)	2540-1 $\frac{3}{4}$	622 (700-1 $\frac{3}{4}$ )
CIRCLING	2640-1 710 (800-1)	2860-1 $\frac{1}{4}$ 930 (1000-1 $\frac{1}{4}$ )	3500-3	1570 (1600-3)

DAGGETT, CALIFORNIA

Amdt 3A 06DEC18

34°51'N-116°47'W

BARSTOW-DAGGETT (DAG)

# RNAV (GPS) RWY 26