

DAGGETT, CALIFORNIA

AL-104 (FAA)

24025

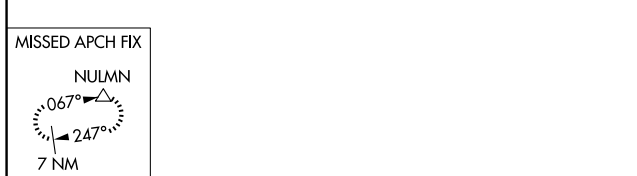
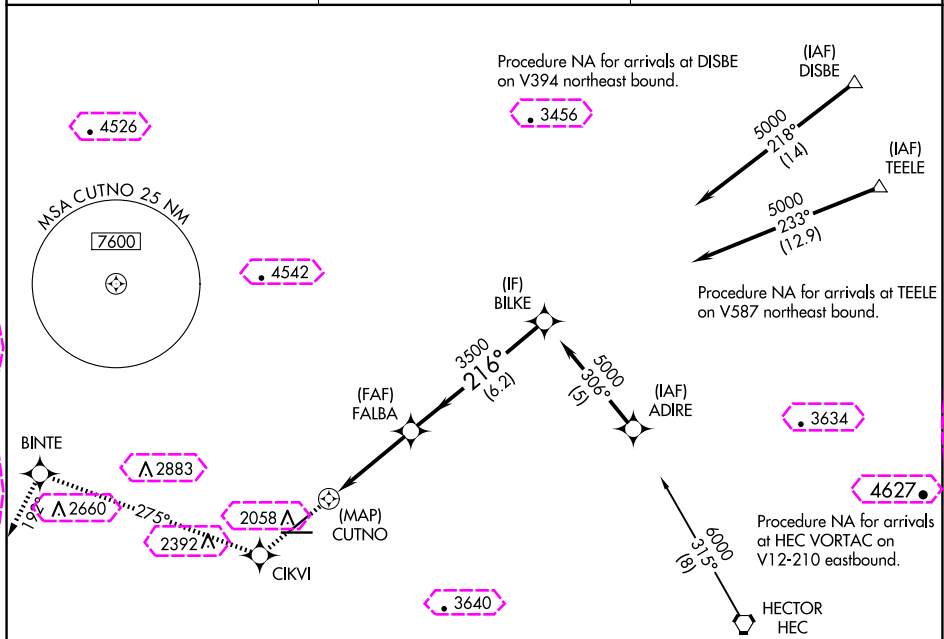
APP CRS 216°	Rwy Idg 5123 TDZE 1918 Apt Elev 1930
------------------------	---

RNAV (GPS) RWY 22

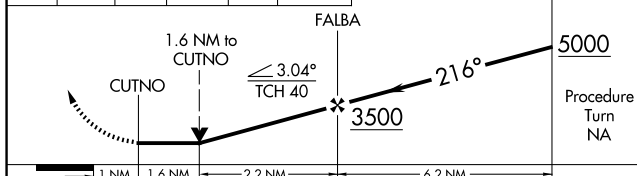
BARSTOW-DAGGETT (DAG)

RNP APCH. ▽ ▲	MISSED APPROACH: Climb to 8000 direct CIKVI and on track 275° to BINTE and on track 192° to NULMN and hold, continue climb-in-hold to 8000.
---------------------	---

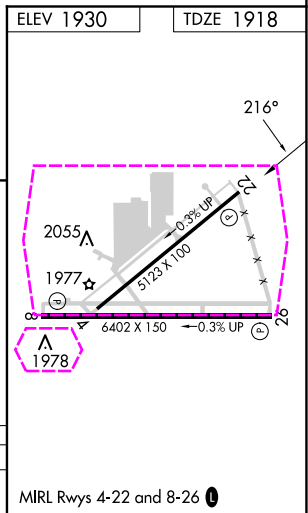
ASOS 132.175	LOS ANGELES CENTER 132.5 284.7	UNICOM 123.0 (CTAF) 0
------------------------	--	---------------------------------



8000	CIKVI	tr 275°	BINTE	tr 192°	NULMN	VGSI and descent angles not coincident (VGSI Angle 3.00/TCH 49).
------	-------	---------	-------	---------	-------	--



CATEGORY	A	B	C	D
LNNAV MDA	2800-1¼ 882 (900-1¼)		2800-2¾ 882 (900-2¾)	2800-3 882 (900-3)



DAGGETT, CALIFORNIA
Amdt 2C 18JUL19

34°51'N-116°47'W

BARSTOW-DAGGETT (DAG)
RNAV (GPS) RWY 22

DAGGETT, CALIFORNIA

AL-104 (FAA)

25219

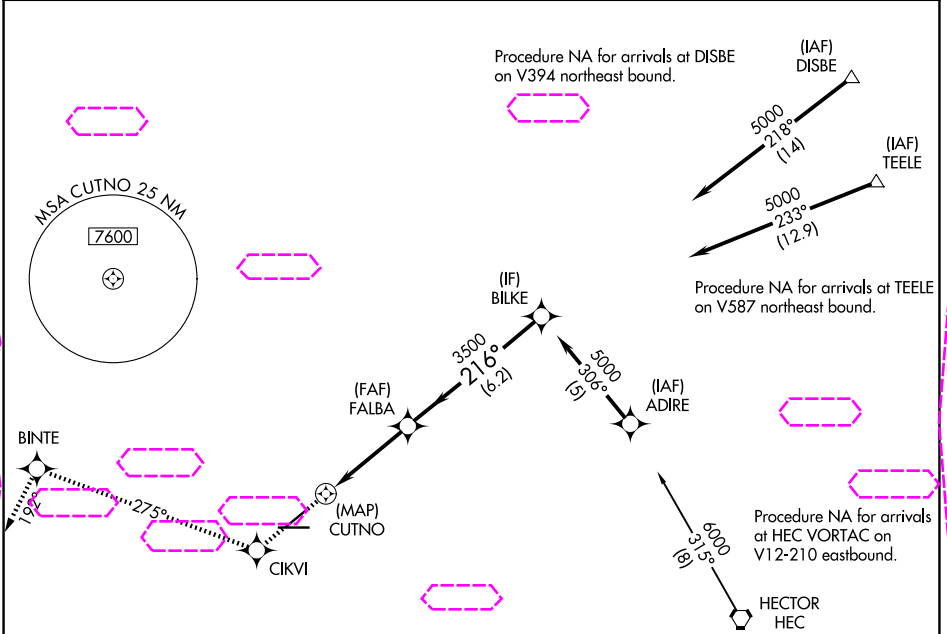
APP CRS 216°	Rwy Ldg 5123
TDZE 1918	
Apt Elev 1930	

RNAV (GPS) RWY 22

BARSTOW-DAGGETT (DAG)

RNP APCH. ▼ ▲	MISSED APPROACH: Climb to 8000 direct CIKVI and on track 275° to BINTE and on track 192° to NULMN and hold, continue climb-in-hold to 8000.
---------------------	---

ASOS 132.175	LOS ANGELES CENTER 132.5 284.7	UNICOM 123.0 (CTAF) 1
------------------------	--	---------------------------------



SW-3, 07 AUG 2025 to 04 SEP 2025

SW-3, 07 AUG 2025 to 04 SEP 2025

MISSED APCH FIX

NULMN

067°

247°

7 NM

ELEV 1930	TDZE 1918
-----------	-----------

8000

CIKVI

tr 275°

BINTE

tr 192°

NULMN

△

VGSI and descent angles not coincident (VGSI Angle 3.00/TCH 49).

1.6 NM to CUTNO

≤ 3.04°

TCH 40

CUTNO

FALBA

3500

216°

5000

BILKE

Procedure Turn NA

1 NM

1.6 NM

2.2 NM

6.2 NM

CATEGORY	A	B	C	D
LNAV MDA	2800-1¼	882 (900-1¼)	2800-2¾ 882 (900-2¾)	2800-3 882 (900-3)

MIRL Rwy 4-22 and 8-26 1

DAGGETT, CALIFORNIA
Amdt 2C 18JUL19

34°51'N-116°47'W

BARSTOW-DAGGETT (DAG)
RNAV (GPS) RWY 22