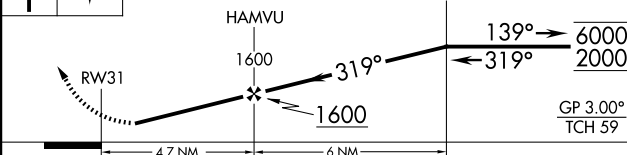
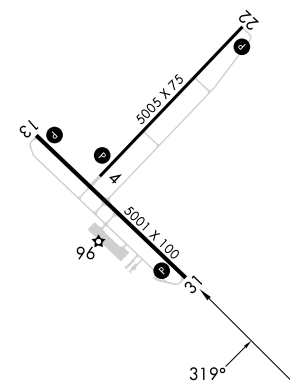
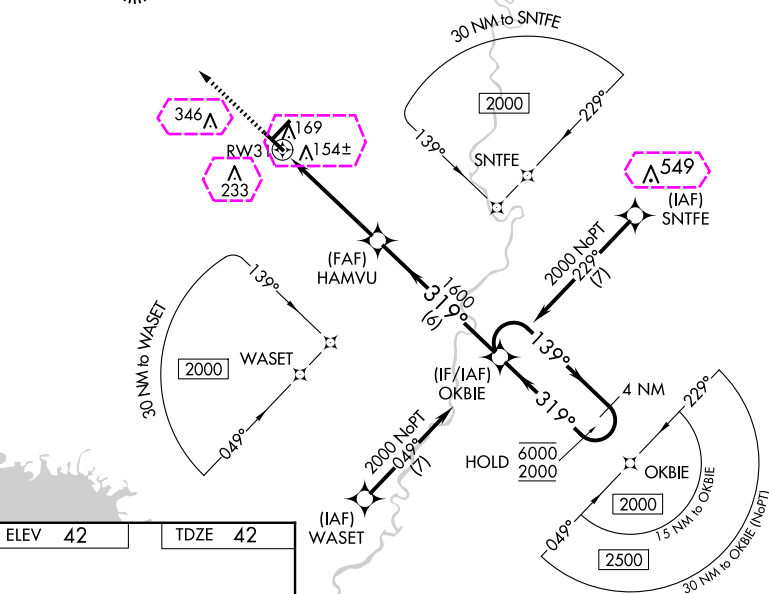



RNAV (GPS) RWY 31
CROSS CITY (CTY)

MISSED APPROACH:
Climb to 2000 direct
GRSSO and hold.

UNICOM
122.8 (CTAF) **L**

CATEGORY		A	B	C	D
LPV	DA	292-1		250 (300-1)	
LNAV/ VNAV	DA	423-1½		381 (400-1½)	
LNAV	MDA	500-1	458 (500-1)	500-1¾	458 (500-1¾)
 CIRCLING		500-1 458 (500-1)	520-1 478 (500-1)	660-1¾ 618 (700-1¾)	660-2 618 (700-2)

CROSS CITY (CTY)
RNAV (GPS) RWY 31

SE-3, 10 JUL 2025 to 07 AUG 2025

CROSS CITY, FLORIDA

AL-102 (FAA)

25219

WAAS CH 45620 W31A	APP CRS 319°	Rwy Ldg 5001 TDZE 42 Apt Elev 42
--	------------------------	---

RNAV (GPS) RWY 31

CROSS CITY (CTY)

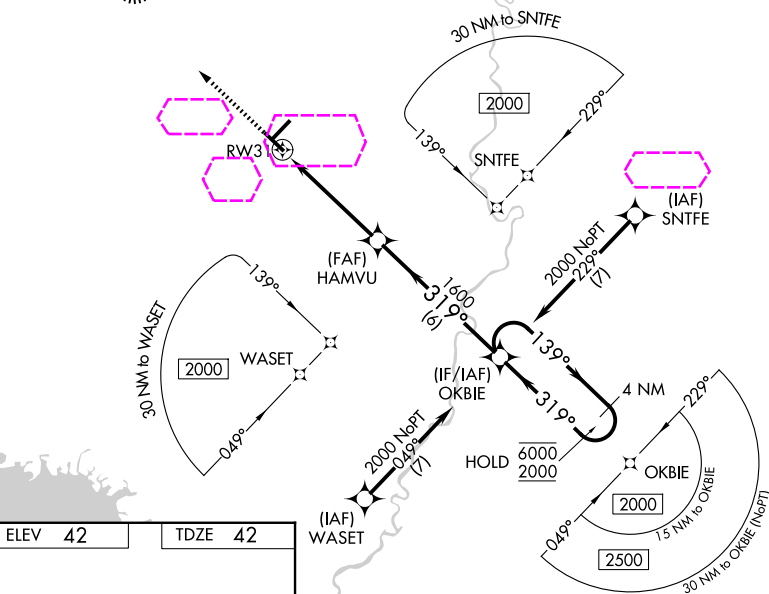
RNP APCH - GPS.

⚠ Rwy 31 helicopter visibility reduction below 1 SM NA. Baro-VNAV NA when using X60 altimeter setting. For uncompensated Baro-VNAV systems, LNAV/VNAV NA below 15°C or above 54°C. When local altimeter setting not received, use X60 altimeter setting and increase LPV DA to 383 feet; increase LNAV/VNAV DA to 514 feet and all visibilities $\frac{1}{4}$ SM. Increase all MDAs 100 feet and LNAV visibility Cats C and D $\frac{1}{4}$ SM, and Circling visibility Cats C and D $\frac{1}{4}$ SM. Straight-in Rwy 31 NA at night, Circling Rwy 4, 13, 31 NA at night.

MISSED APPROACH:
Climb to 2000 direct
GRSSO and hold.

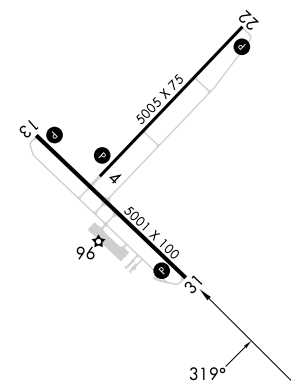
AWOS-3PT
120.775X60 AWOS-3T
118.425JACKSONVILLE CENTER
127.8 352.0UNICOM
122.8 (CTAF) 0

GRSSO 139° 4 NM

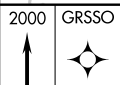


ELEV 42

TDZE 42



MIRL Rwy 13-31
MIRL Rwy 4-22 0
REIL Rwy 13 and 31 0



2000 GRSSO VGSI and RNAV glidepath not coincident
(VGSI Angle 3.00/TCH 36).

4 NM Holding Pattern
OKBIE
139° 6000
319° 2000
GP 3.00°
TCH 59

CATEGORY	A	B	C	D
LPV DA	292-1		250 (300-1)	
LNAV/VNAV DA	423-1 $\frac{1}{8}$		381 (400-1 $\frac{1}{8}$)	
LNAV MDA	500-1	458 (500-1)	500-1 $\frac{3}{8}$	458 (500-1 $\frac{3}{8}$)
CIRCLING	500-1 458 (500-1)	520-1 478 (500-1)	660-1 $\frac{3}{4}$ 618 (700-1 $\frac{3}{4}$)	660-2 618 (700-2)

CROSS CITY, FLORIDA

Amdt 2 17APR25

29°38'N-83°06'W

CROSS CITY (CTY)

RNAV (GPS) RWY 31

SE-3, 07 AUG 2025 to 04 SEP 2025

SE-3, 07 AUG 2025 to 04 SEP 2025