

COLORADO SPRINGS, COLORADO

AL-87 (FAA)

25163

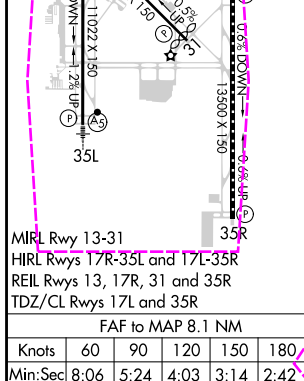
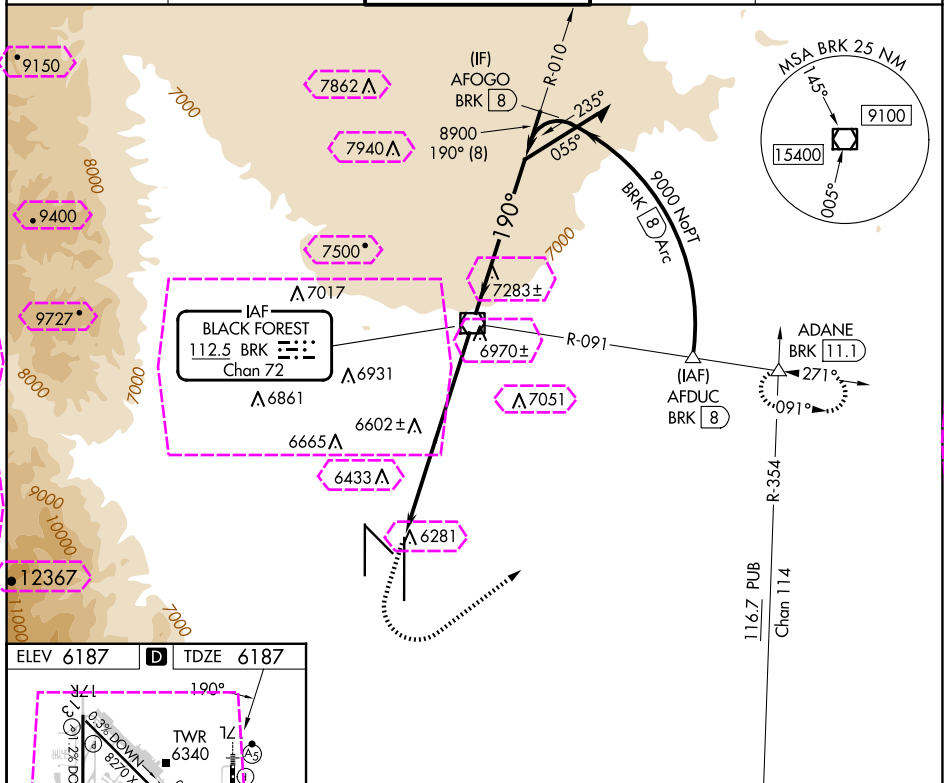
VOR/DME BRK	APP CRS	Rwy Ldg	13500
112.5	190°	TDZE	6187
Chan 72		Apt Elev	6187

# VOR RWY 17L

CITY OF COLORADO SPRINGS MUNI (COS)

DME and RADAR required for procedure entry at AFDUC.	MALSR	MISSED APPROACH: Climb to 7900 then climbing left turn to 9000 on heading 045° and BRK VOR/DME R-091 to ADANE INT/BRK VOR/DME 11.1 DME and hold.
Inop table does not apply.	AS	

ATIS	SPRINGS APP CON	SPRINGS TOWER	GND CON	CLNC DEL
125.0 254.3	124.0 257.875	119.9 360.6	121.7 348.6	134.45 363.125



7900	9000	BRK R-091	ADANE	
↑	hdg 045°		△	
VGSI and descent angles not coincident (VGSI Angle 3.00/TCH 57).				
BRK 8.1	BRK 4.4	BRK VOR/DME 9200	Remain within 10 NM	
3.7 NM		4.4 NM		
CATEGORY	A	B	C	D
S-17L	7440-1¼ 1253 (1300-1¼)	7440-1½ 1253 (1300-1½)	7440-3	1253 (1300-3)
<b>C</b> CIRCLING	7440-1¼ 1253 (1300-1¼)	7440-1½ 1253 (1300-1½)	7440-3	1253 (1300-3)

COLORADO SPRINGS, COLORADO

AL-87 (FAA)

25219

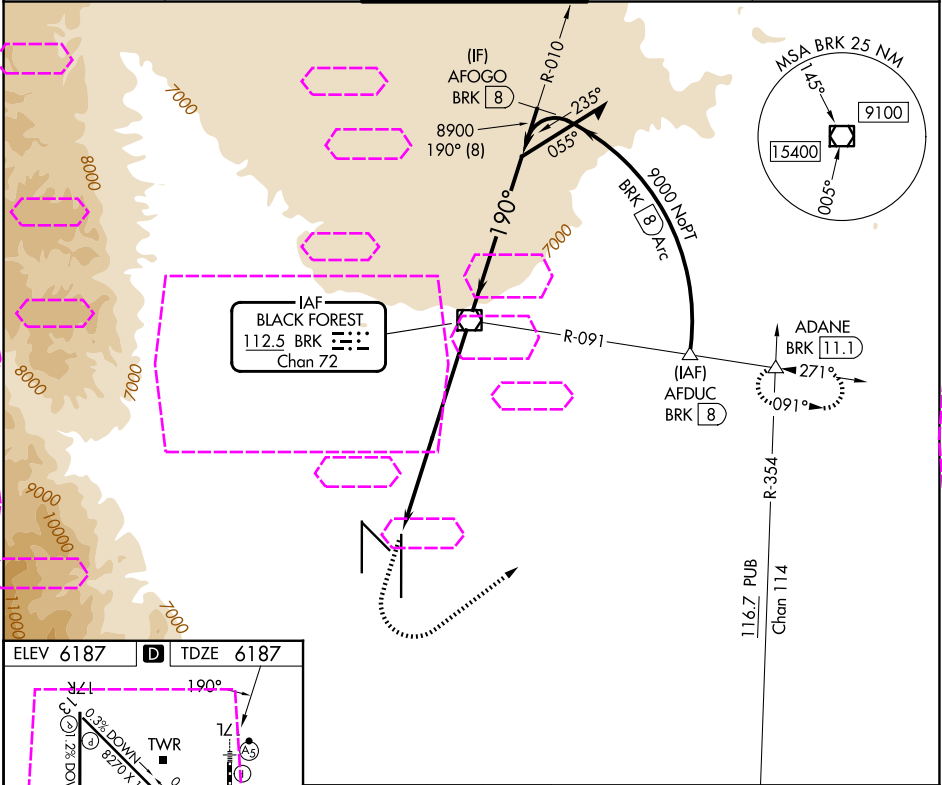
VOR/DME BRK	APP CRS	Rwy Ldg	13500
112.5	190°	TDZE	6187
Chan 72		Apt Elev	6187

# VOR RWY 17L

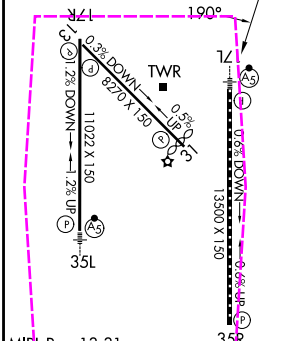
CITY OF COLORADO SPRINGS MUNI (COS)

DME and RADAR required for procedure entry at AFDUC.	MALSR	MISSED APPROACH: Climb to 7900 then climbing left turn to 9000 on heading 045° and BRK VOR/DME R-091 to ADANE INT/BRK VOR/DME 11.1 DME and hold.
Inop table does not apply.	AS	

ATIS	SPRINGS APP CON	SPRINGS TOWER	GND CON	CLNC DEL
125.0 254.3	124.0 257.875	119.9 360.6	121.7 348.6	134.45 363.125



ELEV 6187	TDZE 6187
-----------	-----------



MIRL Rwy 13-31  
HIRL Rwy 17R-35L and 17L-35R  
REIL Rwy 13, 17R, 31 and 35R  
TDZ/CL Rwy 17L and 35R  
FAF to MAP 8.1 NM

Knots	60	90	120	150	180
Min:Sec	8:06	5:24	4:03	3:14	2:42

7900	9000	BRK	ADANE	
hdg 045°	R-091	△		
VGSI and descent angles not coincident (VGSI Angle 3.00/TCH 57).				
BRK 8.1	BRK 4.4	BRK VOR/DME 9200	010°	Remain within 10 NM
3.7 NM	4.4 NM	9200	190°	8900
TCH 53				
CATEGORY	A	B	C	D
S-17L	7440-1¼ 1253 (1300-1¼)	7440-1½ 1253 (1300-1½)	7440-3	1253 (1300-3)
CIRCLING	7440-1¼ 1253 (1300-1¼)	7440-1½ 1253 (1300-1½)	7440-3	1253 (1300-3)

COLORADO SPRINGS, COLORADO

CITY OF COLORADO SPRINGS MUNI (COS)

Orig-A 20APR23

38°48'N-104°42'W

# VOR RWY 17L

SW-1, 07 AUG 2025 to 04 SEP 2025

SW-1, 07 AUG 2025 to 04 SEP 2025