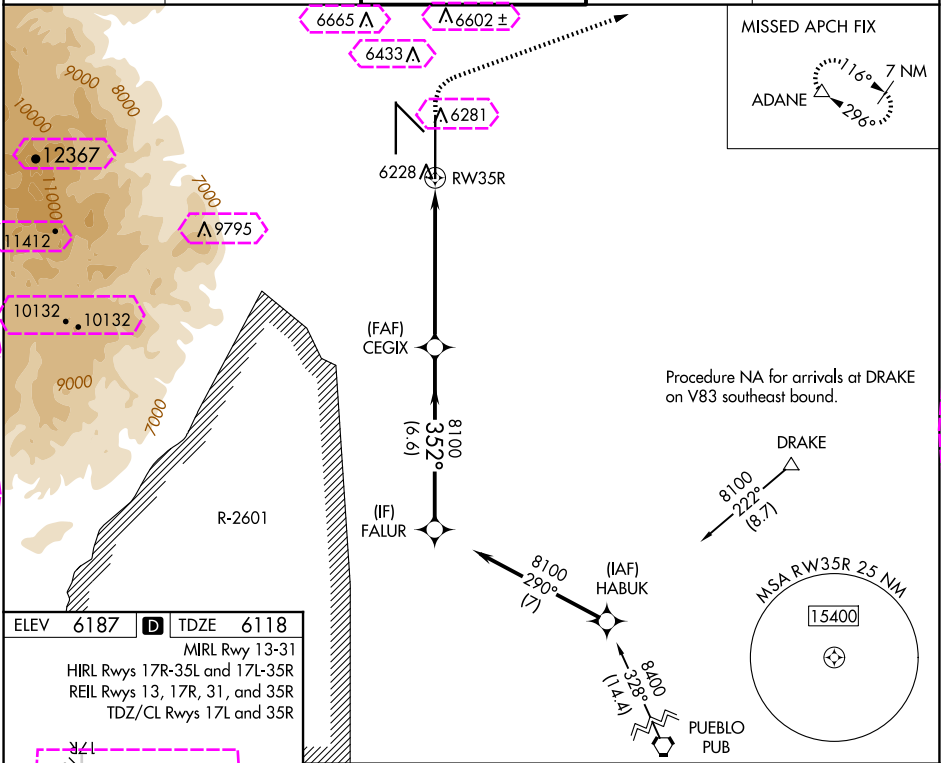


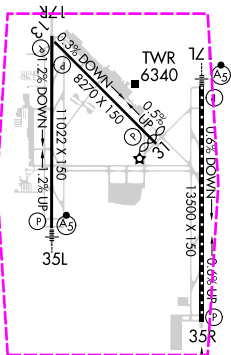
| | | |
|--|------------------------|--|
| WAAS CH 53602 W35B | APP CRS 352° | Rwy Ldg 13500 TDZE 6118 Apt Elev 6187 |
|--|------------------------|--|

RNAV (GPS) Y RWY 35R
CITY OF COLORADO SPRINGS MUNI (COS)

| | | | | | |
|-----------------------------------|---|----------------------------------|------------------------------|--|----------------------------|
| <div><div></div><div></div></div> | For uncompensated Baro-VNAV systems, LNAV/VNAV NA below -21°C (-5°F) or above 39°C (103°F). DME/DME RNP-0.3 NA. RADAR monitoring required when R-2601 in use. | | | MISSED APPROACH: Climb to 6600 then climbing right turn to 9000 direct ADANE and hold. | |
| | ATIS 125.0 254.3 | SPRINGS APP CON 124.0 257.875 | SPRINGS TOWER 119.9 360.6 | GND CON 121.7 348.6 | CLNC DEL 134.45 363.125 |



| | | | | |
|-------------------------------|------|----------|------|------|
| ELEV | 6187 | D | TDZE | 6118 |
| MIRL Rwy 13-31 | | | | |
| HIRL Rwy 17R-35L and 17L-35R | | | | |
| REIL Rwy 13, 17R, 31, and 35R | | | | |
| TDZ/CL Rwy 17L and 35R | | | | |



VGSI and RNAV glidepath not coincident
(VGSI Angle 3.00°/TCH 71°).

| CATEGORY | A | B | C | D |
|-----------------|-----------------------|-----------------------|-------------------------|-------------------------|
| LPV DA | 6318/40 | | 200 (200-¾) | |
| LNNAV/ VNAV | 6399/45 | | 281 (300-⅞) | |
| LNNAV MDA | 6500/55 | 382 (400-1) | 6500/60 | 382 (400-1¼) |
| CIRCUING | 6740-1 553 (600-1) | 6800-1 613 (700-1) | 7040-2½ 853 (900-2½) | 7260-3 1073 (1100-3) |

COLORADO SPRINGS, COLORADO

AL-87 (FAA)

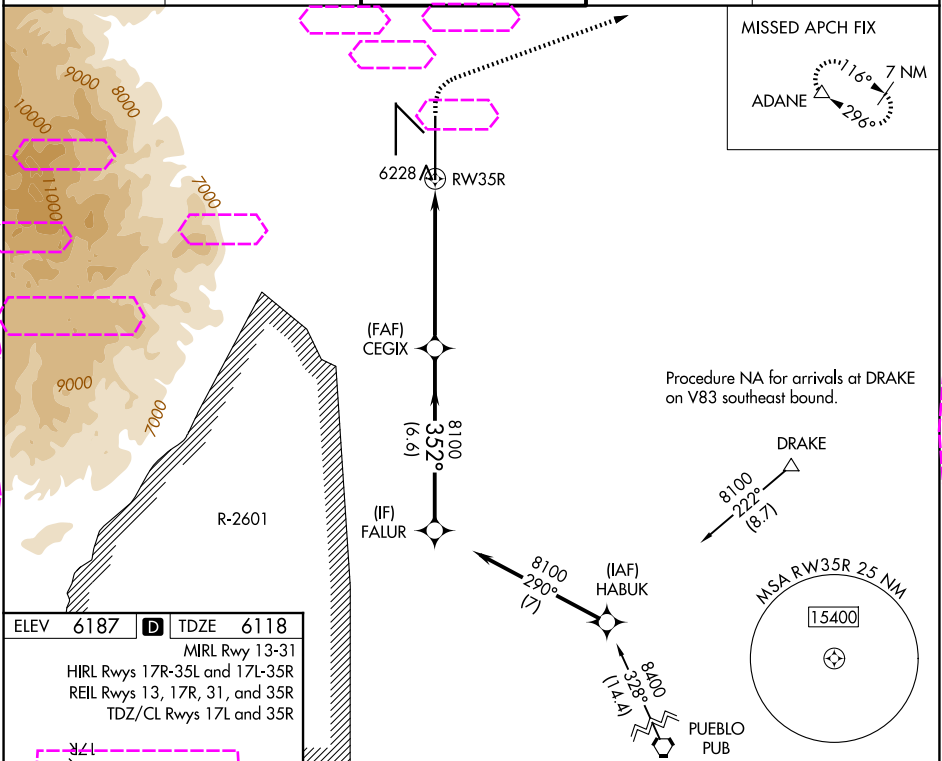
25219

| | | |
|--|------------------------|---|
| WAAS CH 53602 W35B | APP CRS 352° | Rwy Ldg TDZE 6118 Apt Elev 6187 |
|--|------------------------|---|

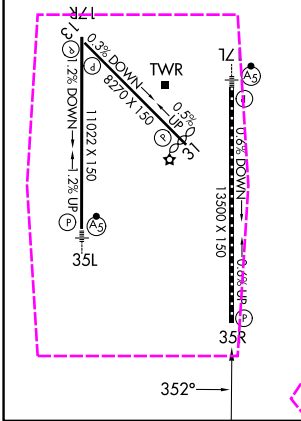
RNAV (GPS) Y RWY 35R

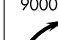
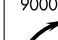
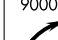
CITY OF COLORADO SPRINGS MUNI (COS)

| | | | | |
|--|--|------------------------------|------------------------|----------------------------|
| <div><div><div></div><div></div></div><div><div></div><div></div></div></div> <div>For uncompensated Baro-VNAV systems, LNAV/VNAV NA below -21°C (-5°F) or above 39°C (103°F). DME/DME RNP-0.3 NA. RADAR monitoring required when R-2601 in use.</div> | MISSED APPROACH: Climb to 6600 then climbing right turn to 9000 direct ADANE and hold. | | | |
| ATIS 125.0 254.3 | SPRINGS APP CON 124.0 257.875 | SPRINGS TOWER 119.9 360.6 | GND CON 121.7 348.6 | CLNC DEL 134.45 363.125 |



| | |
|-------------------------------|------------------|
| ELEV 6187 | TDZE 6118 |
| MIRL Rwy 13-31 | |
| HIRL Rwy 17R-35L and 17L-35R | |
| REIL Rwy 13, 17R, 31, and 35R | |
| TDZ/CL Rwy 17L and 35R | |



| | | | | | | |
|---|-----------------------|-----------------------|-------------------------|--|--|---|
| VGSI and RNAV glidepath not coincident (VGSI Angle 3.00/TCH 71). | | | | <div><div>6600</div><div>↑</div></div> | <div><div>9000</div><div></div></div> | <div><div>ADANE</div><div>△</div></div> |
| <div><div>FALUR</div><div>8100</div><div>352°</div><div>8100</div><div>CEGIX</div><div>8100</div><div>GP 3.00° TCH 55</div></div> | | | | <div><div>*1 NM to RW35R</div><div></div></div> | <div><div>*LNAV only</div><div></div></div> | |
| <div><div>6.6 NM</div><div>5.1 NM</div><div>1 NM</div></div> | | | | | | |
| CATEGORY | A | | B | C | D | |
| LPV DA | 6318/40 | | 200 (200-¾) | | | |
| LNAV/ VNAV DA | 6399/45 | | 281 (300-⅞) | | | |
| LNAV MDA | 6500/55 | 382 (400-1) | 6500/60 | 382 (400-1¼) | | |
| CIRCLING | 6740-1 553 (600-1) | 6800-1 613 (700-1) | 7040-2½ 853 (900-2½) | 7260-3 1073 (1100-3) | | |

COLORADO SPRINGS, COLORADO
Amdt 4A 17AUG17

CITY OF COLORADO SPRINGS MUNI (COS)
38°48'N-104°42'W
RNAV (GPS) Y RWY 35R

SW-1, 07 AUG 2025 to 04 SEP 2025

SW-1, 07 AUG 2025 to 04 SEP 2025