

WAAS CH 49112 W35A	APP CRS 352°	Rwy Ldg 11022 TDZE 6075 Apt Elev 6187
--	------------------------	--

RNAV (GPS) Y RWY 35L
CITY OF COLORADO SPRINGS MUNI (COS)

T For uncompensated Baro-VNAV systems, LNAV/VNAV NA below -21°C (-5°F) or above 54°C (130°F). DME/DME RNP: 0.3 NA. For inop MALSR increase LNAV Cat C and D visibility to RVR 5500. RADAR monitoring required when R-2601 in use.

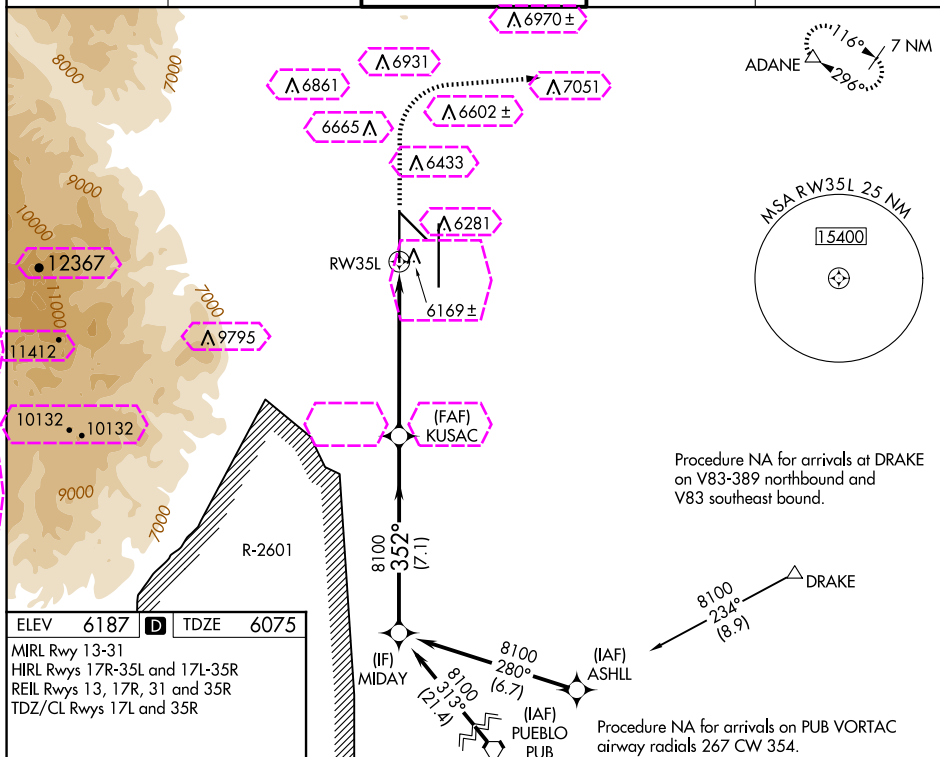
A # RVR 1800 authorized with use of FD or AP or HUD to DA.

MALSR



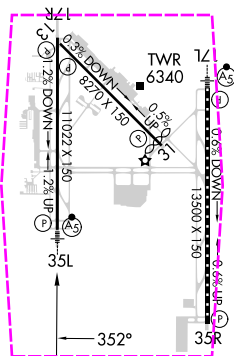
MISSED APPROACH:
Climb to 6700 then climbing
right turn to 9000 direct
ADANE and hold.

ATIS 125.0 254.3	SPRINGS APP CON 124.0 257.875	SPRINGS TOWER 119.9 360.6	GND CON 121.7 348.6	CLNC DEL 134.45 363.125
---------------------	----------------------------------	------------------------------	------------------------	----------------------------



ELEV	6187	D	TDZE	6075
------	------	----------	------	------

MIRL Rwy 13-31
HIRL Rws 17R-35L and 17L-35R
REIL Rws 13, 17R, 31 and 35R
TDZ/CL Rws 17L and 35R



VGS1 and RNAV glidepath not coincident (VGS1 Angle 3.00/TCH 72°).

MIDAY

8100

352°

KUŞAC 8100

8100

GP 3.00° TCH 55°

7.1 NM

5.3 NM

1 NM

RW35L

*1 NM to RW35L

*LNAV only

6700

9000

ADANE

△

COLORADO SPRINGS, COLORADO

AL-87 (FAA)

25219

WAAS CH 49112 W35A	APP CRS 352°	Rwy Ldg TDZE 6075 Apt Elev 6187
--	------------------------	---

RNAV (GPS) Y RWY 35L

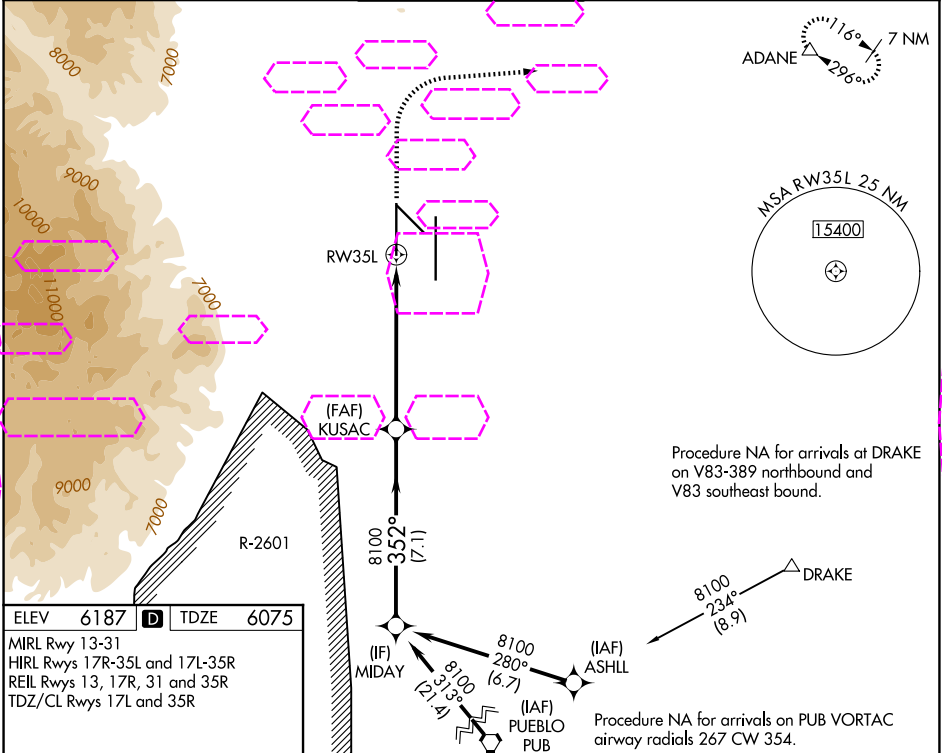
CITY OF COLORADO SPRINGS MUNI (COS)

⚠ For uncompensated Baro-VNAV systems, LNAV/VNAV NA below -21°C (-5°F) or above 54°C (130°F). DME/DME RNP- 0.3 NA. For inop MALSR increase LNAV Cat C and D visibility to RVR 5500. RADAR monitoring required when R-2601 in use. # RVR 1800 authorized with use of FD or AP or HUD to DA.

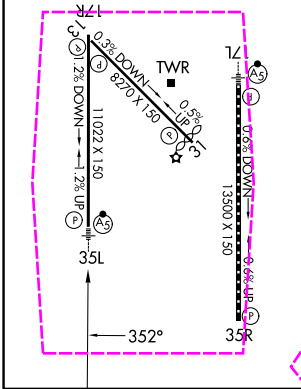
MALSR

MISSED APPROACH:
Climb to 6700 then climbing right turn to 9000 direct ADANE and hold.

ATIS 125.0 254.3	SPRINGS APP CON 124.0 257.875	SPRINGS TOWER 119.9 360.6	GND CON 121.7 348.6	CLNC DEL 134.45 363.125
----------------------------	---	-------------------------------------	-------------------------------	-----------------------------------



ELEV 6187	D	TDZE 6075
MIRL Rwy 13-31 HIRL Rwy 17R-35L and 17L-35R REIL Rwy 13, 17R, 31 and 35R TDZ/CL Rwy 17L and 35R		



VGSI and RNAV glidepath not coincident (VGSI Angle 3.00/TCH 72).				<div>6700 ↑</div> <div>9000 ↗</div> <div>ADANE △</div>		
<div>GP 3.00° TCH 55</div> <div>8100 — 352° — 8100</div> <div>7.1 NM — 5.3 NM — 1 NM</div> <div>KUSAC 8100</div> <div>RW35L</div> <div>*1 NM to RW35L</div> <div>*LNAV only</div>						
CATEGORY	A		B		C	D
LPV DA #	6275/24		200 (100-½)			
LNAV/VNAV DA	6380/30		305 (200-⅝)			
LNAV MDA	6440/24 365 (300-½)		6440/35 365 (300-⅝)			
CIRCLING	6740-1 553 (600-1)	6800-1 613 (700-1)	7040-2½ 853 (900-2½)	7260-3 1073 (1100-3)		

COLORADO SPRINGS, COLORADO

CITY OF COLORADO SPRINGS MUNI (COS)

Amdt 1B 26APR18

38°48'N-104°42'W

RNAV (GPS) Y RWY 35L

SW-1, 07 AUG 2025 to 04 SEP 2025

SW-1, 07 AUG 2025 to 04 SEP 2025