

COLORADO SPRINGS, COLORADO

AL-87 (FAA)

25163

WAAS CH 72800 W17B	APP CRS 172°	Rwy Ldg TDZE 6177 Apt Elev 6187
--	------------------------	---

RNAV (GPS) Y RWY 17R

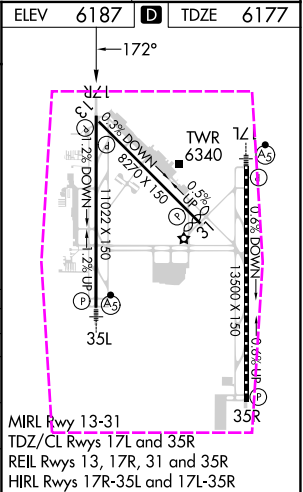
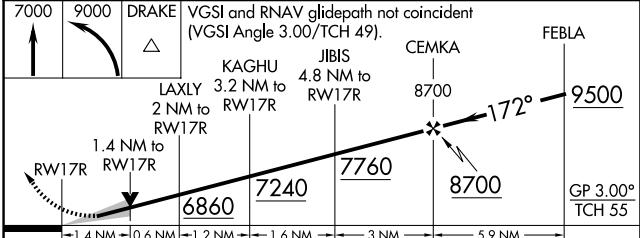
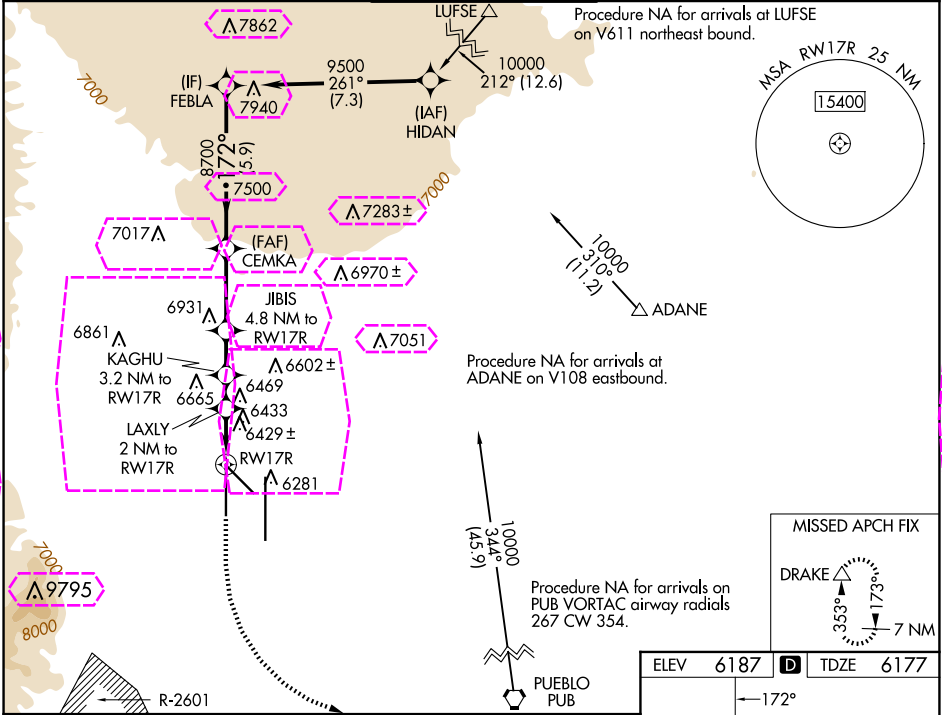
CITY OF COLORADO SPRINGS MUNI (COS)

RNP APCH - GPS.

For uncompensated Baro-VNAV systems, LNAV/VNAV NA below -21°C or above 54°C.
Simultaneous approach authorized with ILS or LOC RWY 17L and ILS RWY 17L (SA CAT I).
LNAV procedure NA during simultaneous operations. Use of FD or AP providing RNAV track guidance required during simultaneous operations.

MISSED APPROACH: Climb to 7000 then climbing left turn to 9000 direct DRAKE and hold.

ATIS 125.0 254.3	SPRINGS APP CON 124.0 257.875	SPRINGS TOWER 119.9 360.6	GND CON 121.7 348.6	CLNC DEL 134.45 363.125
----------------------------	---	-------------------------------------	-------------------------------	-----------------------------------



CATEGORY	A	B	C	D
LPV DA	6377/40 200 (200-¾)			
LNAV/VNAV DA	6752-2 575 (600-2)			
LNAV MDA	6680/55	503 (500-1)	6680-1⅓	503 (500-1⅓)
CIRCLING	6740-1 553 (600-1)	6800-1 613 (700-1)	7040-2½ 853 (900-2½)	7260-3 1073 (1100-3)

COLORADO SPRINGS, COLORADO

AL-87 (FAA)

25219

WAAS CH 72800 W17B	APP CRS 172°	Rwy Ldg TDZE 6177 Apt Elev 6187
--	------------------------	---

RNAV (GPS) Y RWY 17R

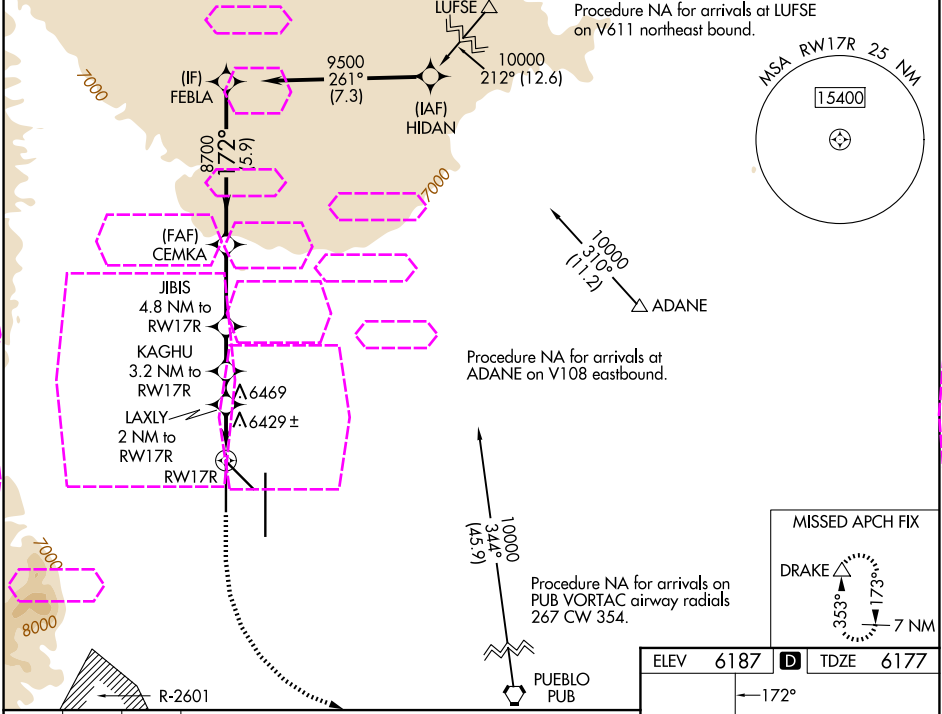
CITY OF COLORADO SPRINGS MUNI (COS)

RNP APCH - GPS.

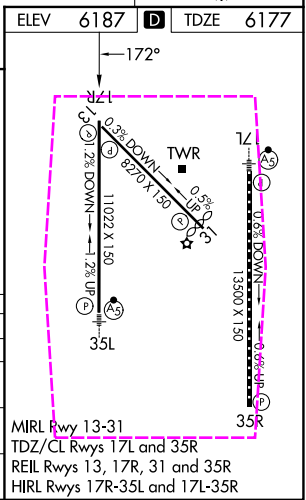
For uncompensated Baro-VNAV systems, LNAV/VNAV NA below -21°C or above 54°C.
Simultaneous approach authorized with ILS or LOC RWY 17L and ILS RWY 17L (SA CAT I).
LNAV procedure NA during simultaneous operations. Use of FD or AP providing RNAV track guidance required during simultaneous operations.

MISSED APPROACH: Climb to 7000 then climbing left turn to 9000 direct DRAKE and hold.

ATIS 125.0 254.3	SPRINGS APP CON 124.0 257.875	SPRINGS TOWER 119.9 360.6	GND CON 121.7 348.6	CLNC DEL 134.45 363.125
----------------------------	---	-------------------------------------	-------------------------------	-----------------------------------



CATEGORY		A	B	C	D
LPV	DA	6377/40 200 (200-¾)			
LNAV/VNAV	DA	6752-2 575 (600-2)			
LNAV	MDA	6680/55	503 (500-1)	6680-1⅓	503 (500-1⅓)
CIRCLING		6740-1 553 (600-1)	6800-1 613 (700-1)	7040-2½ 853 (900-2½)	7260-3 1073 (1100-3)



COLORADO SPRINGS, COLORADO

Amdt 3B 20APR23

CITY OF COLORADO SPRINGS MUNI (COS)

38°48'N-104°42'W

RNAV (GPS) Y RWY 17R

SW-1, 07 AUG 2025 to 04 SEP 2025

SW-1, 07 AUG 2025 to 04 SEP 2025