

COLORADO SPRINGS, COLORADO

AL-87 (FAA)

25163

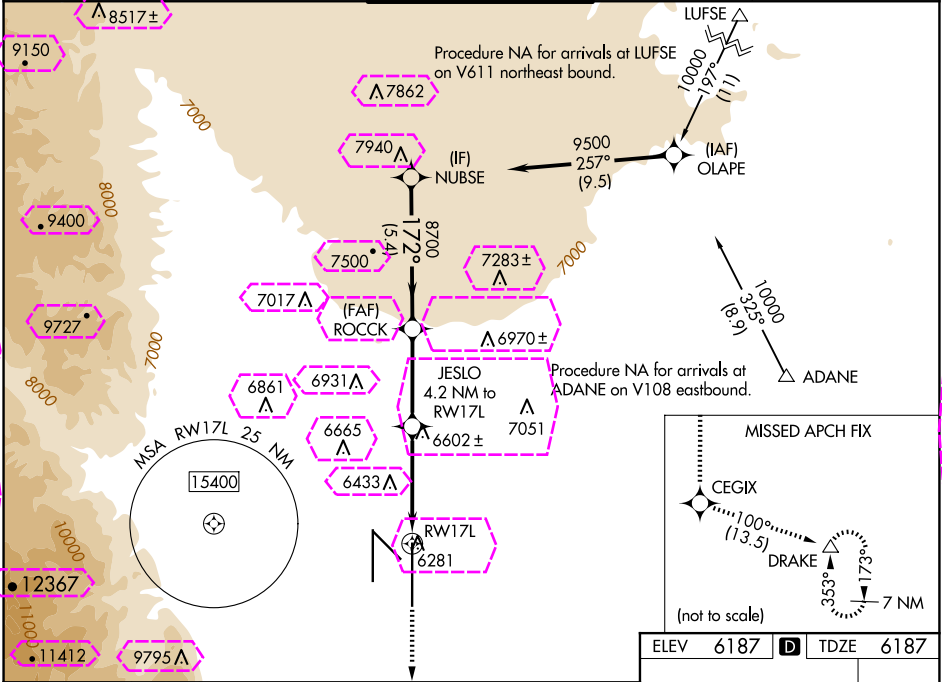
WAAS CH 69618 W17A	APP CRS 172°	Rwy Ldg TDZE 6187 Apt Elev 6187
--	------------------------	---

RNAV (GPS) Y RWY 17L

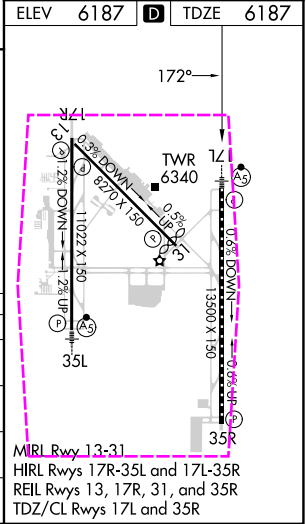
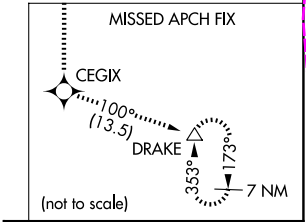
CITY OF COLORADO SPRINGS MUNI (COS)

RNP APCH - GPS. ▼ For uncompensated Baro-VNAV systems, LNAV/VNAV NA below -21°C or above 44°C. For inop MALSR, increase LNAV Cat C/D visibility to 2½ SM. ▲	MALSR A5	MISSED APPROACH: Climb to 9000 direct CEGIX and on track 100° to DRAKE and hold.
---	-------------	--

ATIS 125.0 254.3	SPRINGS APP CON 124.0 257.875	SPRINGS TOWER 119.9 360.6	GND CON 121.7 348.6	CLNC DEL 134.45 363.125
----------------------------	---	-------------------------------------	-------------------------------	-----------------------------------



9000 ↑	CEGIX ✱	tr 100°	DRAKE △				
RW17L				JESLO 4.2 NM to RW17L	ROCCK 8700	NUBSE 9500	
2.4 NM to RW17L				7580	172°	8700	GP 3.00° TCH 57
2.4 NM				1.8 NM	3.5 NM	5.4 NM	
CATEGORY		A	B	C	D		
LPV	DA	6387/18		200 (200-½)			
LNAV/ VNAV	DA	6602/45		415 (500-¾)			
LNAV	MDA	7000/24 813 (900-½)	7000/40 813 (900-¾)	7000-17⁄8	813 (900-17⁄8)		
CIRCLING		7000-1¼	813 (900-1¼)	7040-2 ½ 853 (900-2 ½)	7260-3 1073 (1100-3)		



COLORADO SPRINGS, COLORADO
Amdt 3C 20APR23

CITY OF COLORADO SPRINGS MUNI (COS)
38°48'N-104°42'W
RNAV (GPS) Y RWY 17L

COLORADO SPRINGS, COLORADO


AL-87 (FAA)

25219

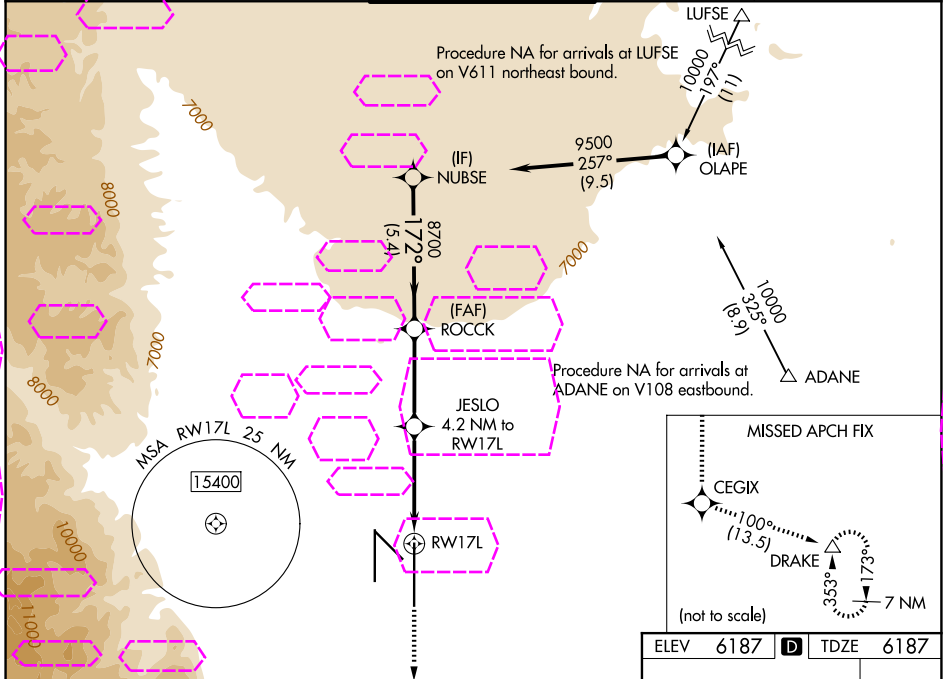
WAAS CH 69618 W17A	APP CRS 172°	Rwy Ldg 13500 TDZE 6187 Apt Elev 6187
--	------------------------	--


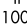

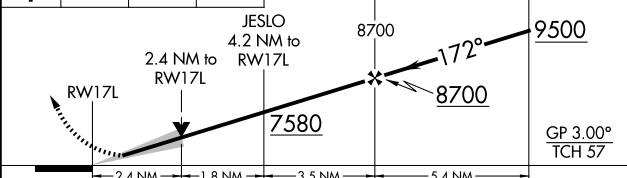
RNAV (GPS) Y RWY 17L

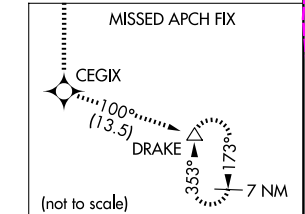
CITY OF COLORADO SPRINGS MUNI (COS)

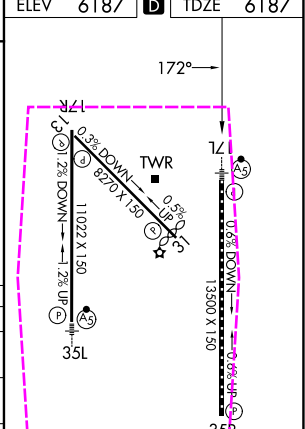
RNP APCH - GPS. ▼ For uncompensated Baro-VNAV systems, LNAV/VNAV NA below -21°C or above 44°C. For inop MALSR, increase LNAV Cat C/D visibility to 2½ SM. ▲	MALSR 	MISSED APPROACH: Climb to 9000 direct CEGIX and on track 100° to DRAKE and hold.
---	--	--

ATIS 125.0 254.3	SPRINGS APP CON 124.0 257.875	SPRINGS TOWER 119.9 360.6	GND CON 121.7 348.6	CLNC DEL 134.45 363.125
----------------------------	---	-------------------------------------	-------------------------------	-----------------------------------



9000 ↑	CEGIX 	tr 100° 	DRAKE 					
CATEGORY		A	B	C	D			
LPV	DA	6387/18		200 (200-½)				
LNAV/ VNAV	DA	6602/45		415 (500-¾)				
LNAV	MDA	7000/24 813 (900-½)	7000/40 813 (900-¾)	7000-1⅞	813 (900-1⅞)			
CIRCLING		7000-1¼	813 (900-1¼)	7040-2 ½ 853 (900-2 ½)	7260-3 1073 (1100-3)			



ELEV 6187	TDZE 6187
	
MIRL Rwy 13-31 HIRL Rwy 17R-35L and 17L-35R REIL Rwy 13, 17R, 31, and 35R TDZ/CL Rwy 17L and 35R	

COLORADO SPRINGS, COLORADO
Amdt 3C 20APR23

CITY OF COLORADO SPRINGS MUNI (COS)
38°48'N-104°42'W
RNAV (GPS) Y RWY 17L

SW-1, 07 AUG 2025 to 04 SEP 2025

SW-1, 07 AUG 2025 to 04 SEP 2025