

COLORADO SPRINGS, COLORADO

AL-87 (FAA)

25163

APP CRS	Rwy Ldg	13500
352°	TDZE	6118
	Apt Elev	6187

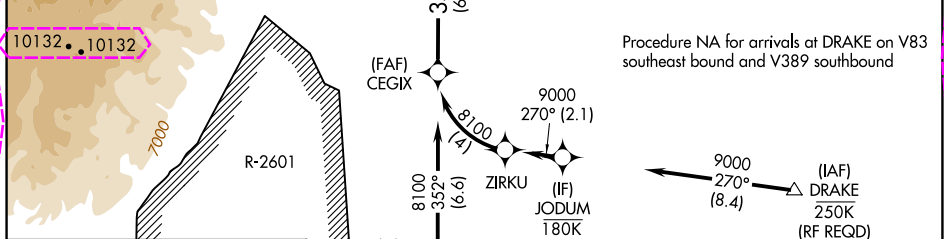
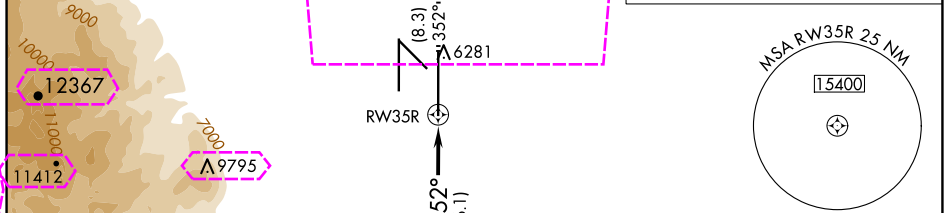
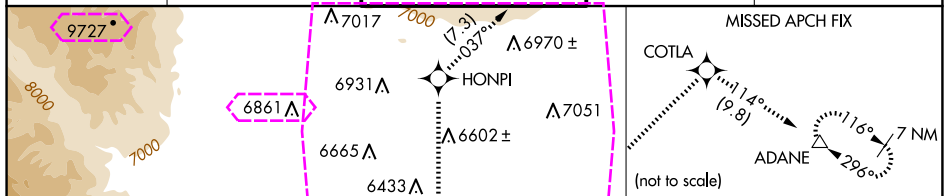
RNAV (RNP) Z RWY 35R

CITY OF COLORADO SPRINGS MUNI (COS)

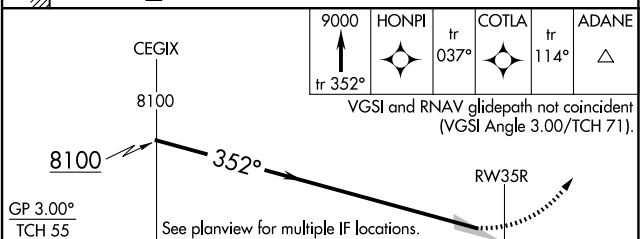
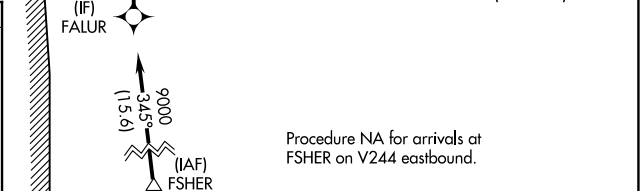
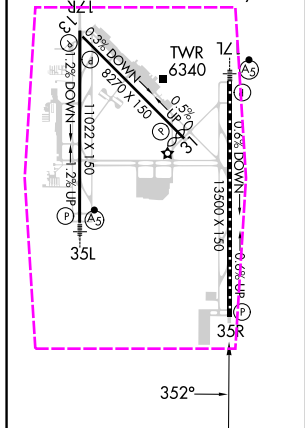
For uncompensated Baro-VNAV systems, procedure NA below -21°C (-5°F) or above 45°C (113°F). GPS required.

MISSED APPROACH: Climb to 9000 on track 352° to HONPI and track 037° to COTLA and track 114° to ADANE and hold.

ATIS	SPRINGS APP CON	SPRINGS TOWER	GND CON	CLNC DEL
125.0 254.3	124.0 257.875	119.9 360.6	121.7 348.6	134.45 363.125



ELEV	6187	TDZE	6118
HIRL Rwy 17R-35L and 17L-35R			
REIL Rwy 13, 17R, 31, and 35R			
TDZ/CL Rwy 17L and 35R			
MIRL Rwy 13-31			



CATEGORY	A	B	C	D
RNP 0.30 DA	6461/60	343 (300-1¼)		

AUTHORIZATION REQUIRED

COLORADO SPRINGS, COLORADO
Amdt 1A 17AUG17

CITY OF COLORADO SPRINGS MUNI (COS)
38°48'N-104°42'W
RNAV (RNP) Z RWY 35R

SW-1, 10 JUL 2025 to 07 AUG 2025

SW-1, 10 JUL 2025 to 07 AUG 2025

COLORADO SPRINGS, COLORADO

AL-87 (FAA)

25219

APP CRS	Rwy Ldg	13500
352°	TDZE	6118
	Apt Elev	6187

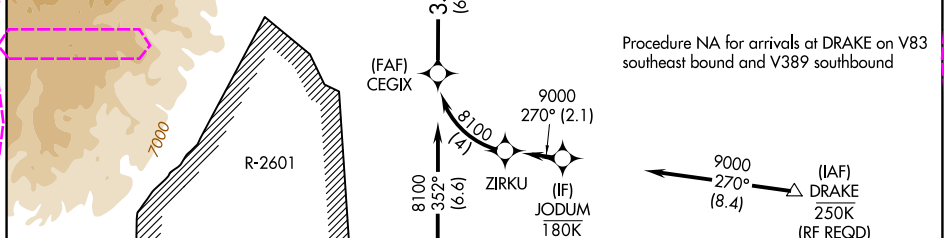
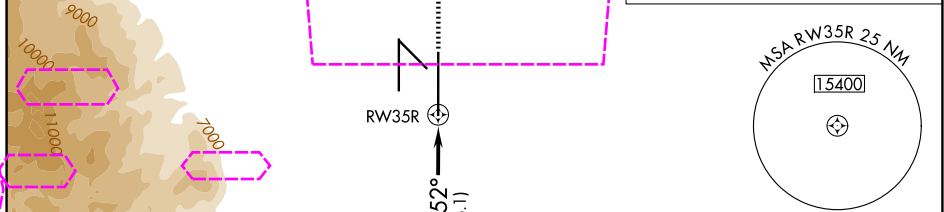
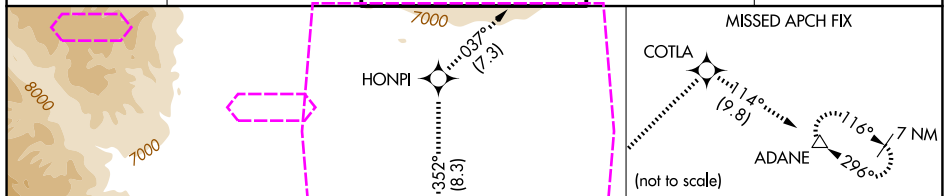
RNAV (RNP) Z RWY 35R

CITY OF COLORADO SPRINGS MUNI (COS)

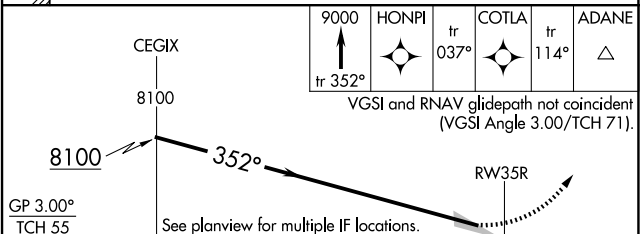
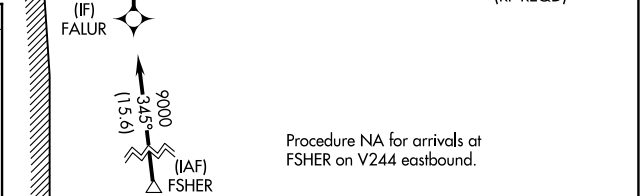
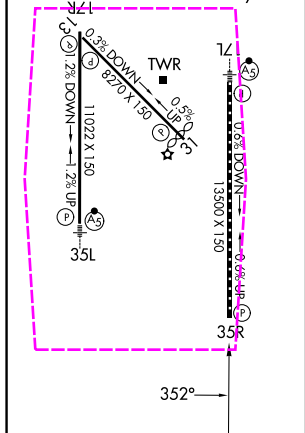
For uncompensated Baro-VNAV systems, procedure NA below -21°C (-5°F) or above 45°C (113°F). GPS required.

MISSED APPROACH: Climb to 9000 on track 352° to HONPI and track 037° to COTLA and track 114° to ADANE and hold.

ATIS	SPRINGS APP CON	SPRINGS TOWER	GND CON	CLNC DEL
125.0 254.3	124.0 257.875	119.9 360.6	121.7 348.6	134.45 363.125



ELEV	6187	TDZE	6118
HIRL Rwy 17R-35L and 17L-35R			
REIL Rwy 13, 17R, 31, and 35R			
TDZ/CL Rwy 17L and 35R			
MIRL Rwy 13-31			



CATEGORY	A	B	C	D
RNP 0.30 DA	6461/60	343 (300-1¼)		

AUTHORIZATION REQUIRED

COLORADO SPRINGS, COLORADO
Amdt 1A 17AUG17

CITY OF COLORADO SPRINGS MUNI (COS)
38°48'N-104°42'W
RNAV (RNP) Z RWY 35R