

COLORADO SPRINGS, COLORADO

AL-87 (FAA)

25163

APP CRS	Rwy Ldg	11022
352°	TDZE	6075
	Apt Elev	6187

# RNAV (RNP) Z RWY 35L

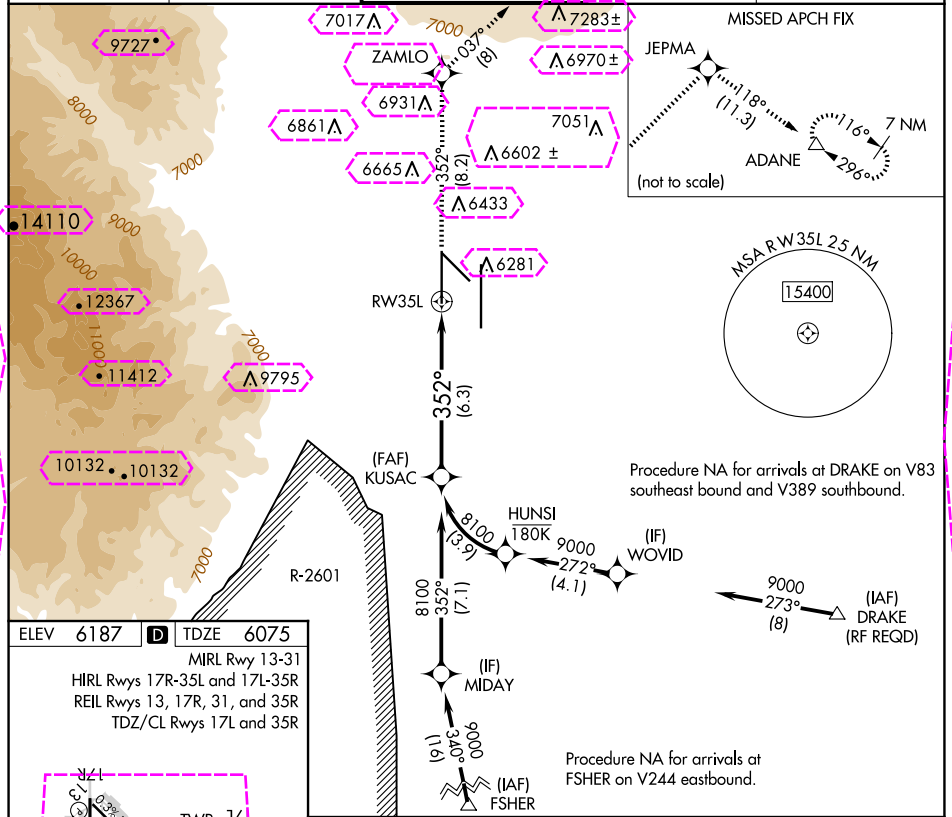
CITY OF COLORADO SPRINGS MUNI (COS)

For uncompensated Baro-VNAV systems, procedure NA below -21°C (-5°F) or above 45°C (113°F). GPS required. For inop MALS increase RNP 0.15 visibility all Cats to RVR 5000. RADAR monitoring required when R-2601 in use.

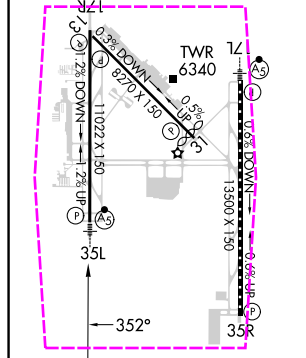
MALS

MISSED APPROACH: Climb to 9000 on track 352° to ZAMLO and on track 037° to JEPMA and on track 118° to ADANE and hold.

ATIS 125.0 254.3	SPRINGS APP CON 124.0 257.875	SPRINGS TOWER 119.9 360.6	GND CON 121.7 348.6	CLNC DEL 134.45 363.125
---------------------	----------------------------------	------------------------------	------------------------	----------------------------



ELEV 6187	TDZE 6075
MIRL Rwy 13-31	
HIRL Rwy 17R-35L and 17L-35R	
REIL Rwy 13, 17R, 31, and 35R	
TDZ/CL Rwy 17L and 35R	



See planview for multiple IF locations.	9000	ZAMLO	tr 037°	JEPMA	tr 118°	ADANE
KUSAC	8100					
8100	352°					
GP 3.00°	TCH 55					
CATEGORY	A	B	C	D		
RNP 0.15 DA		6372/30	297 (200-5%)			
RNP 0.30 DA		6427/40	352 (300-34)			

AUTHORIZATION REQUIRED

COLORADO SPRINGS, COLORADO  
Amdt 1A 17AUG17

CITY OF COLORADO SPRINGS MUNI (COS)  
38°48'N-104°42'W  
RNAV (RNP) Z RWY 35L

SW-1, 10 JUL 2025 to 07 AUG 2025

SW-1, 10 JUL 2025 to 07 AUG 2025

APP CRS	Rwy Ldg	<b>11022</b>
<b>352°</b>	TDZE	<b>6075</b>
	Apt Elev	<b>6187</b>

RNAV (RNP) Z RWY 35L  
CITY OF COLORADO SPRINGS MUNI (COS)

**T** For uncompensated Baro-VNAV systems, procedure NA below -21°C (-5°F) or above 45°C (113°F). GPS required. For inop MALSR increase RNP 0.15 visibility all Cats to RVR 5000. RADAR monitoring required when R-2601 in use.

MALSR

**MISSED APPROACH:** Climb to 9000 on track 352° to ZAMLO and on track 037° to JEPMA and on track 118° to ADANE and hold.

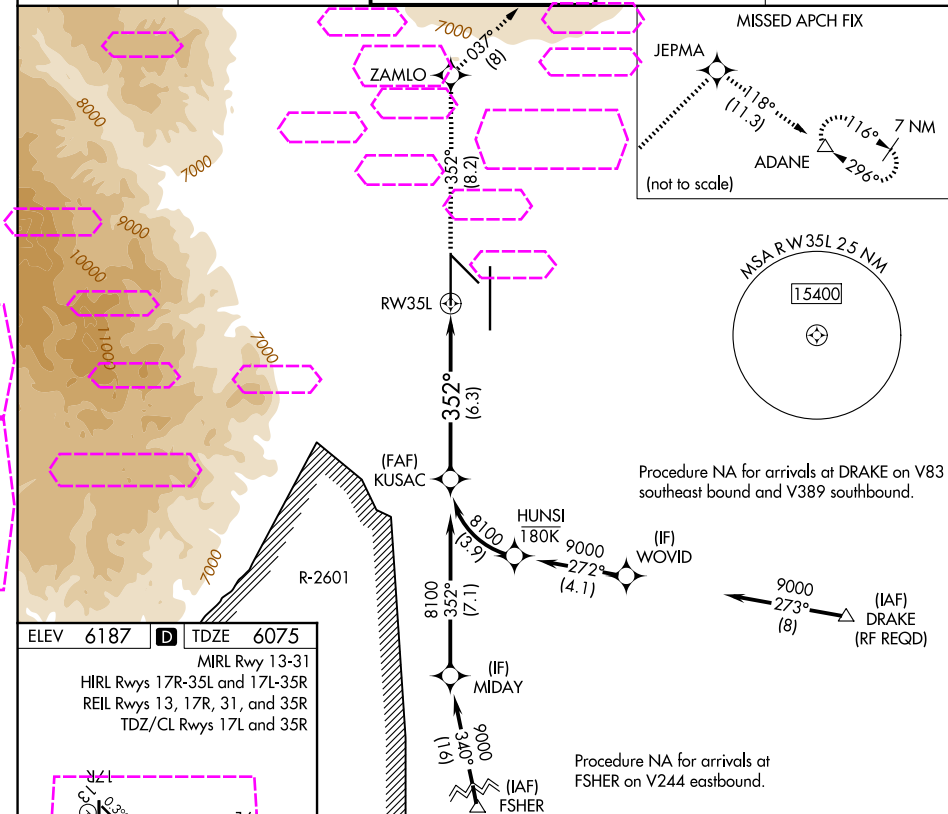
ATIS  
125.0 254.3

SPRINGS APP CON  
124.0 257.875

SPRINGS TOWER  
119.9 360.6

GND CON  
121.7 348.6

CLNC DEL  
134.45 363.125



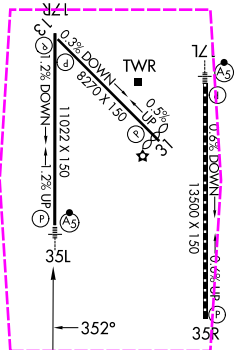
ELEV	6187	<b>D</b>	TDZE	6075
------	------	----------	------	------

MIRI Rwy 13-31

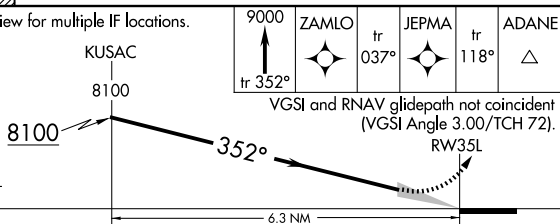
HIRL Rwys 17R-35L and 17L-35R

REIL Rwys 13, 17R, 31, and 35R

TDZ/CL Rwy 17L and 35R



See planview for multiple IF locations.



CATEGORY	A	B	C	D
RNP 0.15 DA		6372/30	297 (200 <sup>-5/8</sup> )	
RNP 0.30 DA		6427/40	352 (300 <sup>-3/4</sup> )	

**AUTHORIZATION REQUIRED**

COLORADO SPRINGS, COLORADO

Amdt 1A 17AUG17

CITY OF COLORADO SPRINGS MUNI (COS)

38°48'N-104°42'W

RNAV (RNP) Z RWY 35L

SW-1, 07 AUG 2025 to 04 SEP 2025