

COLORADO SPRINGS, COLORADO

AL-87 (FAA)

25163

APP CRS	Rwy Ldg	11022
172°	TDZE	6177
	Apt Elev	6187

RNAV (RNP) Z RWY 17R

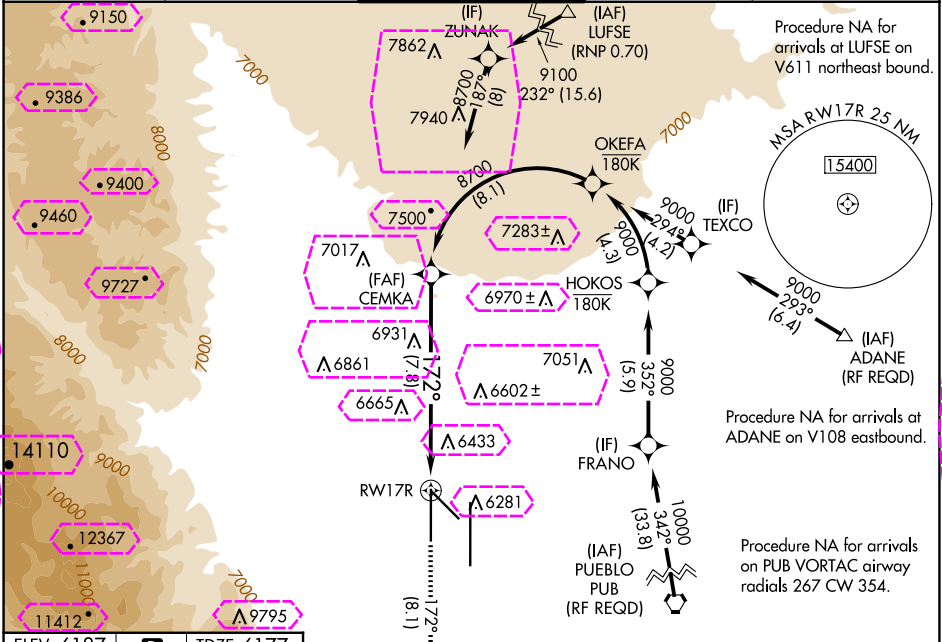
CITY OF COLORADO SPRINGS MUNI (COS)

RNP AR APCH - GPS.

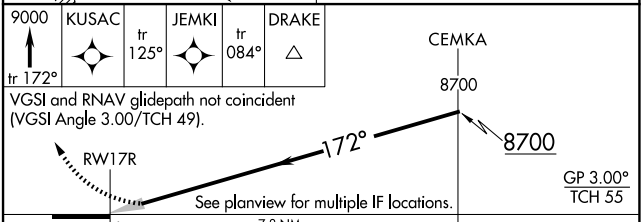
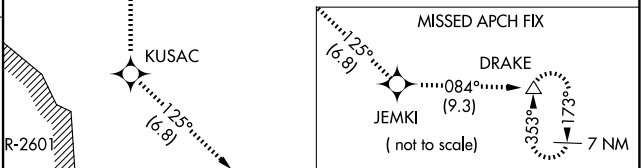
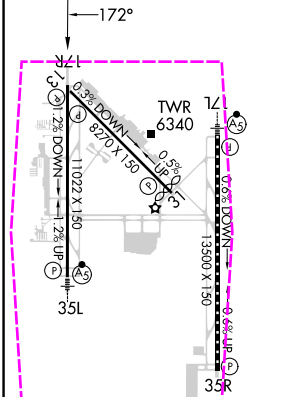
▼ For uncompensated Baro-VNAV systems, procedure NA below -21°C or above 45°C. Simultaneous approach authorized.

MISSED APPROACH: Climb to 9000 on track 172° to KUSAC and on track 125° to JEMKI and on track 084° to DRAKE and hold.

ATIS	SPRINGS APP CON	SPRINGS TOWER	GND CON	CLNC DEL
125.0 254.3	124.0 257.875	119.9 360.6	121.7 348.6	134.45 363.125



ELEV 6187 TDZE 6177



CATEGORY	A	B	C	D
RNP 0.22 DA	6659-1½	482 (500-1½)		
RNP 0.30 DA	6902-2½	725 (800-2½)		

AUTHORIZATION REQUIRED

COLORADO SPRINGS, COLORADO

CITY OF COLORADO SPRINGS MUNI (COS)

Amdt 1B 20APR23

38°48'N-104°42'W

RNAV (RNP) Z RWY 17R

RNAV (RNP) Z RWY 17R