

COLORADO SPRINGS, COLORADO

AL-87 (FAA)

25163

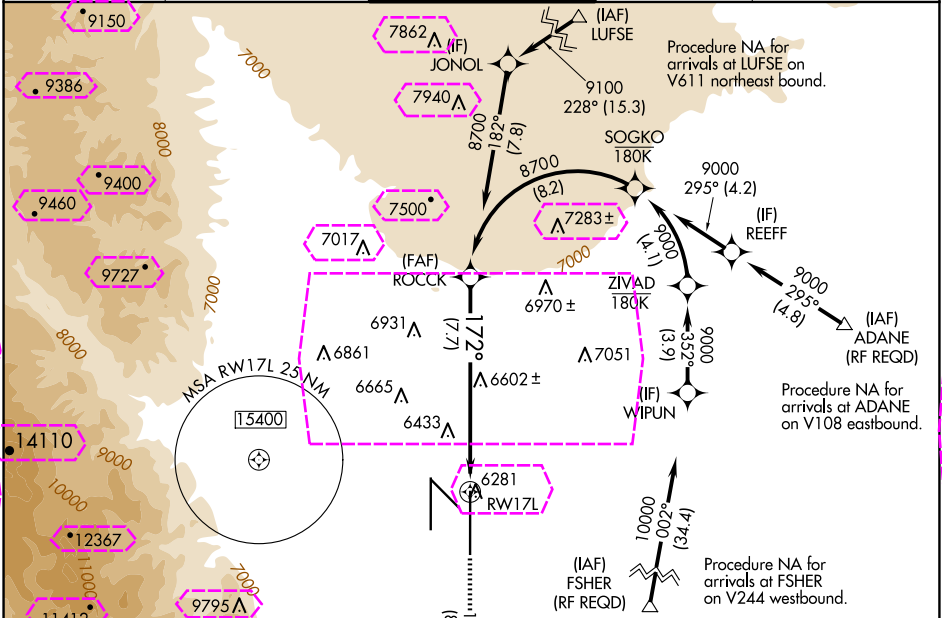
APP CRS	Rwy Ldg	13500
172°	TDZE	6187
	Apt Elev	6187

RNAV (RNP) Z RWY 17L

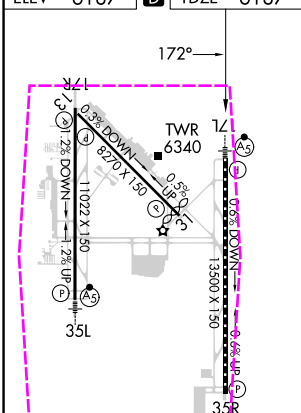
CITY OF COLORADO SPRINGS MUNI (COS)

RNP AR APCH - GPS.	MALSR	MISSED APPROACH: Climb to 9000 on track 172° to CEGIX and on track 130° to JEMKI and on track 084° to DRAKE and hold.
For uncompensated Baro-VNAV systems, procedure NA below -21°C or above 44°C.		

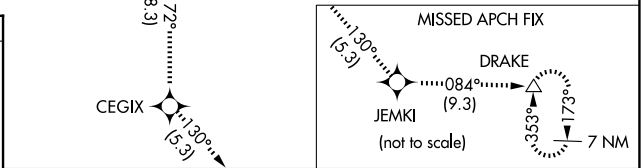
ATIS	SPRINGS APP CON	SPRINGS TOWER	GND CON	CLNC DEL
125.0 254.3	124.0 257.875	119.9 360.6	121.7 348.6	134.45 363.125



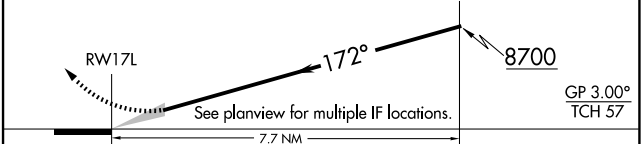
ELEV	6187	TDZE	6187
------	------	------	------



MRL Rwy 13-31
HIRL Rws 17R-35L and 17L-35R
REIL Rws 13, 17R, 31 and 35R
TDZ/CL Rws 17L and 35R



9000	CEGIX	JEMKI	DRAKE
tr 172°	tr 130°	tr 084°	



CATEGORY	A	B	C	D
RNP 0.15 DA		6557/40	370 (400-3/4)	
RNP 0.25 DA		6644/50	457 (500-1)	
RNP 0.30 DA		6920-2	733 (800-2)	

AUTHORIZATION REQUIRED

COLORADO SPRINGS, COLORADO

CITY OF COLORADO SPRINGS MUNI (COS)

Amdt 2B 20APR23

38°48'N-104°42'W

RNAV (RNP) Z RWY 17L

COLORADO SPRINGS, COLORADO

AL-87 (FAA)

25219

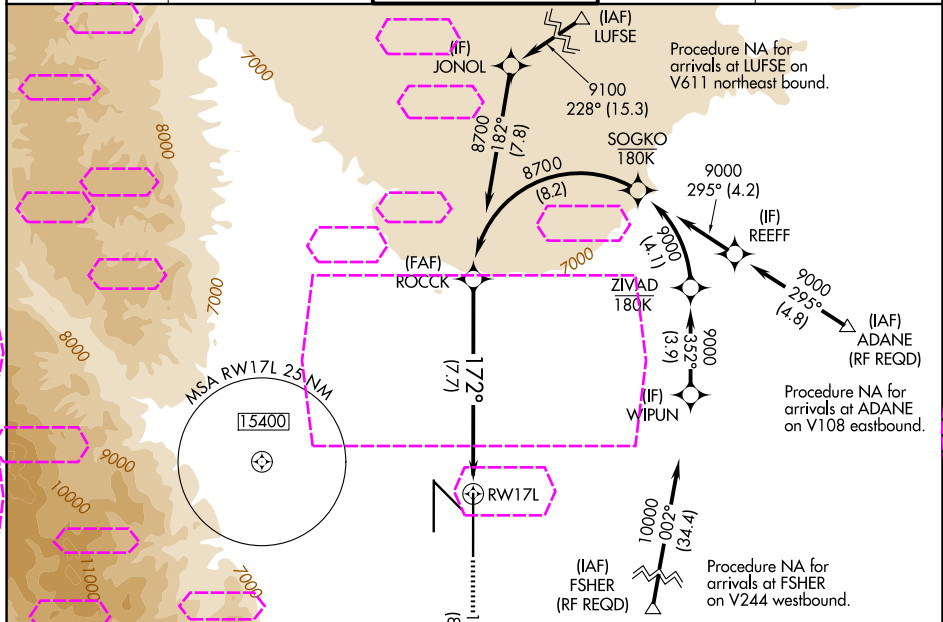
APP CRS	Rwy Ldg	13500
172°	TDZE	6187
	Apt Elev	6187

RNAV (RNP) Z RWY 17L

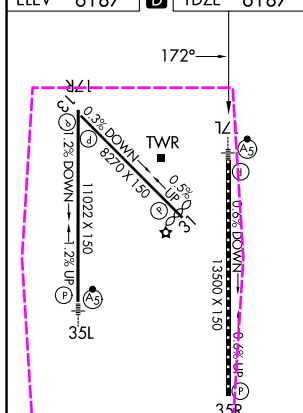
CITY OF COLORADO SPRINGS MUNI (COS)

RNP AR APCH - GPS.	MALSR	MISSED APPROACH: Climb to 9000 on track 172° to CEGIX and on track 130° to JEMKI and on track 084° to DRAKE and hold.
For uncompensated Baro-VNAV systems, procedure NA below -21°C or above 44°C.	AS	

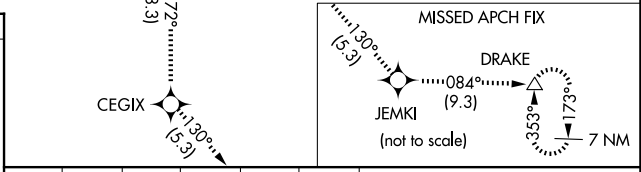
ATIS	SPRINGS APP CON	SPRINGS TOWER	GND CON	CLNC DEL
125.0 254.3	124.0 257.875	119.9 360.6	121.7 348.6	134.45 363.125



ELEV	6187	TDZE	6187
------	------	------	------



MRL Rwy 13-31
HIRL Rwy 17R-35L and 17L-35R
REIL Rwy 13, 17R, 31 and 35R
TDZ/CL Rwy 17L and 35R



9000	CEGIX	tr 130°	JEMKI	tr 084°	DRAKE	ROCCK	8700	GP 3.00° TCH 57
tr 172°								
See planview for multiple IF locations.								
7.7 NM								
CATEGORY	A	B	C	D				
RNP 0.15 DA		6557/40	370 (400-3/4)					
RNP 0.25 DA		6644/50	457 (500-1)					
RNP 0.30 DA		6920-2	733 (800-2)					

AUTHORIZATION REQUIRED

COLORADO SPRINGS, COLORADO

Amdt 2B 20APR23

CITY OF COLORADO SPRINGS MUNI (COS)

38°48'N-104°42'W

RNAV (RNP) Z RWY 17L

SW-1, 07 AUG 2025 to 04 SEP 2025