

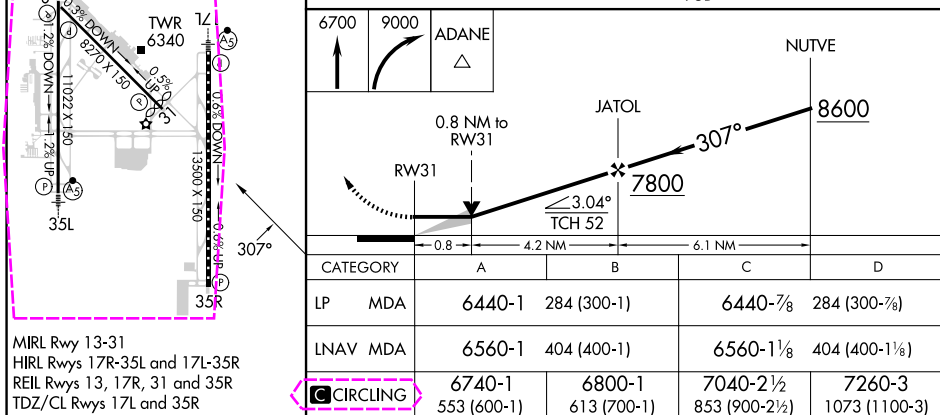
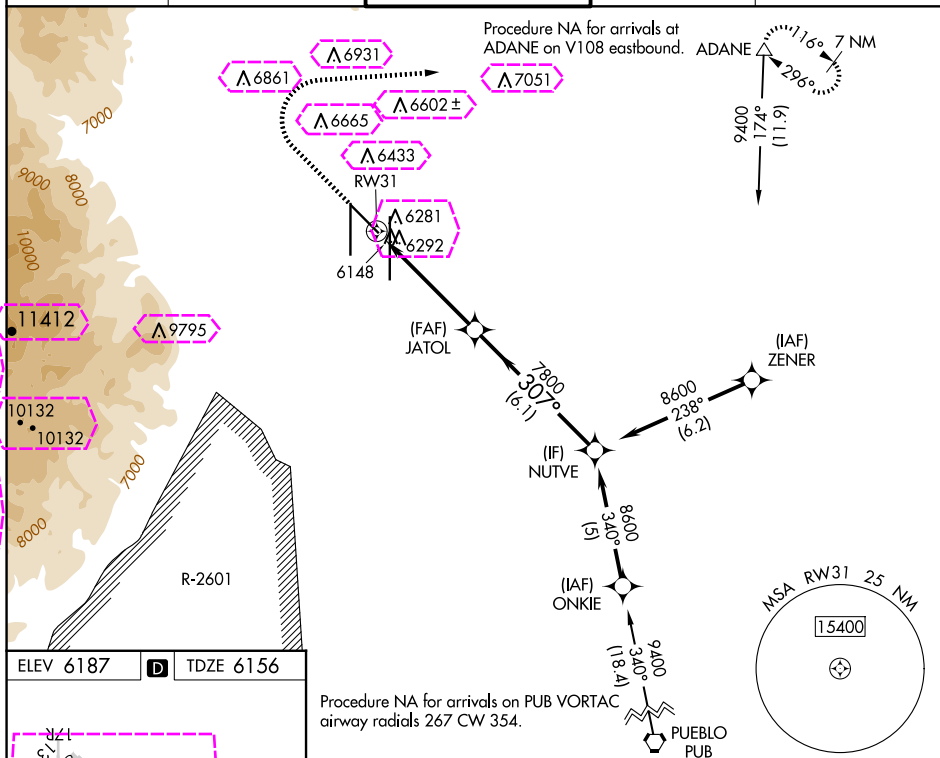
WAAS CH 40040 W31A	APP CRS 307°	Rwy Ldg TDZE Apt Elev	7914 6156 6187
--	------------------------	-----------------------------	---

RNAV (GPS) RWY 31

CITY OF COLORADO SPRINGS MUNI (COS)

<div style="border: 1px solid black; padding: 2px; display: inline-block;"> <div style="background-color: black; color: white; text-align: center; width: 10px; height: 10px; margin: 0 auto;">T</div> <div style="background-color: black; color: white; text-align: center; width: 10px; height: 10px; margin: 0 auto;">A</div> </div>	DME/DME RNP-0.3 NA.	MISSED APPROACH: Climb to 6700 then climbing right turn to 9000 direct ADANE and hold.
--	---------------------	--

ATIS 125.0 254.3	SPRINGS APP CON 124.0 257.875	SPRINGS TOWER 119.9 360.6	GND CON 121.7 348.6	CLNC DEL 134.45 363.125
---------------------	----------------------------------	------------------------------	------------------------	----------------------------



COLORADO SPRINGS, COLORADO
Amdt 2A 17AUG17

CITY OF COLORADO SPRINGS MUNI (COS)
38°48'N-104°42'W **RNAV (GPS) RWY 31**

COLORADO SPRINGS, COLORADO


AL-87 (FAA)

25219

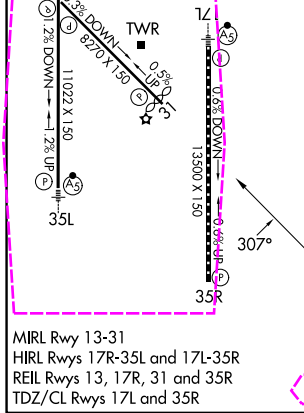
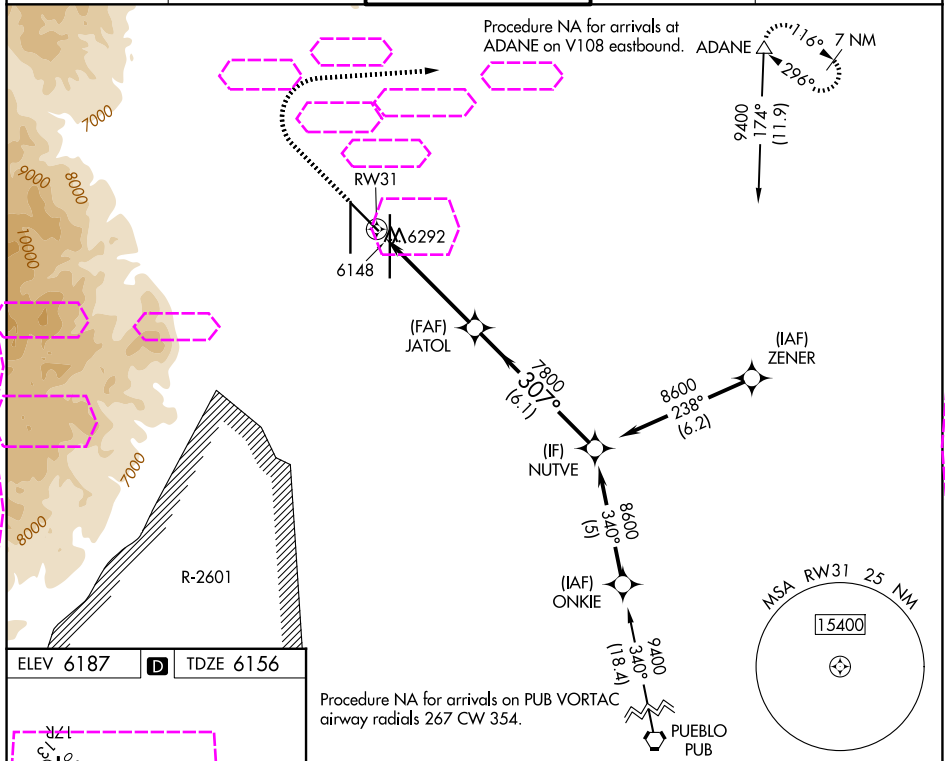
WAAS CH 40040 W31A	APP CRS 307°	Rwy Ldg TDZE 6156 Apt Elev 6187
--	------------------------	---







RNAV (GPS) RWY 31

CITY OF COLORADO SPRINGS MUNI (COS)

	DME/DME RNP-0.3 NA.	MISSED APPROACH: Climb to 6700 then climbing right turn to 9000 direct ADANE and hold.
---	---------------------	--

ATIS 125.0 254.3	SPRINGS APP CON 124.0 257.875	SPRINGS TOWER 119.9 360.6	GND CON 121.7 348.6	CLNC DEL 134.45 363.125
----------------------------	---	-------------------------------------	-------------------------------	-----------------------------------



6700		9000		ADANE △		NUTVE	
							
RW31		0.8 NM to RW31		JATOL		8600	
							
		3.04°		7800		307°	
		TCH 52					
0.8		4.2 NM		6.1 NM			
CATEGORY		A		B		C	
LP MDA		6440-1 284 (300-1)		6440-7/8 284 (300-7/8)		D	
LNAV MDA		6560-1 404 (400-1)		6560-1 1/8 404 (400-1 1/8)			
CIRCLING		6740-1 553 (600-1)		6800-1 613 (700-1)		7040-2 1/2 853 (900-2 1/2)	
						7260-3 1073 (1100-3)	

COLORADO SPRINGS, COLORADO
Amdt 2A 17AUG17

38°48'N-104°42'W

CITY OF COLORADO SPRINGS MUNI (COS)

RNAV (GPS) RWY 31

SW-1, 07 AUG 2025 to 04 SEP 2025