


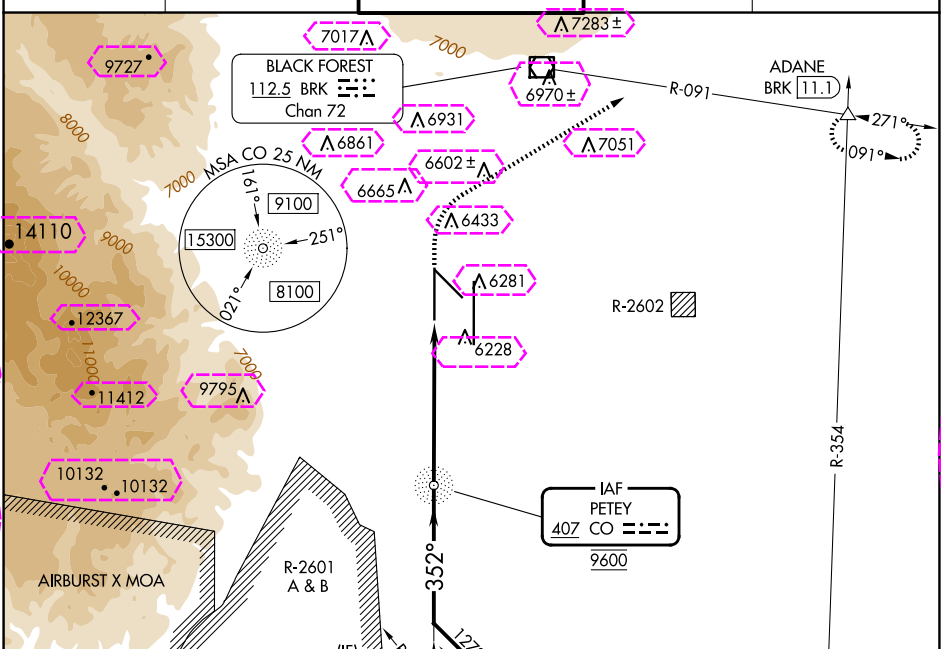
CO NDB <u>407</u>	APP CRS 352°	Rwy Ldg 11022 TDZE 6075 Apt Elev 6187
-----------------------------	------------------------	--

NDB RWY 35L

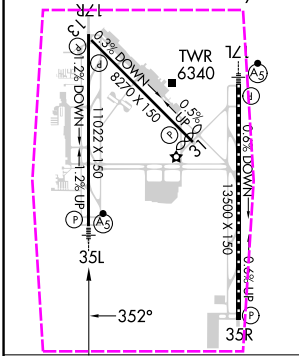
CITY OF COLORADO SPRINGS MUNI (COS)

<p>T</p> <p>A</p>	<p>RADAR monitoring required when R-2601 in use. For inop ALS, increase S-35L Cat A/B visibility RVR 5500, and Cat C/D to 1½ SM.</p>	<p>MALSR</p> 	<p>MISSED APPROACH: Climb to 6700 then climbing right turn to 9000 on heading 051° and on BRK VOR/DME R-091 to ADANE INT/BRK 11.1 DME and hold.</p>
---------------------------------	--	---	--

ATIS 125.0 254.3	SPRINGS APP CON 124.0 257.875	SPRINGS TOWER 119.9 360.6	GND CON 121.7 348.6	CLNC DEL 134.45 363.125
---------------------	----------------------------------	------------------------------	------------------------	----------------------------



ELEV 6187	D	TDZE 6075
HIRL Rwy 17R-35L and 17L-35R REIL Rwy 13, 17R, 31 and 35R TDZ/CL Rwy 17L and 35R MIRL Rwy 13-31		



FAF to MAP 6 NM					
Knots	60	90	120	150	180
Min:Sec	6:00	4:00	3:00	2:24	2:00

Remain within 10 NM

CO NDB

172°

9600

8000

352°

8000

3.00°

TCH 55

6 NM

6700 ↑	9000 ↘ hdg 051°	BRK R-091	ADANE △
-----------	-----------------------	--------------	------------

VGSi and descent angles not coincident
(VGSi Angle 3.00/TCH 72).

CATEGORY	A	B	C	D
S-35L	6540/40 465 (400-¾)		6540/50 465 (400-1)	
C CIRCLING	6740-1 553 (600-1)	6760-1 573 (600-1)	6980-2¼ 793 (800-2¼)	7240-3 1053 (1100-3)

SW-1, 10 JUL 2025 to 07 AUG 2025

SW-1, 10 JUL 2025 to 07 AUG 2025

COLORADO SPRINGS, COLORADO


AL-87 (FAA)

25219

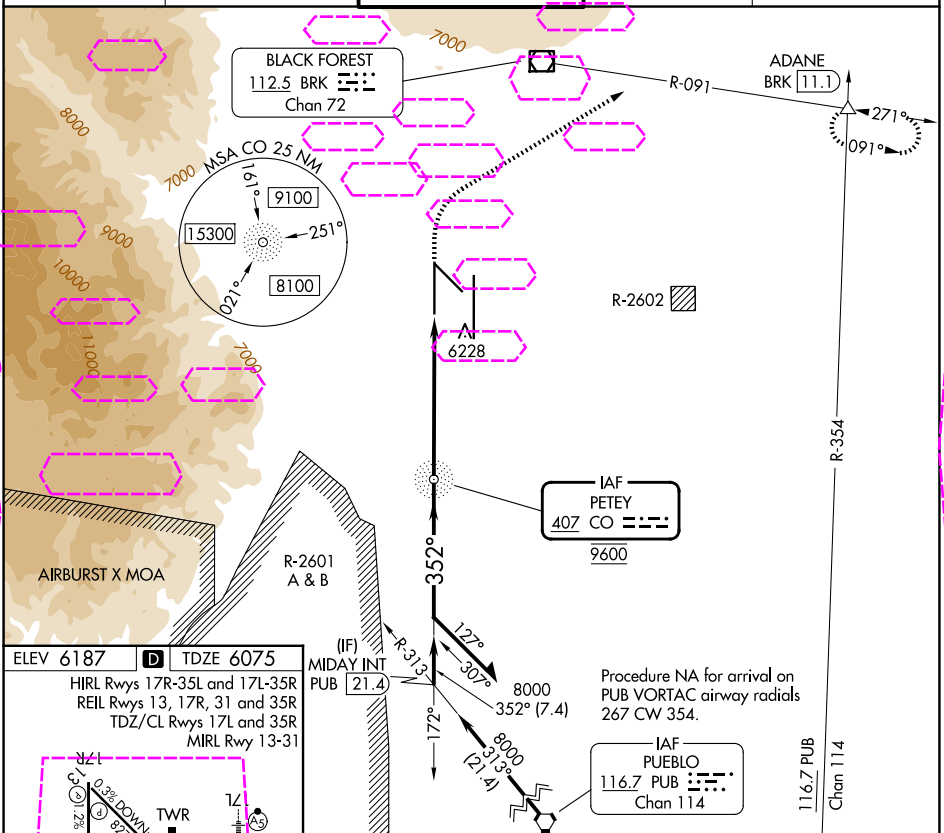
CO NDB 407	APP CRS 352°	Rwy Ldg TDZE Apt Elev 11022 6075 6187
----------------------	------------------------	---

NDB RWY 35L

CITY OF COLORADO SPRINGS MUNI (COS)

▼ ▲	RADAR monitoring required when R-2601 in use. For inop ALS, increase S-35L Cat A/B visibility RVR 5500, and Cat C/D to 1½ SM.	MALSR 	MISSED APPROACH: Climb to 6700 then climbing right turn to 9000 on heading 051° and on BRK VOR/DME R-091 to ADANE INT/BRK 11.1 DME and hold.
----------------------	---	--	--

ATIS 125.0 254.3	SPRINGS APP CON 124.0 257.875	SPRINGS TOWER 119.9 360.6	GND CON 121.7 348.6	CLNC DEL 134.45 363.125
----------------------------	---	-------------------------------------	-------------------------------	-----------------------------------



COLORADO SPRINGS, COLORADO

CITY OF COLORADO SPRINGS MUNI (COS)

Amdt 28 19MAY22

38°48'N-104°42'W

NDB RWY 35L

SW-1, 07 AUG 2025 to 04 SEP 2025

SW-1, 07 AUG 2025 to 04 SEP 2025