

COLORADO SPRINGS, COLORADO

AL-87 (FAA)

25163

LOC/DME I-AHI	APP CRS	Rwy Ldg
109.1	352°	13500
Chan 28		TDZE 6118
		Apt Elev 6187

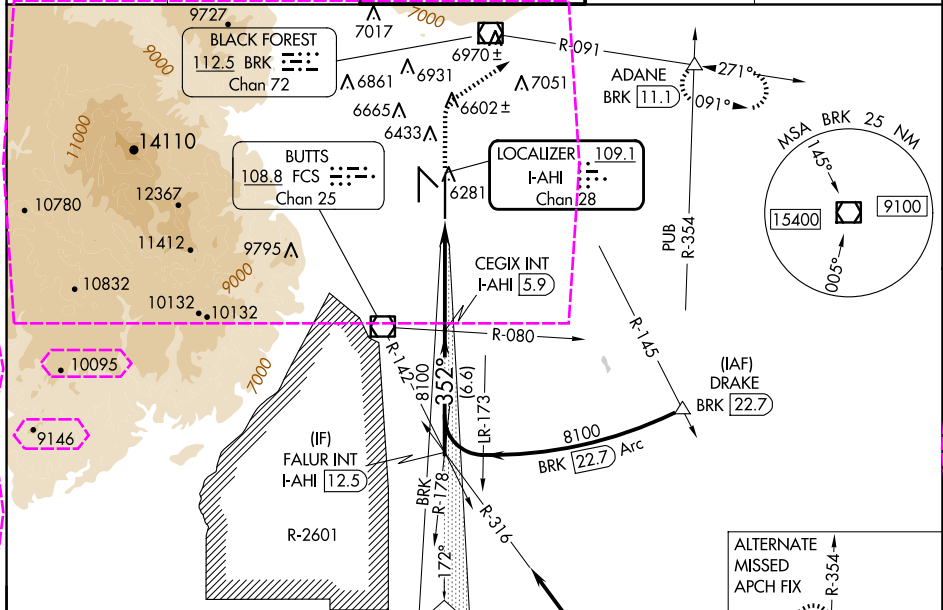
ILS or LOC RWY 35R

CITY OF COLORADO SPRINGS MUNI (COS)

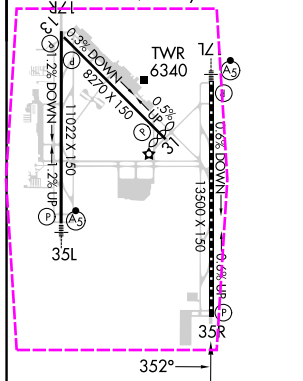
⚠ **⚠** RADAR required when R-2601 in use.

MISSED APPROACH: Climb to 6700 then climbing right turn to 9000 on heading 047° and on BRK VOR/DME R-091 to ADANE INT/BRK 11.1 DME and hold.

ATIS 125.0 254.3	SPRINGS APP CON 124.0 257.875	SPRINGS TOWER 119.9 360.6	GND CON 121.7 348.6	CLNC DEL 134.45 363.125
----------------------------	---	-------------------------------------	-------------------------------	-----------------------------------



ELEV 6187	D TDZE 6118
MIRL Rwy 13-31	
HIRL Rwys 17R-35L and 17L-35R	
REIL Rwys 13, 17R, 31 and 35R	
TDZ/CL Rwys 17L and 35R	



Procedure NA for arrival on PUB VORTAC airway radials 267 CW 354.

IAF PUEBLO 116.7 PUB Chan 114

ALTERNATE MISSED APCH FIX

R-245 354° R-354 174° R-114 112.1 HGO Chan 58

DRAKE PUB 118.7

VGSI and ILS glidepath not coincident (VGSI Angle 3.00/TCH 71).

FALUR INT I-AHI 12.5

CEGIX INT I-AHI 5.9

GS 3.00° TCH 55

Use I-AHI DME when on the localizer course.

6.6 NM 5.3 NM 0.8 NM

8100 352° 8100

I-AHI 0.6

*LOC only

CATEGORY	A	B	C	D
S-ILS 35R		6318/40	200 (200-¾)	
S-LOC 35R		6420/55 302 (300-1)	6420/45 302 (300-¾)	
CIRCLING	6740-1 553 (600-1)	6800-1 613 (700-1)	7040-2½ 853 (900-2½)	7260-3 1073 (1100-3)

COLORADO SPRINGS, COLORADO
Amdt 2A 17AUG17

CITY OF COLORADO SPRINGS MUNI (COS)
38°48'N-104°42'W
ILS or LOC RWY 35R

SW-1, 10 JUL 2025 to 07 AUG 2025

SW-1, 10 JUL 2025 to 07 AUG 2025

LOC/DME I-AHI 109.1 Chan 28	APP CRS 352°	Rwy Ldg 13500 TDZE 6118 Apt Elev 6187
---	------------------------	--

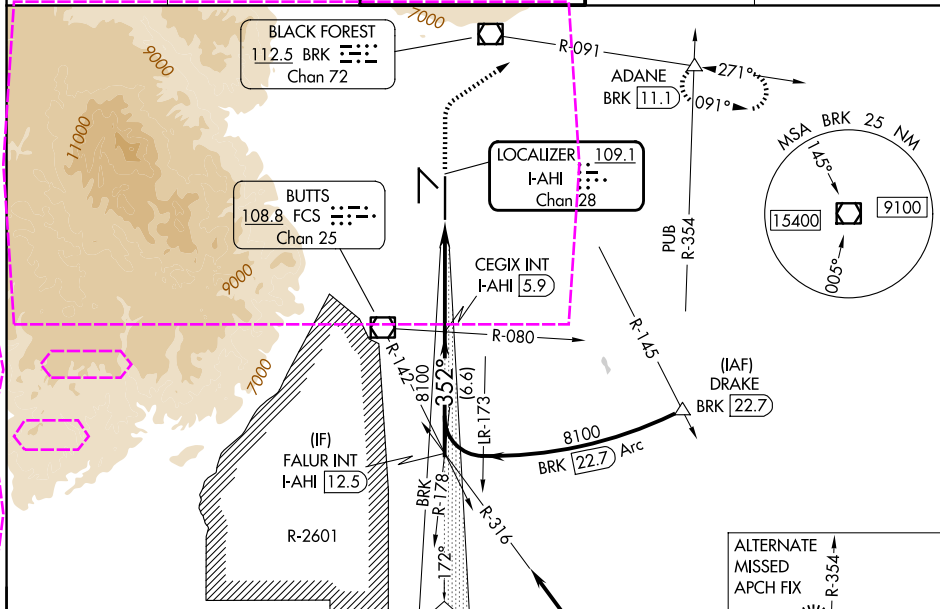
ILS or LOC RWY 35R

CITY OF COLORADO SPRINGS MUNI (COS)

T RADAR required when R-2601 in use.

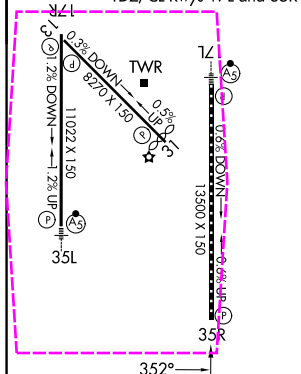
MISSED APPROACH: Climb to 6700 then climbing right turn to 9000 on heading 047° and on BRK VOR/DME R-091 to ADANE INT/BRK 11.1 DME and hold.

ATIS 125.0 254.3	SPRINGS APP CON 124.0 257.875	SPRINGS TOWER 119.9 360.6	GND CON 121.7 348.6	CLNC DEL 134.45 363.125
---------------------	----------------------------------	------------------------------	------------------------	----------------------------



ELEV 6187	D	TDZE 6118
-----------	----------	-----------

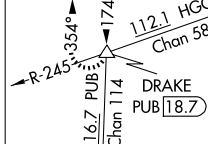
MIRL Rwy 13-31
HIRL Rwy 17R-35L and 17L-35R
REIL Rwy 13, 17R, 31 and 35R
TDZ/CL Rwy 17L and 35R



Procedure NA for arrival on
PUB VORTAC airway radials
267 CW 354.

IAF
PUEBLO
116.7 PUB
Chan 114

ALTERNATE
MISSED
APCH FIX



VGSI and ILS glidepath not coincident
(VGSI Angle 3.00/TCH 71).

FALUR INT
I-AHI 12.5

6700 ↑	9000 ↗ hdg 047°	BRK R-091	ADANE △
-----------	--------------------------	--------------	------------

CATEGORY	A	B	C	D
S-LS 35R	6318/40		200 (200-¾)	
S-LOC 35R	6420/55	302 (300-1)	6420/45	302 (300-¾)
CIRCLING	6740-1	6800-1	7040-2½	7260-3
	553 (600-1)	613 (700-1)	853 (900-2½)	1073 (1100-3)

COLORADO SPRINGS, COLORADO

Amdt 2A 17AUG17

CITY OF COLORADO SPRINGS MUNI (COS)

38°48'N-104°42'W

ILS or LOC RWY 35R