

COLORADO SPRINGS, COLORADO

AL-87 (FAA)

25163

LOC I-COS	APP CRS	Rwy Ldg	11022
109.9	352°	TDZE	6075
		Apt Elev	6187

ILS or LOC RWY 35L

CITY OF COLORADO SPRINGS MUNI (COS)

ADF required for LOC only.

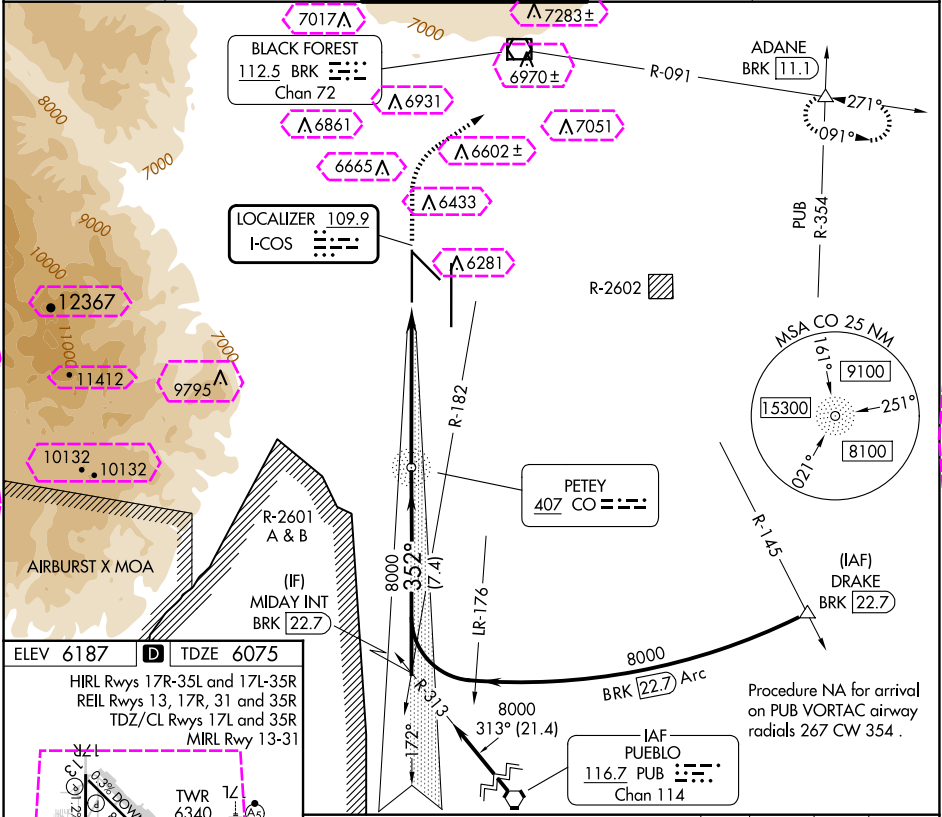
⚠ RADAR monitoring required when R-2601 in use. For inop ALS, increase S-LOC 35L Cat C/D visibility to RVR 4500.

• RVR 1800 authorized with use of FD or AP or HUD to DA.

MALSR

MISSED APPROACH: Climb to 6700 then climbing right turn to 9000 on heading 047° and BRK VOR/DME R-091 to ADANE INT/BRK 11.1 DME and hold.

ATIS	SPRINGS APP CON	SPRINGS TOWER	GND CON	CLNC DEL
125.0 254.3	124.0 257.875	119.9 360.6	121.7 348.6	134.45 363.125



ELEV 6187 **D** TDZE 6075

HIRL Rwy 17R-35L and 17L-35R
REIL Rwy 13, 17R, 31 and 35R
TDZ/CL Rwy 17L and 35R
MIRL Rwy 13-31

FAF to MAP 6 NM

Knots	60	90	120	150	180
Min:Sec	6:00	4:00	3:00	2:24	2:00

MIDAY INT BRK [22.7]	CO NDB	6700	9000	BRK R-091	ADANE
	7996	↑	hdg 047°		△
VGSI and ILS glidepath not coincident (VGSI Angle 3.00/TCH 72).					
8000	352°	8000			
GS 3.00°					
TCH 51					
	7.4 NM	6 NM			
CATEGORY	A	B	C	D	
S-ILS 35L*	6275/24 200 (100-½)				
S-LOC 35L	6340/24 265 (200-½)				
CIRCLING	6740-1 553 (600-1)	6760-1 573 (600-1)	6980-2¼ 793 (800-2¼)	7240-3 1053 (1100-3)	

COLORADO SPRINGS, COLORADO

CITY OF COLORADO SPRINGS MUNI (COS)

Amdt 40 19MAY22

38°48'N-104°42'W

ILS or LOC RWY 35L

SW-1, 10 JUL 2025 to 07 AUG 2025

SW-1, 10 JUL 2025 to 07 AUG 2025

COLORADO SPRINGS, COLORADO

AL-87 (FAA)

25219

LOC I-COS 109.9	APP CRS 352°	Rwy Ldg TDZE Apt Elev	11022 6075 6187
---------------------------	------------------------	-----------------------------	--

ILS or LOC RWY 35L

CITY OF COLORADO SPRINGS MUNI (COS)

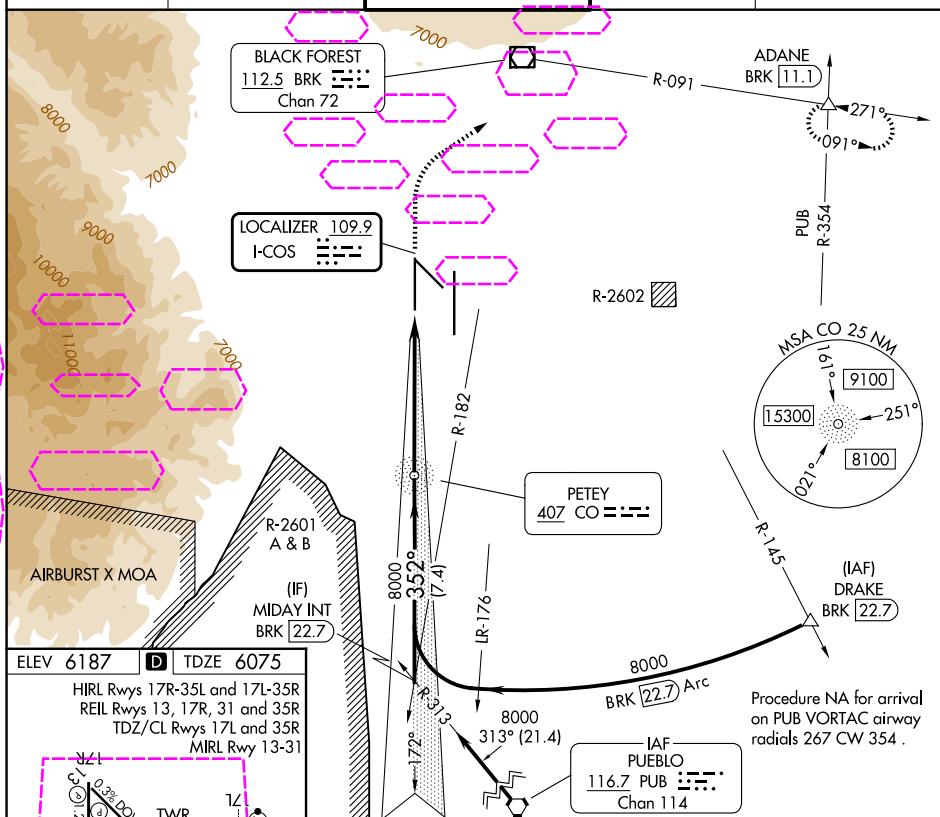
ADF required for LOC only.

- ⚠ RADAR monitoring required when R-2601 in use. For inop ALS, increase S-LOC 35L Cat C/D visibility to RVR 4500.
 *RVR 1800 authorized with use of FD or AP or HUD to DA.

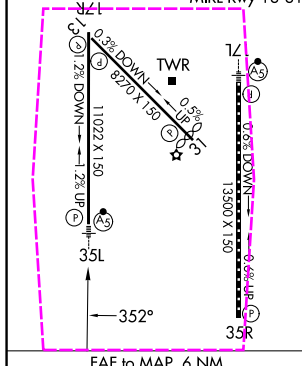


MISSED APPROACH: Climb to 6700 then climbing right turn to 9000 on heading 047° and BRK VOR/DME R-091 to ADANE INT/BRK 11.1 DME and hold.

ATIS 125.0 254.3	SPRINGS APP CON 124.0 257.875	SPRINGS TOWER 119.9 360.6	GND CON 121.7 348.6	CLNC DEL 134.45 363.125
----------------------------	---	-------------------------------------	-------------------------------	-----------------------------------



ELEV 6187	D	TDZE 6075
HIRL Rwy 17R-35L and 17L-35R REIL Rwy 13, 17R, 31 and 35R TDZ/CL Rwy 17L and 35R MIRL Rwy 13-31		



Knots	60	90	120	150	180
Min:Sec	6:00	4:00	3:00	2:24	2:00

MIDAY INT BRK 22.7	CO NDB 7996	6700	9000	BRK R-091	ADANE
GS 3.00° TCH 51	8000	8000	hdg 047°		
VGSI and ILS glidepath not coincident (VGSI Angle 3.00/TCH 72).					
7.4 NM 6 NM					
CATEGORY	A	B	C	D	
S-ILS 35L*	6275/24 200 (100-½)				
S-LOC 35L	6340/24 265 (200-½)				
CIRCLING	6740-1 553 (600-1)	6760-1 573 (600-1)	6980-2¼ 793 (800-2¼)	7240-3 1053 (1100-3)	

COLORADO SPRINGS, COLORADO

Amdt 40 19MAY22

CITY OF COLORADO SPRINGS MUNI (COS)

38°48'N-104°42'W

ILS or LOC RWY 35L

SW-1, 07 AUG 2025 to 04 SEP 2025

SW-1, 07 AUG 2025 to 04 SEP 2025