

ILS or LOC RWY 17L

SW-1, 10 JUL 2025 to 07 AUG 2025

COLORADO SPRINGS, COLORADO

AL-87 (FAA)

25219

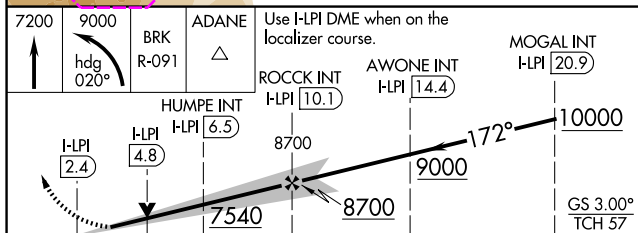
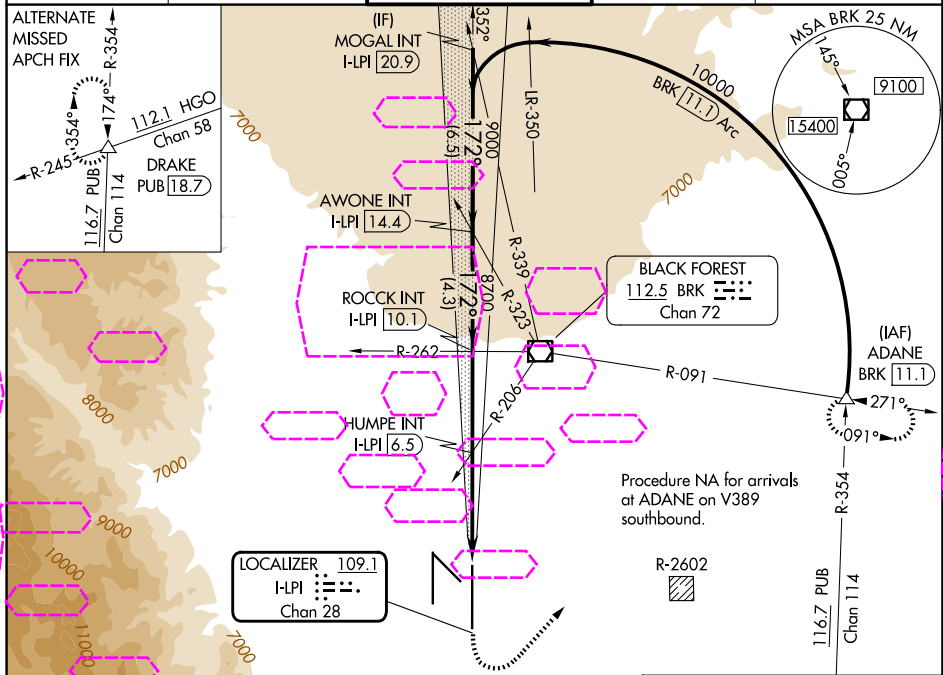
LOC/DME I-LPI	APP CRS	Rwy Ldg	13500
109.1	172°	TDZE	6187
Chan 28		Apt Elev	6187

# ILS or LOC RWY 17L

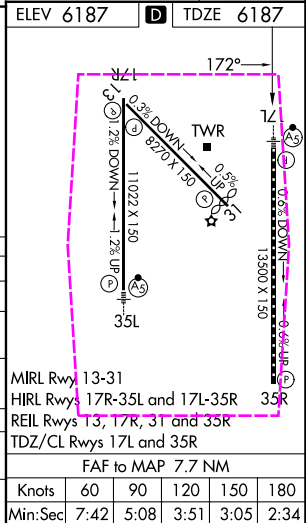
## CITY OF COLORADO SPRINGS MUNI (COS)

DME or RADAR required for procedure entry.	MALS R	MISSED APPROACH: Climb to 7200 then climbing left turn to 9000 on heading 020° and on BRK VOR/DME R-091 to ADANE INT/BRK VOR/DME 11.1 DME and hold.
Simultaneous approach authorized with Rwy 17R.		

ATIS	SPRINGS APP CON	SPRINGS TOWER	GND CON	CLNC DEL
125.0 254.3	124.0 257.875	119.9 360.6	121.7 348.6	134.45 363.125



CATEGORY	A	B	C	D
S-ILS 17L	6387/18 200 (200-1/2)			
S-LOC 17L	7540/40 1353 (1400-3/4)	7540/55 1353 (1400-1)	7540-3	1353 (1400-3)
CIRCLING	7540-1 1/4 1353 (1400-1 1/4)	7540-1 1/2 1353 (1400-1 1/2)	7540-3	1353 (1400-3)
HUMPE FIX MINIMUMS (DUAL VOR RECEIVERS OR DME REQUIRED)				
S-LOC 17L	7020/24 833 (900-1/2)	7020/40 833 (900-3/4)	7020-1 7/8	833 (900-1 1/8)
CIRCLING	7020-1 1/4	833 (900-1 1/4)	7040-2 1/2 853 (900-2 1/2)	7260-3 1073 (1100-3)



COLORADO SPRINGS, COLORADO

Amdt 3D 20APR23

38°48'N-104°42'W

CITY OF COLORADO SPRINGS MUNI (COS)

# ILS or LOC RWY 17L