

COLORADO SPRINGS, COLORADO


AL-87 (FAA)

25163

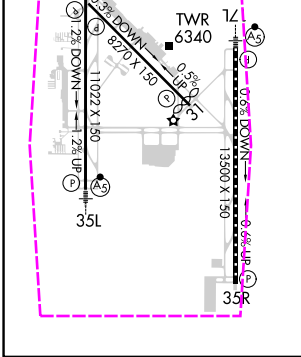
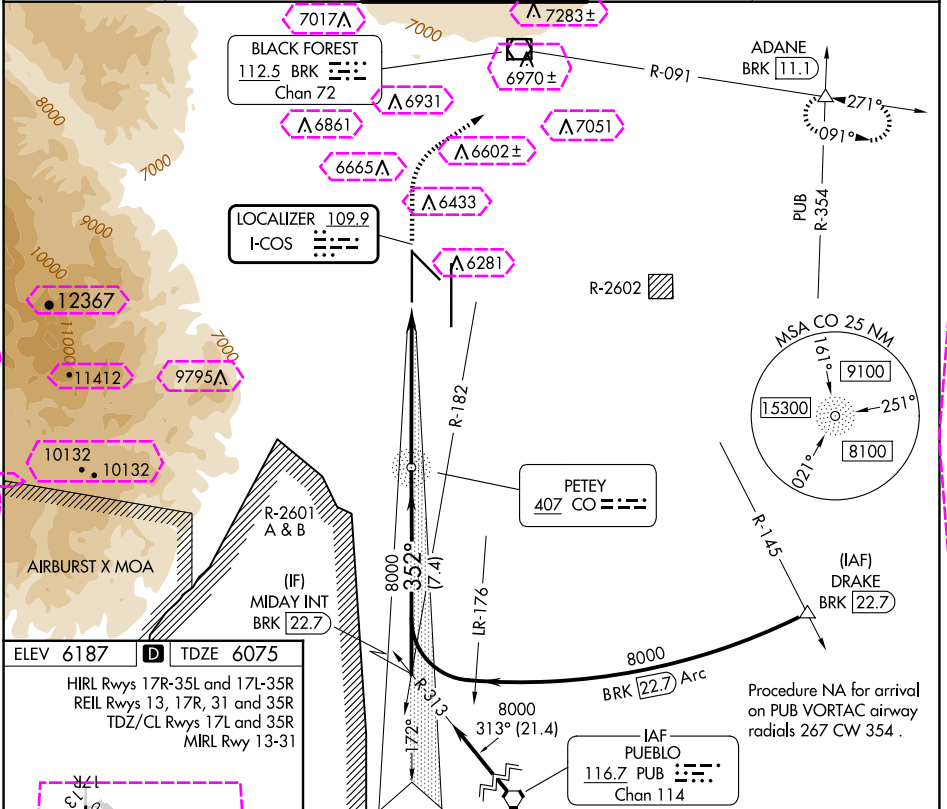
LOC I-COS	APP CRS	Rwy Ldg	11022
109.9	352°	TDZE	6075
		Apt Elev	6187

ILS RWY 35L (SA CAT II)

CITY OF COLORADO SPRINGS MUNI (COS)

V RADAR monitoring required when R-2601 in use. Requires specific OPSPEC, MSPEC, or LOA approval.	MALSR 	MISSED APPROACH: Climb to 6700 then climbing right turn to 9000 on heading 047° and BRK VOR/DME R-091 to ADANE INT/BRK 11.1 DME and hold.
--	---	---

ATIS 125.0 254.3	SPRINGS APP CON 124.0 257.875	SPRINGS TOWER 119.9 360.6	GND CON 121.7 348.6	CLNC DEL 134.45 363.125
---------------------	----------------------------------	------------------------------	------------------------	----------------------------



MIDAY INT BRK 22.7	CO NDB 7996	6700 ↑ hdg 047°	9000 ↑ hdg 047°	BRK R-091	ADANE △
8000	8000	8000	8000	8000	8000
GS 3.00° TCH 51	7.4 NM	6 NM	9.16 NM		
CATEGORY	A	B	C	D	
S-ILS 35L	RA 123/12 100 DA 6175				
SA CATEGORY II ILS - SPECIAL AIRCREW & AIRCRAFT CERTIFICATION REQUIRED					

COLORADO SPRINGS, COLORADO

CITY OF COLORADO SPRINGS MUNI (COS)

Amdt 40 19MAY22

38°48'N-104°42'W

ILS RWY 35L (SA CAT II)

COLORADO SPRINGS, COLORADO


AL-87 (FAA)

25219

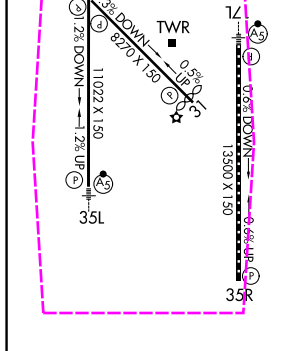
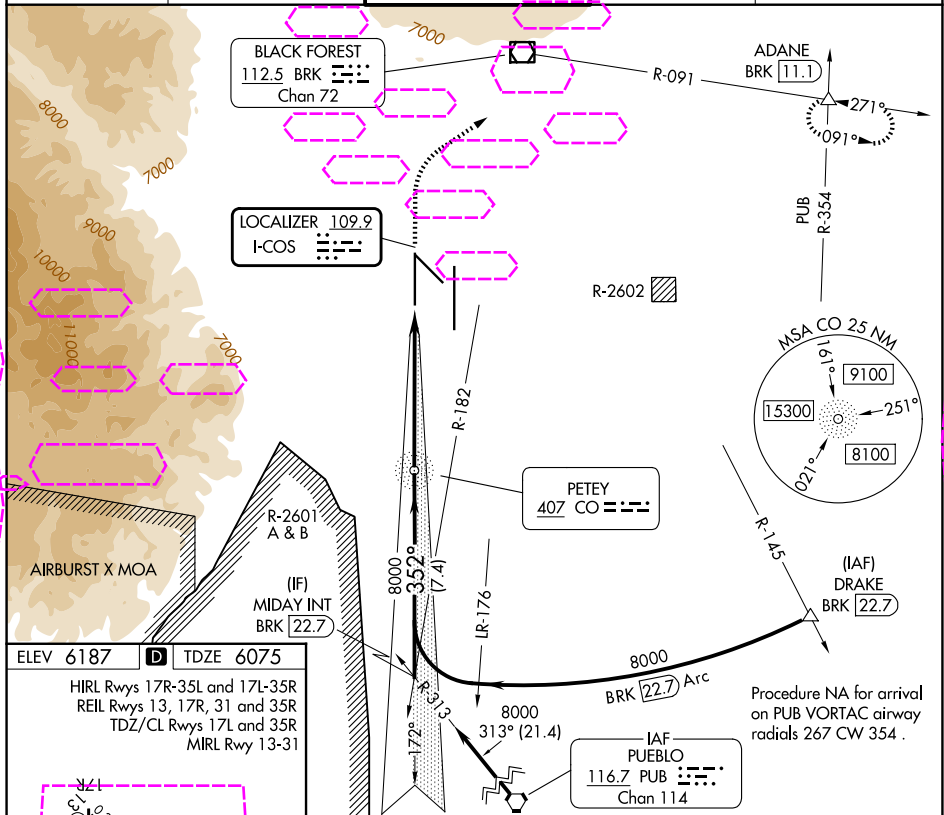
LOC I-COS	APP CRS	Rwy Ldg	11022
109.9	352°	TDZE	6075
		Apt Elev	6187

ILS RWY 35L (SA CAT II)

CITY OF COLORADO SPRINGS MUNI (COS)

7 RADAR monitoring required when R-2601 in use. Requires specific OPSPEC, MSPEC, or LOA approval.	MALSR 	MISSED APPROACH: Climb to 6700 then climbing right turn to 9000 on heading 047° and BRK VOR/DME R-091 to ADANE INT/BRK 11.1 DME and hold.
--	---	---

ATIS 125.0 254.3	SPRINGS APP CON 124.0 257.875	SPRINGS TOWER 119.9 360.6	GND CON 121.7 348.6	CLNC DEL 134.45 363.125
---------------------	----------------------------------	------------------------------	------------------------	----------------------------



MIDAY INT BRK 22.7	CO NDB 7996	6700 ↑	9000 hdg 047°	BRK R-091	ADANE △
8000	8000	352°	8000	916°	
GS 3.00° TCH 51	7.4 NM	6 NM	916°		

CATEGORY	A	B	C	D
S-ILS 35L	RA 123/12 100 DA 6175			
SA CATEGORY II ILS - SPECIAL AIRCREW & AIRCRAFT CERTIFICATION REQUIRED				

COLORADO SPRINGS, COLORADO

CITY OF COLORADO SPRINGS MUNI (COS)

Amdt 40 19MAY22

38°48'N-104°42'W

ILS RWY 35L (SA CAT II)

SW-1, 07 AUG 2025 to 04 SEP 2025