

COLORADO SPRINGS, COLORADO

AL-87 (FAA)

25163

LOC/DME I-LPI	APP CRS	Rwy Ldg	13500
109.1	172°	TDZE	6187
Chan 28		Apt Elev	6187

ILS RWY 17L (SA CAT I & II)

CITY OF COLORADO SPRINGS MUNI (COS)

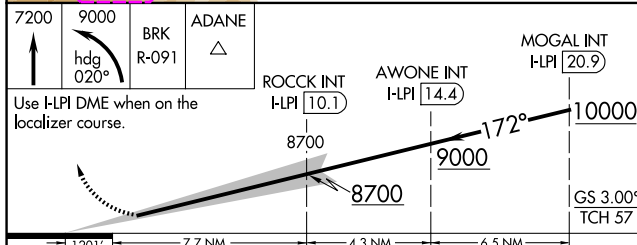
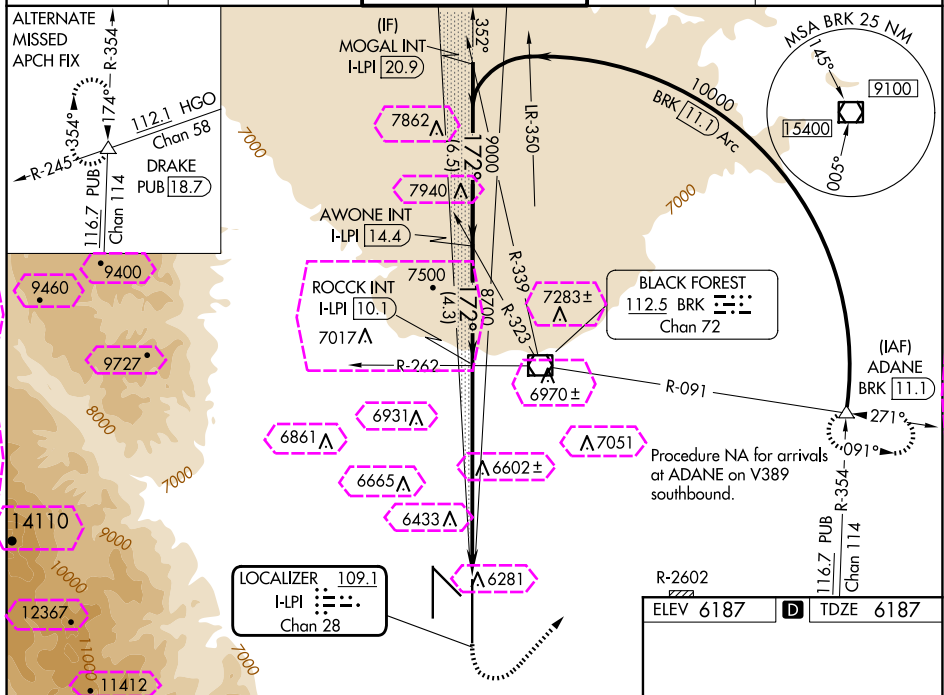
DME or RADAR required for procedure entry.

- Simultaneous approach authorized with Rwy 17R.
SA CAT I: Required specific OPSPEC, MSPEC, or LOA approval and use of HUD to DH. SA CAT II: Reduced Lighting: Requires specific OPSPEC, MSPEC, or LOA approval and use of autoland or HUD to touchdown.



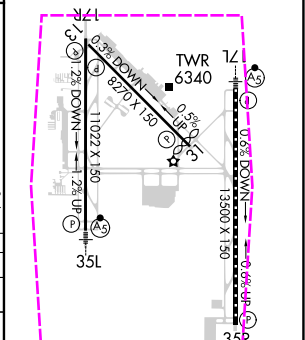
MISSED APPROACH: Climb to 7200 then dimbing left turn to 9000 on heading 020° and on BRK VOR/DME R-091 to ADANE INT/BRK VOR/DME 11.1 DME and hold.

ATIS 125.0 254.3	SPRINGS APP CON 124.0 257.875	SPRINGS TOWER 119.9 360.6	GND CON 121.7 348.6	CLNC DEL 134.45 363.125
---------------------	----------------------------------	------------------------------	------------------------	----------------------------



CATEGORY	A	B	C	D
S-ILS 17L	SA CAT I	RA 169/14	150	DA 6337
S-ILS 17L	SA CAT II	RA 105/16	100	DA 6287

SA CATEGORY I & II ILS SPECIAL AIRCREW & AIRCRAFT CERTIFICATION REQUIRED



MIRL Rwy 13-31
HIRL Rws 17R-35L and 17L-35R
REIL Rws 13, 17R, 31 and 35R
TDZ/CL Rws 17L and 35R

COLORADO SPRINGS, COLORADO

CITY OF COLORADO SPRINGS MUNI (COS)

Amdt 3D 20APR23

38°48'N-104°42'W

ILS RWY 17L (SA CAT I & II)

SW-1, 10 JUL 2025 to 07 AUG 2025

SW-1, 10 JUL 2025 to 07 AUG 2025

LOC/DME I-LPI 109.1 Chan 28	APP CRS 172°	Rwy Ldg 13500 TDZE 6187 Apt Elev 6187
---	------------------------	--

ILS RWY 17L (SA CAT I & II)
CITY OF COLORADO SPRINGS MUNI (COS)

	DME or RADAR required for procedure entry.	
--	--	--

T Simultaneous approach authorized with Rwy 17R.

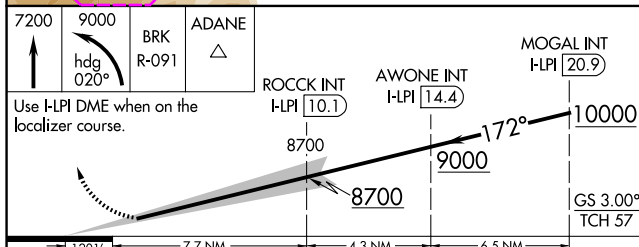
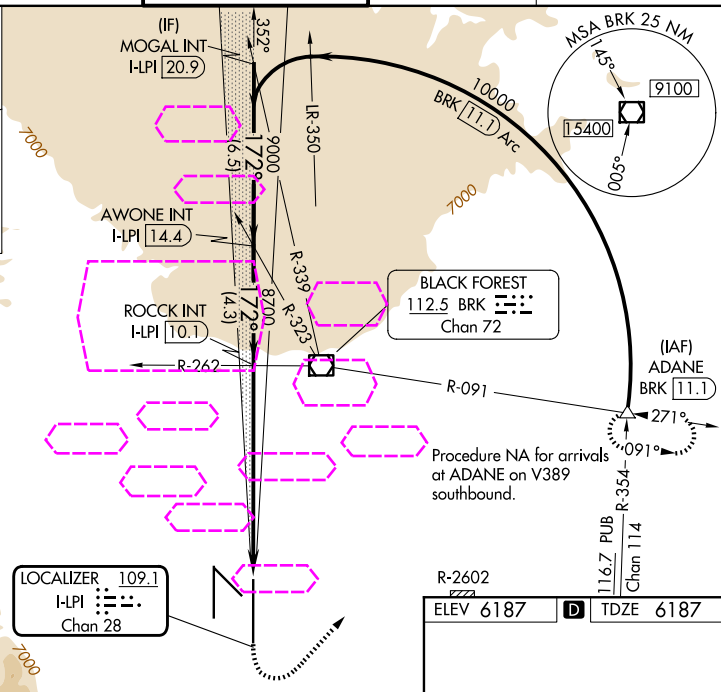
A SA CAT I: Required specific OPSPEC, MSPEC, or LOA approval and use of HUD to DH. SA CAT II: Reduced Lighting: Requires specific OPSPEC, MSPEC, or LOA approval and use of autoland or HUD to touchdown.

MALSR



MISSED APPROACH: Climb to 7200 then climbing left turn to 9000 on heading 020° and on BRK VOR/DME R-091 to ADANE INT/BRK VOR/DME 11.1 DME and hold.

ATIS 125.0 254.3	SPRINGS APP CON 124.0 257.875	SPRINGS TOWER 119.9 360.6	GND CON 121.7 348.6	CLNC DEL 134.45 363.125
---------------------	----------------------------------	------------------------------	------------------------	----------------------------



CATEGORY	A	B	C	D
S-ILS 17L	SA CAT I	RA 169/14	150	DA 6337
S-ILS 17L	SA CAT II	RA 105/16	100	DA 6287

SA CATEGORY I & II ILS SPECIAL AIRCREW
& AIRCRAFT CERTIFICATION REQUIRED

MIRL Rwy 13-31

HIRL Rwy's 17R-35L and 17L-35R

REIL Rwy 13, 17R, 31 and 35R

TDZ/CL Rwy 17L and 35R

SW-1, 07 AUG 2025 to 04 SEP 2025