

CHATTANOOGA, TENNESSEE

AL-79 (FAA)

23278

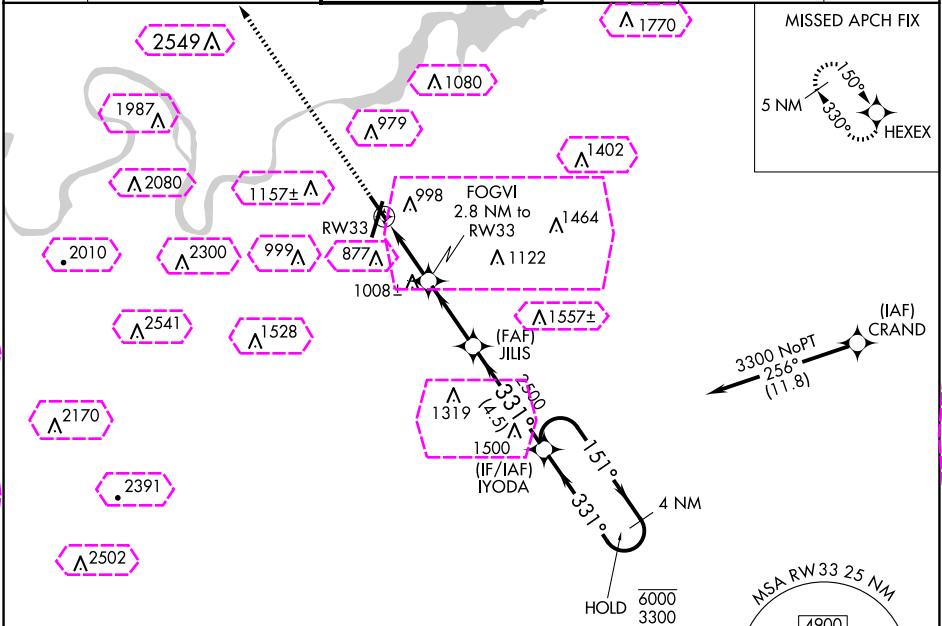
APP CRS	Rwy Idg	5000
331°	TDZE	672
	Apt Elev	683

RNAV (GPS) RWY 33

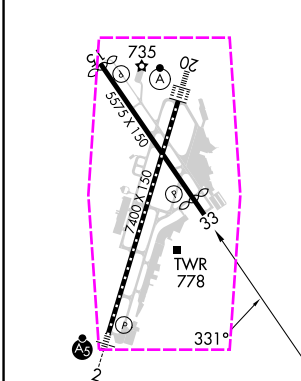
LOVELL FLD (CHA)

RNP APCH - GPS.	MISSED APPROACH: Climb to 4100 direct HEXEX and hold. * Missed approach requires minimum climb of 235 feet per NM to 3000.
Straight-In Rwy 33 NA at night, Circling Rwy 15, 33 NA at night. Rwy 33 helicopter visibility reduction below 1 SM NA.	

ATIS 119.85	CHATTANOOGA APP CON ★ 125.1 379.1	CHATTANOOGA TOWER ★ 118.3 (CTAF) 257.8	GND CON 121.7 348.6	CLNC DEL 120.95 348.6	UNICOM 122.95
----------------	--------------------------------------	---	------------------------	--------------------------	------------------



ELEV 683	D	TDZE 672
----------	---	----------



MIRL Rwy 15-33
HIRL Rwy 2-20
TDZ/CL Rwy 20

4100	HEXEX	IYODA 4 NM Holding Pattern			
CATEGORY	A	B	C	D	
RNAV MDA*	1260-1	588 (600-1)	1260-1¾	588 (600-1¾)	
RNAV MDA	1520-1 848 (900-1)	1520-1¼ 848 (900-1¼)	1520-2½	848 (900-2½)	
CIRCLING	1520-1¼	837 (900-1¼)	1520-2½ 837 (900-2½)	1580-3 897 (900-3)	

CHATTANOOGA, TENNESSEE
Amdt 2 15JUN23

35°02'N-85°12'W

RNAV (GPS) RWY 33

LOVELL FLD (CHA)

CHATTANOOGA, TENNESSEE

AL-79 (FAA)

25219

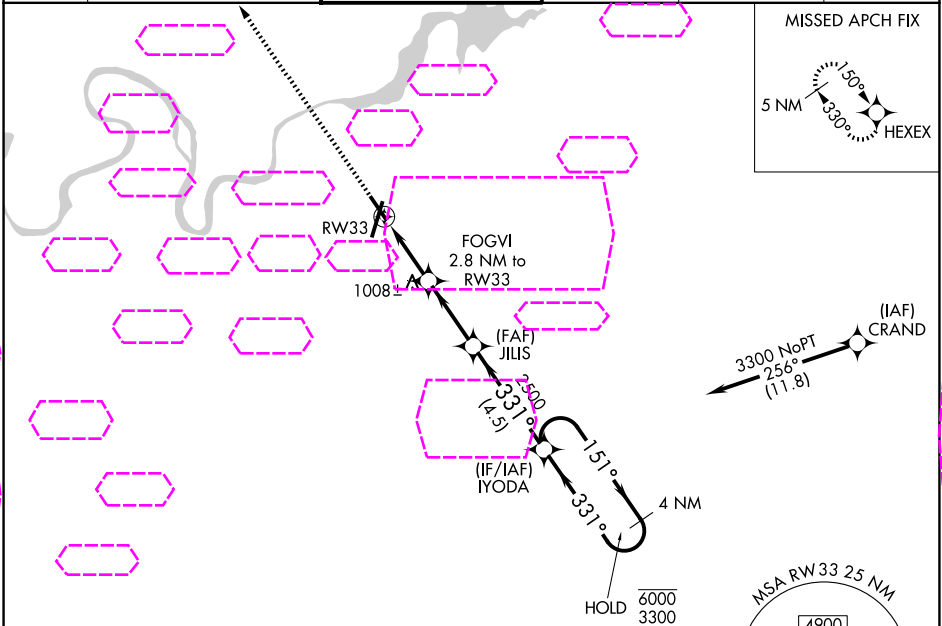
APP CRS 331°	Rwy Ldg 5000
	TDZE 672
	Apt Elev 683

RNAV (GPS) RWY 33

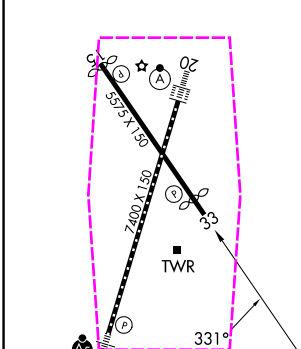
LOVELL FLD (CHA)

RNP APCH - GPS.	MISSED APPROACH: Climb to 4100 direct HEXEX and hold. * Missed approach requires minimum climb of 235 feet per NM to 3000.
Straight-In Rwy 33 NA at night, Circling Rwy 15, 33 NA at night. Rwy 33 helicopter visibility reduction below 1 SM NA.	

ATIS 119.85	CHATTANOOGA APP CON ★ 125.1 379.1	CHATTANOOGA TOWER ★ 118.3 (CTAF) 257.8	GND CON 121.7 348.6	CLNC DEL 120.95 348.6	UNICOM 122.95
----------------	--------------------------------------	---	------------------------	--------------------------	------------------



ELEV 683	D	TDZE 672
----------	---	----------



MIRL Rwy 15-33
HIRL Rwy 2-20
TDZ/CL Rwy 20

4100

HEXEX

IYODA

4 NM Holding Pattern

FOGVI

2.8 NM to RW33

JILIS

2500

151°

6000

← 331°

3300

RW33

1600

3.00°

TCH 40

2.8 NM

4.5 NM

CATEGORY	A	B	C	D
RNAV MDA*	1260-1	588 (600-1)	1260-1¾	588 (600-1¾)
RNAV MDA	1520-1 848 (900-1)	1520-1¼ 848 (900-1¼)	1520-2½	848 (900-2½)
CIRCLING	1520-1¼	837 (900-1¼)	1520-2½ 837 (900-2½)	1580-3 897 (900-3)

CHATTANOOGA, TENNESSEE
Amdt 2 15JUN23

35°02'N-85°12'W

LOVELL FLD (CHA)

RNAV (GPS) RWY 33

SE-1, 07 AUG 2025 to 04 SEP 2025