

CHATTANOOGA, TENNESSEE

AL-79 (FAA)

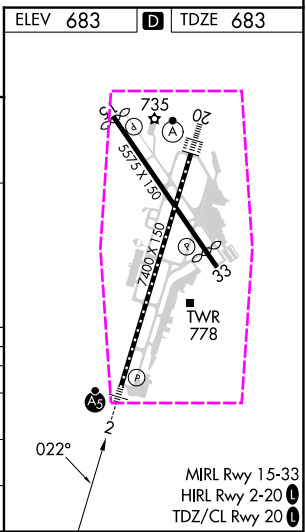
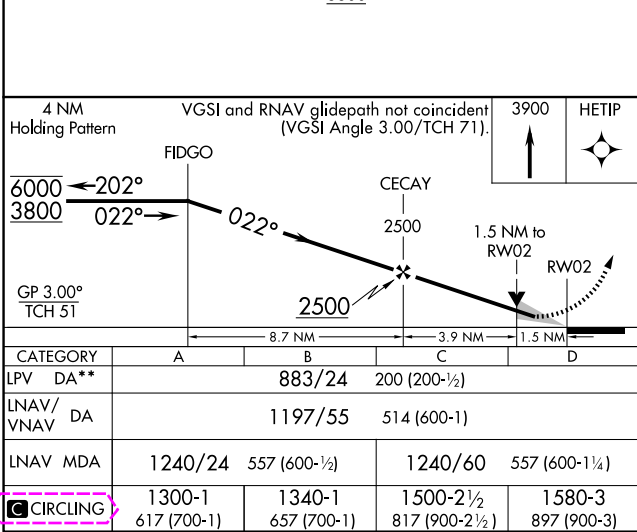
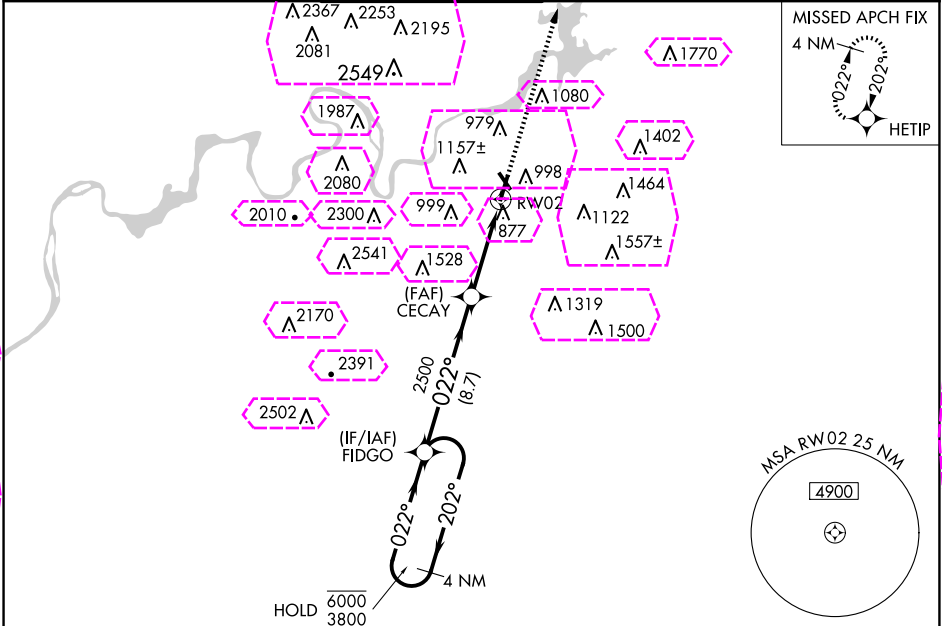
23278

WAAS CH 65605 W02A	APP CRS 022°	Rwy Idg TDZE 683 Apt Elev 683
--	------------------------	---

RNAV (GPS) RWY 2

LOVELL FLD (CHA)

RNP APCH - GPS.				MALSR		MISSED APPROACH: Climb to 3900 direct HETIP and hold, continue climb-in-hold to 3900.	
<div><div><div>⚠</div></div><div>Circling Rwy 15, 33 NA at night. For uncompensated Baro-VNAV systems, LNAV/VNAV NA below -16°C or above 54°C. For inop ALS, increase LNAV/VNAV all Cats visibility to 1½ SM. **RVR 1800 authorized with use of FD or AP or HUD to DA.</div></div>				<div><div><div>MALS</div></div><div><div><div><div></div></div></div><div><div><div></div></div></div></div></div>			
ATIS 119.85		CHATTANOOGA APP CON ★ 125.1 379.1		CHATTANOOGA TOWER ★ 118.3 (CTAF) 257.8		GND CON 121.7 348.6	
						CLNC DEL 120.95 348.6	
						UNICOM 122.95	



CHATTANOOGA, TENNESSEE
Amdt 1B 15JUN23

35°02'N-85°12'W

LOVELL FLD (CHA)
RNAV (GPS) RWY 2

CHATTANOOGA, TENNESSEE

AL-79 (FAA)

25219

WAAS CH 65605 W02A	APP CRS 022°	Rwy Ldg TDZE 683 Apt Elev 683
--	------------------------	---

RNAV (GPS) RWY 2

LOVELL FLD (CHA)

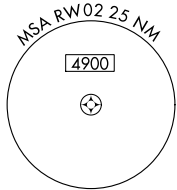
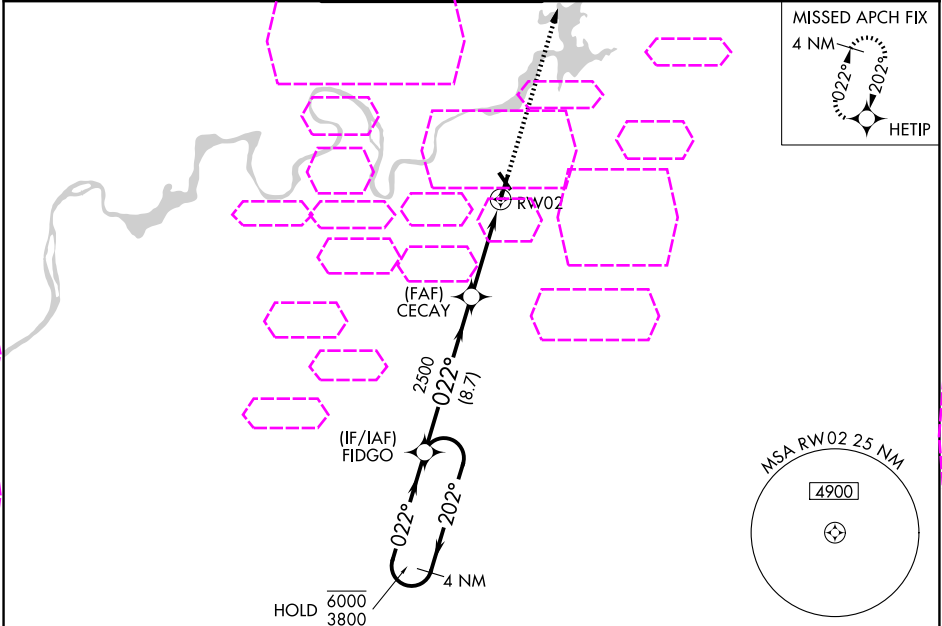
RNP APCH - GPS.

⚠ Circling Rwy 15, 33 NA at night. For uncompensated Baro-VNAV systems, LNAV/VNAV NA below -16°C or above 54°C. For inop ALS, increase LNAV/VNAV all Cats visibility to 1½ SM. **RVR 1800 authorized with use of FD or HUD to DA.

MALSR

MISSED APPROACH:
Climb to 3900 direct
HETIP and hold, continue
climb-in-hold to 3900.

ATIS 119.85	CHATTANOOGA APP CON ★ 125.1 379.1	CHATTANOOGA TOWER ★ 118.3 (CTAF) 0 257.8	GND CON 121.7 348.6	CLNC DEL 120.95 348.6	UNICOM 122.95
-----------------------	---	--	-------------------------------	---------------------------------	-------------------------



4 NM Holding Pattern

VGSI and RNAV glidepath not coincident (VGSI Angle 3.00/TCH 71).

3900 HETIP

FIDGO

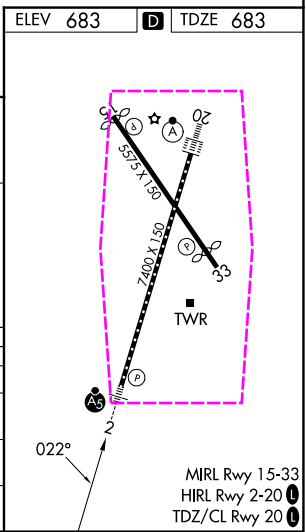
CECAV

RWY 02

GP 3.00° TCH 51

8.7 NM 3.9 NM 1.5 NM

CATEGORY	A	B	C	D
LPV DA**		883/24	200 (200-½)	
LNAV/VNAV DA		1197/55	514 (600-1)	
LNAV MDA	1240/24	557 (600-½)	1240/60	557 (600-1¼)
CIRCLING	1300-1 617 (700-1)	1340-1 657 (700-1)	1500-2½ 817 (900-2½)	1580-3 897 (900-3)



CHATTANOOGA, TENNESSEE
Amdt 1B 15JUN23

35°02'N-85°12'W

LOVELL FLD (CHA)

RNAV (GPS) RWY 2

SE-1, 07 AUG 2025 to 04 SEP 2025

SE-1, 07 AUG 2025 to 04 SEP 2025