

CHATTANOOGA, TENNESSEE

AL-79 (FAA)

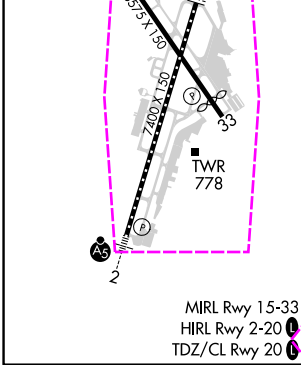
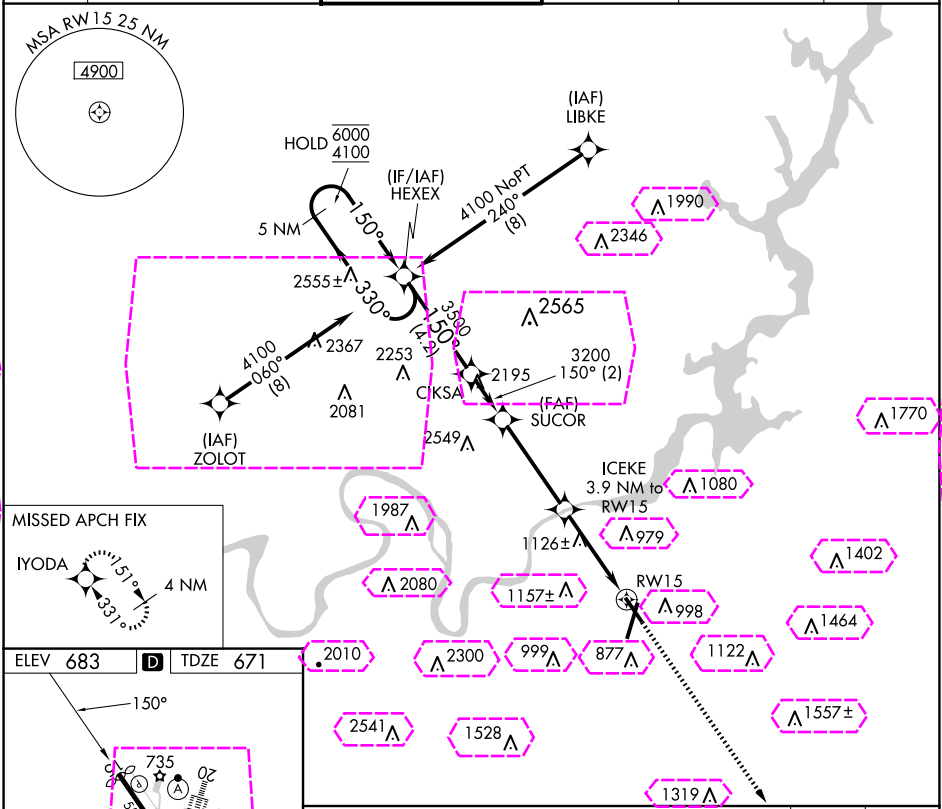
23278

APP CRS	Rwy Idg	5469
150°	TDZE	671
	Apt Elev	683

RNAV (GPS) RWY 15

LOVELL FLD (CHA)

RNP APCH - GPS.				MISSED APPROACH: Climb to 3300 direct IYODA and hold.	
Straight-In Rwy 15 NA at night, Circling Rwy 15, 33 NA at night. Rwy 15 helicopter visibility reduction below 1 SM NA.					
ATIS	CHATTANOOGA APP CON	CHATTANOOGA TOWER	GND CON	CLNC DEL	UNICOM
119.85	125.1 379.1	118.3 (CTAF) 257.8	121.7 348.6	120.95 348.6	122.95



5 NM Holding Pattern				3300	IYODA
HEXEX					
6000 ← 330°					
4100 → 150°					
150°					
3500					
SUCOR					
3200					
3.00° TCH 45					
1960					
ICEKE 3.9 NM to RW15					
RW15					
4.2 NM				3.9 NM	3.9 NM
CATEGORY	A	B	C	D	
LNAV MDA	1380-1	709 (700-1)	1380-2	709 (700-2)	
CIRCLING	1380-1	697 (700-1)	1480-2¼ 797 (800-2¼)	1580-3 897 (900-3)	

CHATTANOOGA, TENNESSEE
Amdt 1A 15JUN23

35°02'N-85°12'W

LOVELL FLD (CHA)

RNAV (GPS) RWY 15

SE-1, 10 JUL 2025 to 07 AUG 2025

SE-1, 10 JUL 2025 to 07 AUG 2025

CHATTANOOGA, TENNESSEE

AL-79 (FAA)

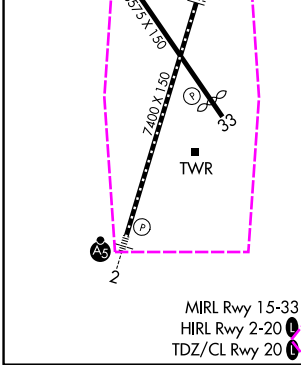
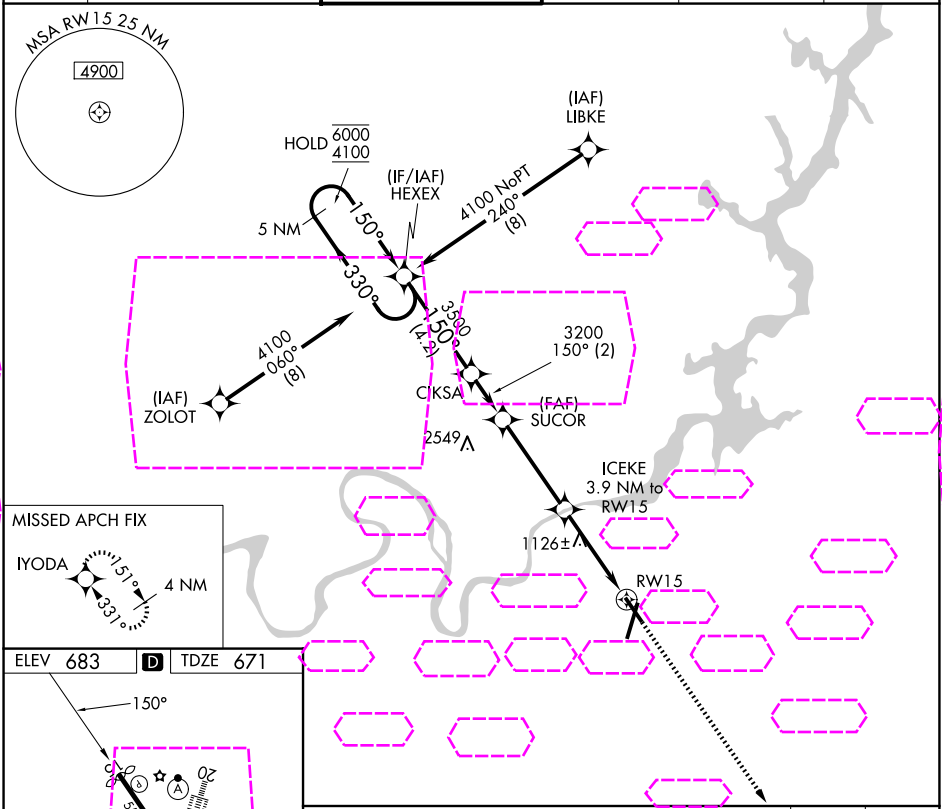
25219

APP CRS	Rwy Ldg	5469
150°	TDZE	671
	Apt Elev	683

RNAV (GPS) RWY 15

LOVELL FLD (CHA)

RNP APCH - GPS.				MISSED APPROACH: Climb to 3300 direct IYODA and hold.	
Straight-In Rwy 15 NA at night, Circling Rwy 15, 33 NA at night. Rwy 15 helicopter visibility reduction below 1 SM NA.					
ATIS	CHATTANOOGA APP CON	CHATTANOOGA TOWER	GND CON	CLNC DEL	UNICOM
119.85	125.1 379.1	118.3 (CTAF) 257.8	121.7 348.6	120.95 348.6	122.95



5 NM Holding Pattern				3300	IYODA
HEXEX					
CIKSA					
SUCOR					
ICEKE				3.9 NM to RW15	
RW15					
TCH 45					
3.00°					
1960					
4.2 NM				2 NM	3.9 NM
CATEGORY	A	B	C	D	
LNAV MDA	1380-1	709 (700-1)	1380-2	709 (700-2)	
CIRCLING	1380-1	697 (700-1)	1480-2¼ 797 (800-2¼)	1580-3 897 (900-3)	

CHATTANOOGA, TENNESSEE
Amdt 1A 15JUN23

35°02'N-85°12'W

RNAV (GPS) RWY 15

SE-1, 07 AUG 2025 to 04 SEP 2025

SE-1, 07 AUG 2025 to 04 SEP 2025