

CHATTANOOGA, TENNESSEE

AL-79 (FAA)

25051

LOC I-CGW 108.3	APP CRS 022°	Rwy Idg 7100 TDZE 683 Apt Elev 683
---------------------------	------------------------	---

ILS or LOC RWY 2

LOVELL FLD (CHA)

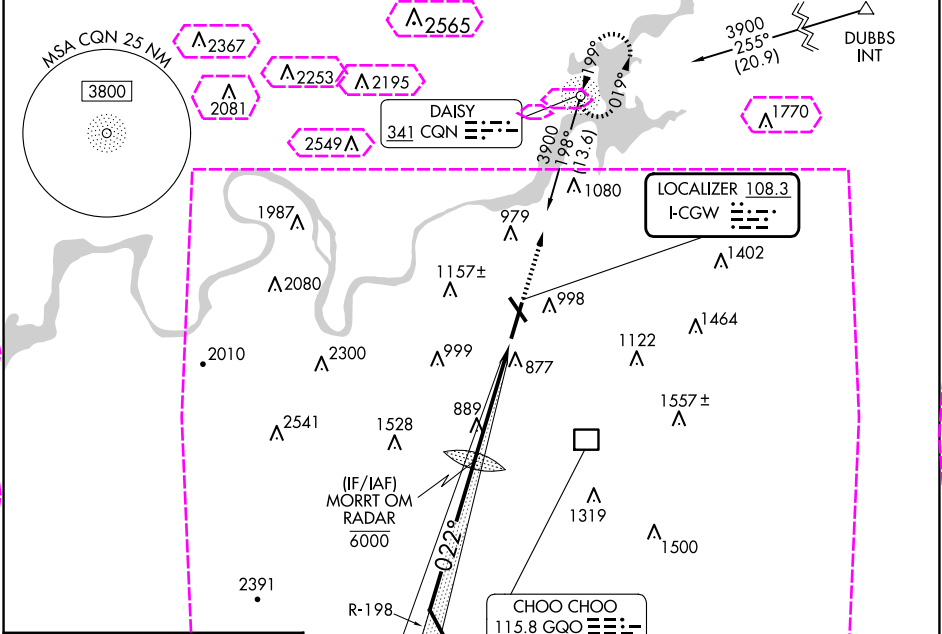
ADF required. RADAR required for procedure entry.

MALSR

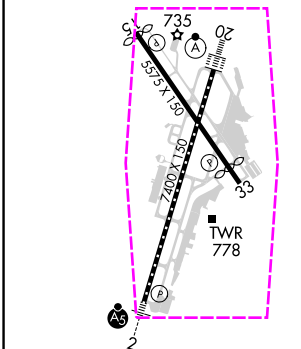
MISSED APPROACH: Climb to 3700 direct CGN NDB and hold, continue climb-in-hold to 3700.

⚠ Circling Rwy 15, 33 N at night.

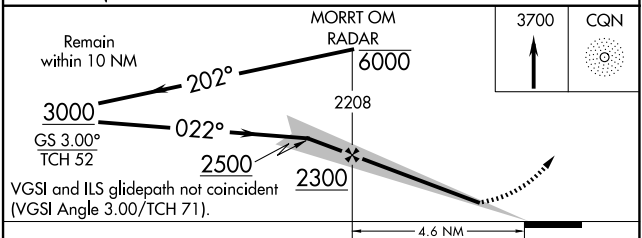
ATIS 119.85	CHATTANOOGA APP CON ★ 125.1 379.1	CHATTANOOGA TOWER ★ 118.3 (CTAF) 257.8	GND CON 121.7 348.6	CLNC DEL 120.95 348.6	UNICOM 122.95
-----------------------	---	--	-------------------------------	---------------------------------	-------------------------



ELEV 683	D TDZE 683
----------	-------------------



FAF to MAP 4.6 NM					
Knots	60	90	120	150	180
Min:Sec	4:36	3:04	2:18	1:50	1:32



CATEGORY	A	B	C	D
S-ILS 2	883/24 200 (200-1/2)			
S-LOC 2	1140/24	457 (500-1/2)	1140/45	457 (500-7/8)
CIRCLING	1300-1 617 (700-1)	1340-1 657 (700-1)	1500-2 1/2 817 (900-2 1/2)	1580-3 897 (900-3)

CHATTANOOGA, TENNESSEE
Amdt 8 15JUN23

35°02'N-85°12'W

LOVELL FLD (CHA)
ILS or LOC RWY 2

CHATTANOOGA, TENNESSEE

AL-79 (FAA)

25219

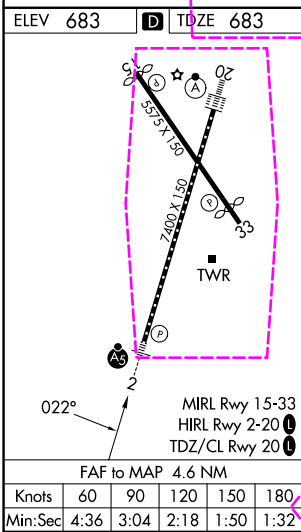
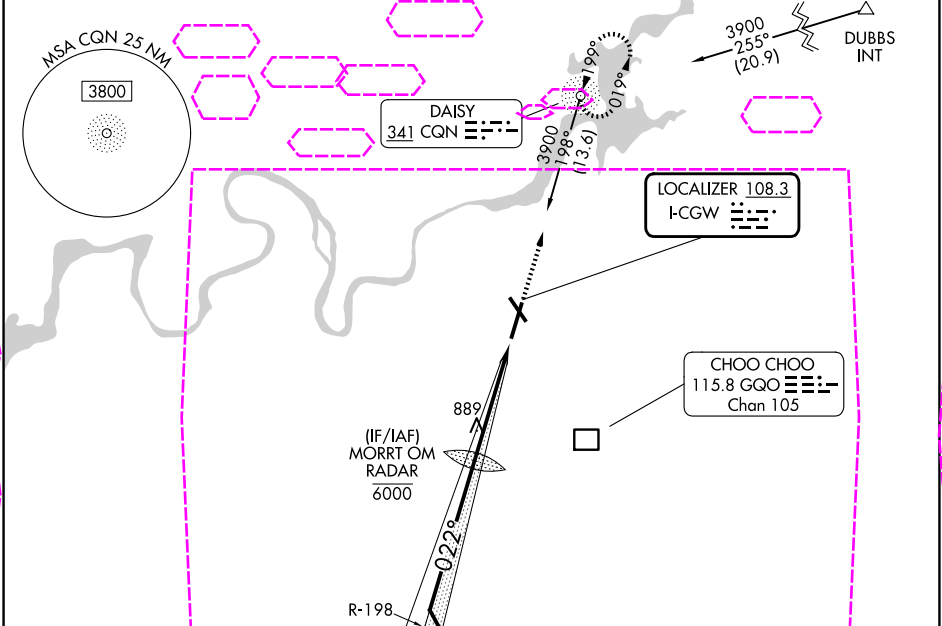
LOC I-CGW 108.3	APP CRS 022°	Rwy Ldg TDZE Apt Elev 7100 683 683
---------------------------	------------------------	--

ILS or LOC RWY 2

LOVELL FLD (CHA)

ADF required. RADAR required for procedure entry.		MALSR	MISSED APPROACH: Climb to 3700 direct CGN NDB and hold, continue climb-in-hold to 3700.
Circling Rwy 15, 33 NA at night.			

ATIS 119.85	CHATTANOOGA APP CON ★ 125.1 379.1	CHATTANOOGA TOWER ★ 118.3 (CTAF) 257.8	GND CON 121.7 348.6	CLNC DEL 120.95 348.6	UNICOM 122.95
-----------------------	---	--	-------------------------------	---------------------------------	-------------------------



Remain within 10 NM		MORRT OM RADAR 6000		3700	CGN
3000		2208			
GS 3.00° TCH 52		2500			
2300		4.6 NM			
VGSI and ILS glidepath not coincident (VGSI Angle 3.00/TCH 71).					
CATEGORY	A	B	C	D	
S-ILS 2	883/24		200 (200-½)		
S-LOC 2	1140/24 457 (500-½)		1140/45 457 (500-¾)		
CIRCLING	1300-1 617 (700-1)	1340-1 657 (700-1)	1500-2½ 817 (900-2½)	1580-3 897 (900-3)	

CHATTANOOGA, TENNESSEE
Amdt 8 15JUN23

35°02'N-85°12'W

LOVELL FLD (CHA)
ILS or LOC RWY 2

SE-1, 07 AUG 2025 to 04 SEP 2025

SE-1, 07 AUG 2025 to 04 SEP 2025