

CASPER, WYOMING

AL-72 (FAA)

24361

VOR/DME DDY	APP CRS	Rwy Idg
116.2	203°	10165
Chan 109	TDZE	5330
	Apt Elev	5344

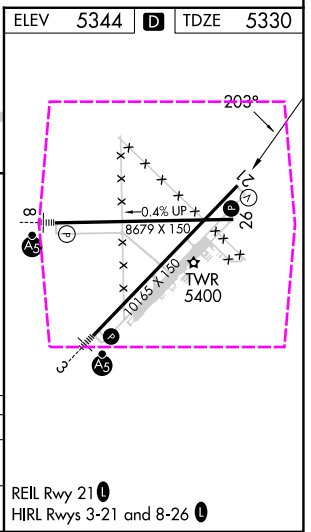
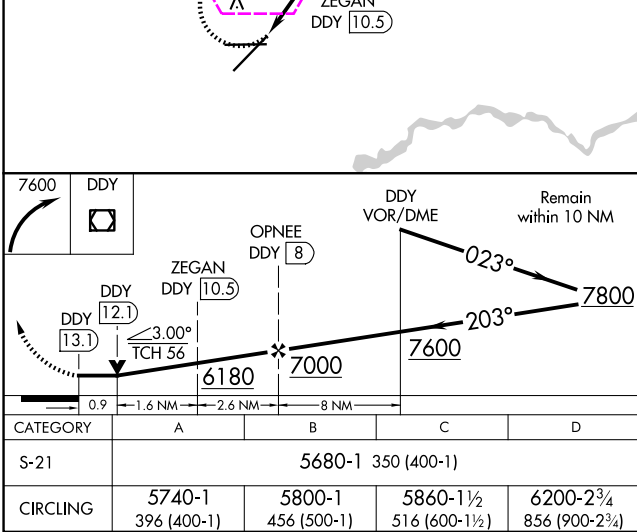
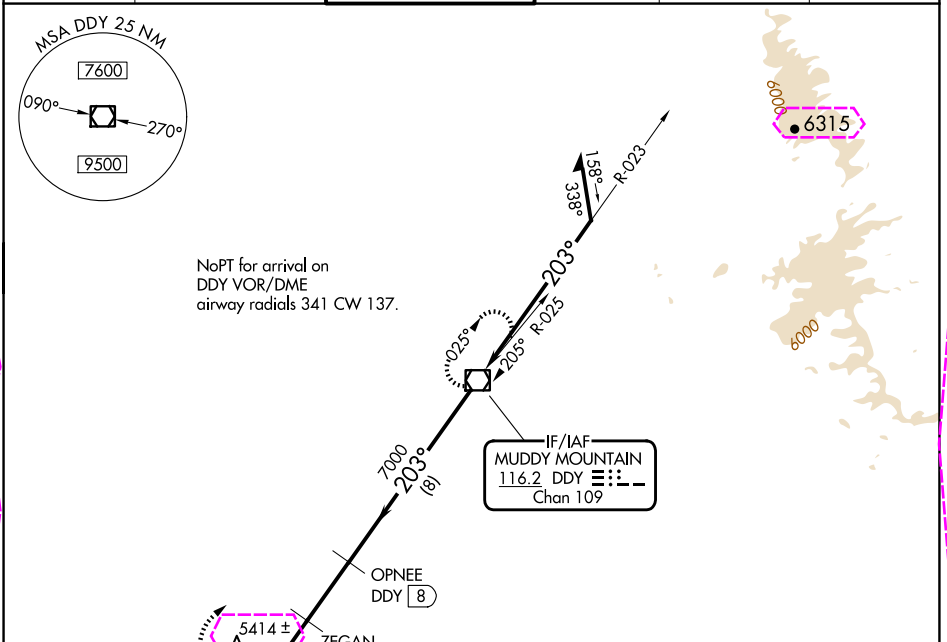
VOR/DME RWY 21

CASPER/NATRONA COUNTY INTL (CPR)

V VDP NA with Douglas altimeter setting. When local altimeter setting not received, use Douglas altimeter setting and increase all MDAs 180 feet, increase S-21 visibility C/D ½ SM, Circling Cat C ½ SM and Cat D ¼ SM.

MISSED APPROACH: Climbing right turn to 7600 direct DDY VOR/DME and hold.

ATIS	CASPER APP CON *	CASPER TOWER *	GND CON	CLNC DEL	UNICOM
126.15	120.65 354.1	118.3 (CTAF) 0 257.8	121.9	121.9 257.8	122.95



CASPER, WYOMING
Amdt 9B 25MAR21

42°54'N-106°28'W

CASPER/NATRONA COUNTY INTL (CPR)
VOR/DME RWY 21

NW-1, 10 JUL 2025 to 07 AUG 2025

NW-1, 10 JUL 2025 to 07 AUG 2025

VOR/DME DDY 116.2 Chan 109	APP CRS 203°	Rwy Ldg 10165 TDZE 5330 Apt Elev 5344
--	------------------------	--

VOR/DME RWY 21
CASPER/NATRONA COUNTY INTL (CPR)

A VDP NA with Douglas altimeter setting. When local altimeter setting not received, use Douglas altimeter setting and increase all MDAs 180 feet, increase S-21 visibility Cats C/D ½ SM, Circling Cat C ½ SM and Cat D ¼ SM.

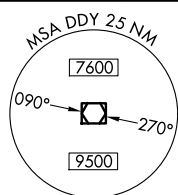
MISSED APPROACH: Climbing right turn to 7600 direct DDY VOR/DME and hold.

ATIS
126-15

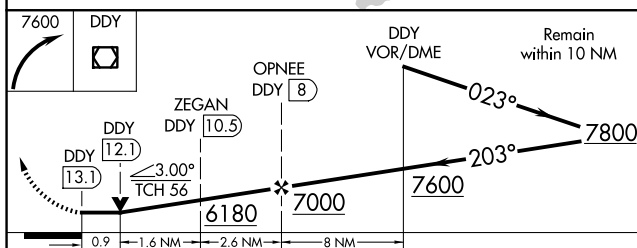
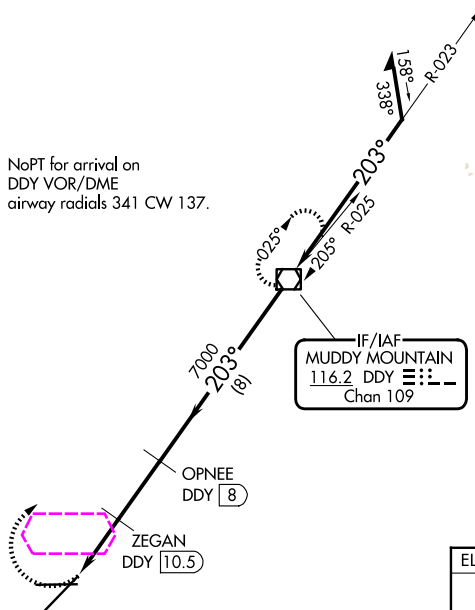
CASPER APP CON★
120.65 354.1

CASPER TOWER ★
118.3 (CTAF) **L** 257.8

GND CON
121.9

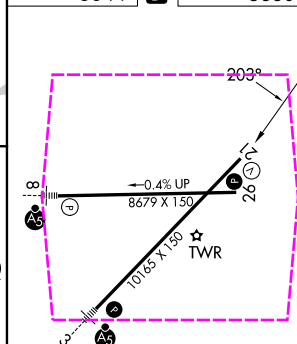
CLNC DEL
121.9 257.8UNICOM
122.95

NoPT for arrival on
DDY VOR/DME
airway radials 341 CW 137.



CATEGORY	A	B	C	D
S-21	5680-1 350 (400-1)			
CIRCLING	5740-1 396 (400-1)	5800-1 456 (500-1)	5860-1½ 516 (600-1½)	6200-2¾ 856 (900-2¾)

ELEV	5344	D	TDZE	5330
------	------	----------	------	------



REIL Rwy 21 **L**
HIRL Rwy 3-21 and 8-26 **L**

CASPER, WYOMING
Amdt 9B 25MAR21

42°54'N-106°28'W

CASPER/NATRONA COUNTY INTL (CPR)
VOR/DME RWY 21

NW-1, 07 AUG 2025 to 04 SEP 2025

NW-1, 07 AUG 2025 to 04 SEP 2025