

CASPER, WYOMING

AL-72 (FAA)

24361

WAAS CH 86306 W08A	APP CRS 077°	Rwy Idg 8679 TDZE 5344 Apt Elev 5344
--	------------------------	---

RNAV (GPS) RWY 8

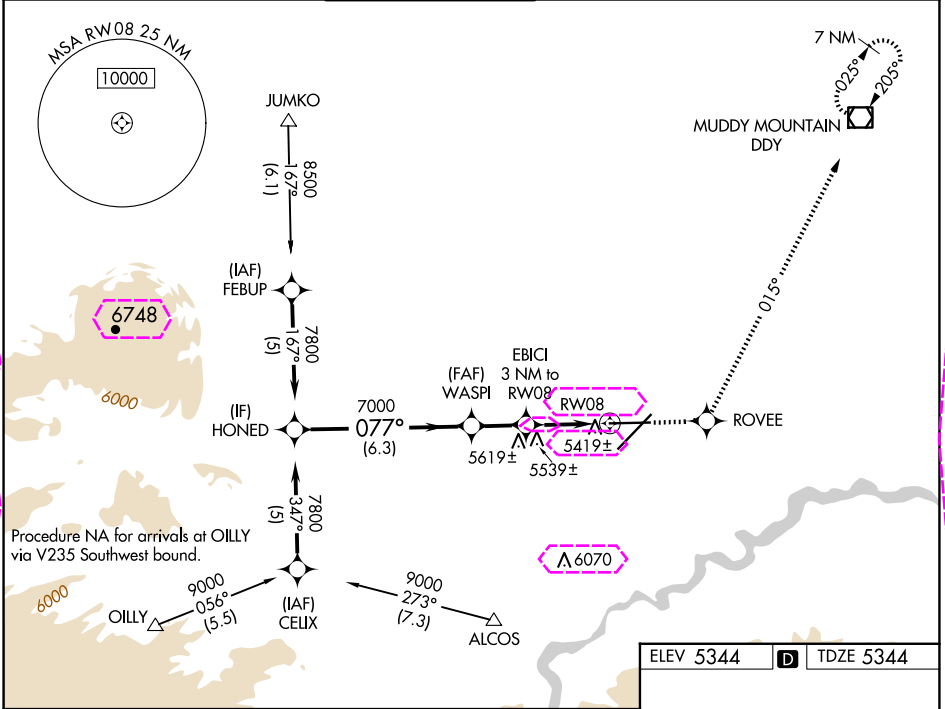
CASPER/NATRONA COUNTY INTL (CPR)

⚠ For uncompensated Baro-VNAV systems, LNAV/VNAV NA below -25°C (-13°F) or above 38°C (100°F).
DME/DME RNP-0.3 NA.

MALSR

MISSED APPROACH: Climb to 7700 direct ROVEE and via track 015° to DDY VOR/DME and hold.

ATIS 126.15	CASPER APP CON * 120.65 354.1	CASPER TOWER * 118.3 (CTAF) 0 257.8	GND CON 121.9	CLNC DEL 121.9 257.8	UNICOM 122.95
-----------------------	---	---	-------------------------	--------------------------------	-------------------------



VGSi and RNAV glidepath not coincident (VGSi Angle 3.00 / TCH 52).				
Procedure	HONED	WASPI	EBICI	DDY
Turn NA	7800	7000	3 NM to RW08	tr 015°
GP 3.00°				
TCH 55				
*LNAV only				
6.3 NM 2 NM 1.7 NM 1.3 NM				
CATEGORY	A	B	C	D
LPV DA	5594/24 250 (300-½)			
LNAV/VNAV DA	5689/40 345 (400-¾)			
LNAV MDA	5800/24	456 (500-½)	5800/40 456 (500-¾)	5800/50 456 (500-1)
CIRCLING	5800-1	456 (500-1)	5860-1½ 516 (600-1½)	6200-2¾ 856 (900-2¾)

ELEV 5344 **D** TDZE 5344

REIL Rwy 21 **1**
HIRL Rwy 3-21 and 8-26 **1**

NW-1, 10 JUL 2025 to 07 AUG 2025

NW-1, 10 JUL 2025 to 07 AUG 2025

CASPER, WYOMING

AL-72 (FAA)

25219

WAAS CH 86306 W08A	APP CRS 077°	Rwy Ldg 8679 TDZE 5344 Apt Elev 5344
--	------------------------	---

RNAV (GPS) RWY 8

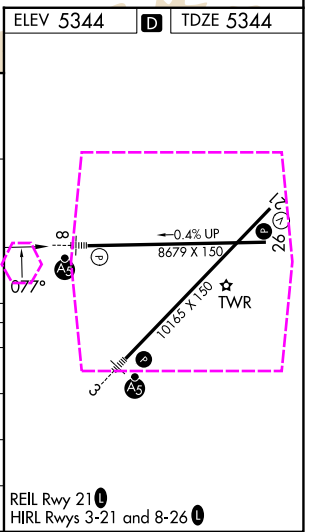
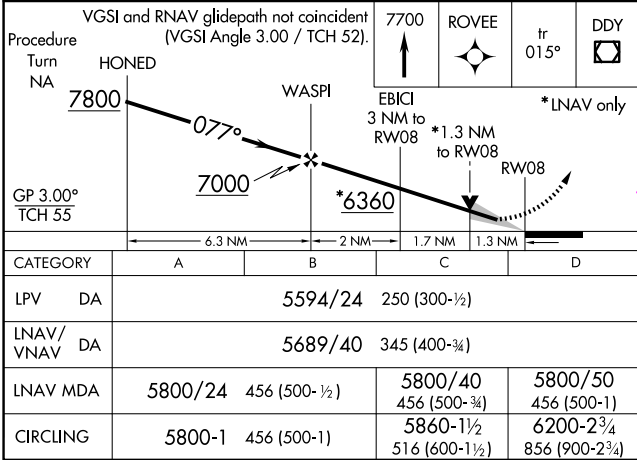
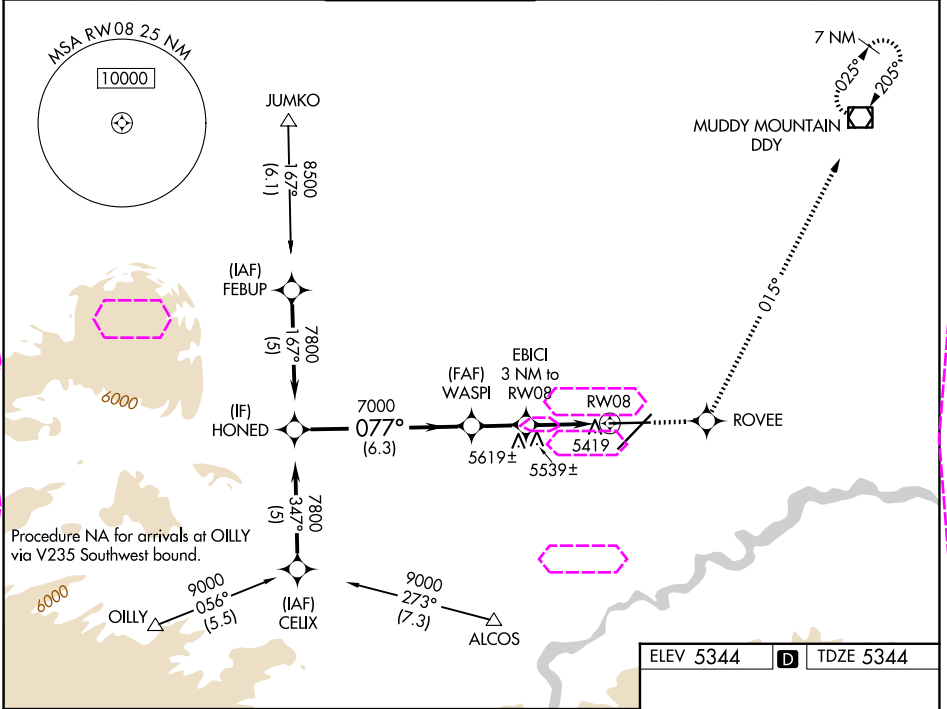
CASPER/NATRONA COUNTY INTL (CPR)

⚠ For uncompensated Baro-VNAV systems, LNAV/VNAV NA below -25°C (-13°F) or above 38°C (100°F).
DME/DME RNP-0.3 NA.

MALSR

MISSED APPROACH: Climb to 7700 direct ROVEE and via track 015° to DDY VOR/DME and hold.

ATIS 126.15	CASPER APP CON * 120.65 354.1	CASPER TOWER * 118.3 (CTAF) 0 257.8	GND CON 121.9	CLNC DEL 121.9 257.8	UNICOM 122.95
-----------------------	---	---	-------------------------	--------------------------------	-------------------------



CASPER, WYOMING
Amdt 1B 25MAR21

42°54'N-106°28'W

CASPER/NATRONA COUNTY INTL (CPR) RNAV (GPS) RWY 8