

CASPER, WYOMING

AL-72 (FAA)

24361

WAAS CH 73006 W03A	APP CRS 032°	Rwy Idg 10165 TDZE 5328 Apt Elev 5344
--	------------------------	--

RNAV (GPS) RWY 3

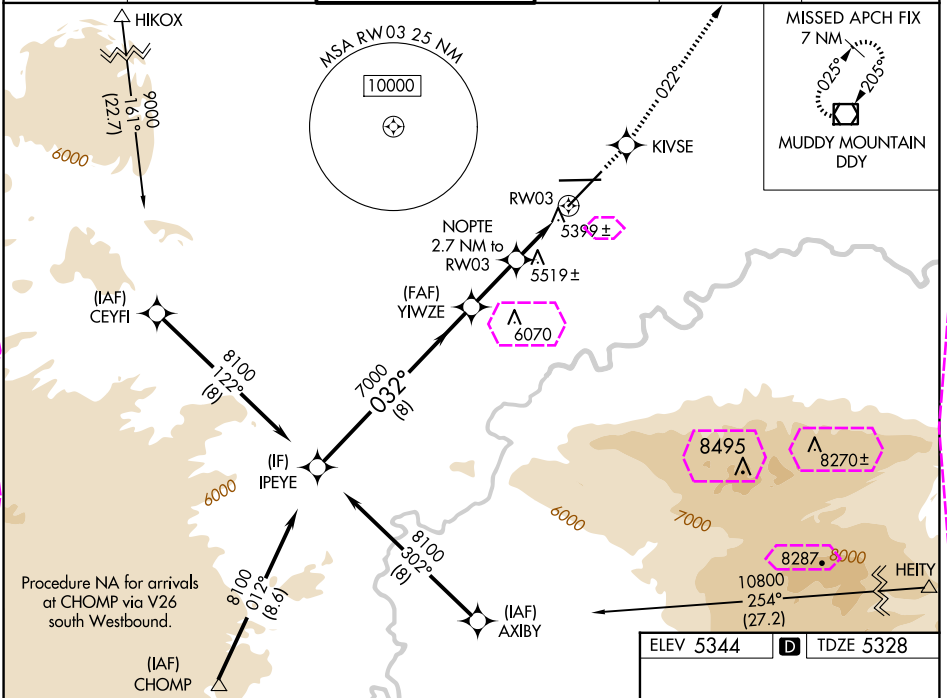
CASPER/NATRONA COUNTY INTL (CPR)

⚠ For inoperative MALSR, increase LPV all Cats visibility to 1 mile.
⚠ For uncompensated Baro-VNAV systems, LNAV/VNAV NA below -25°C (-13°F) or above 38°C (100°F).
DME/DME RNP-0.3 NA.

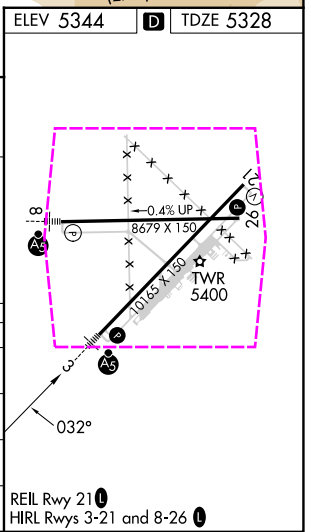
MALSR

MISSED APPROACH: Climb to 7500
direct KIVSE and via track 022° to
DDY VOR/DME and hold.

ATIS 126.15	CASPER APP CON * 120.65 354.1	CASPER TOWER * 118.3 (CTAF) 0 257.8	GND CON 121.9	CLNC DEL 121.9 257.8	UNICOM 122.95
-----------------------	---	---	-------------------------	--------------------------------	-------------------------



Procedure Turn NA	IPEYE	<u>8100</u>	032°	7000	YIWZE	NOPT 2.7 NM to RW03	*1.3 NM to RW03	RW03	*6240	7500	KIVSE	tr 022°	DDY	*LNAV only
GP 3.00° TCH 52		8 NM		2.3 NM		1.4 NM		1.3 NM						
CATEGORY	A		B		C		D							
LPV DA	5643/24 315 (300-½)													
LNAV/ VNAV DA	5691/40 363 (400-¾)													
LNAV MDA	5780/24		452 (500-½)		5780/40 452 (500-¾)		5780/50 452 (500-1)							
CIRCLING	5780-1 436 (500-1)		5800-1 456 (500-1)		5860-1½ 516 (600-1½)		6200-2¾ 856 (900-2¾)							



CASPER, WYOMING
Amdt 1B 25MAR21

42°54'N-106°28'W

CASPER/NATRONA COUNTY INTL (CPR) RNAV (GPS) RWY 3

NW-1, 10 JUL 2025 to 07 AUG 2025

NW-1, 10 JUL 2025 to 07 AUG 2025

CASPER, WYOMING

AL-72 (FAA)

25219

WAAS CH 73006 W03A	APP CRS 032°	Rwy Ldg TDZE 5328 Apt Elev 5344
--	------------------------	---

RNAV (GPS) RWY 3

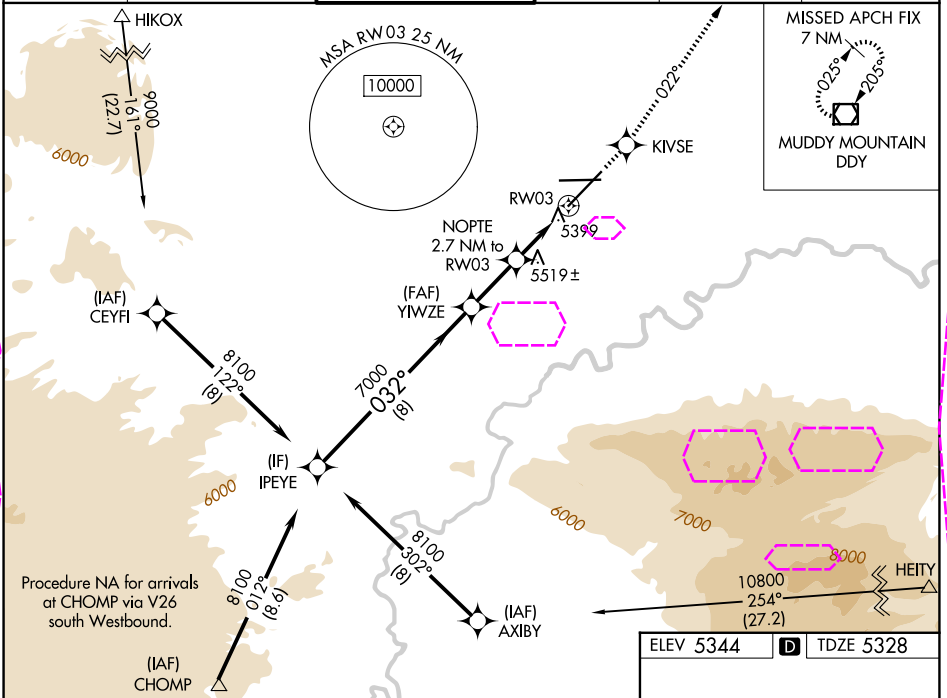
CASPER/NATRONA COUNTY INTL (CPR)

⚠ For inoperative MALSR, increase LPV all Cats visibility to 1 mile.
⚠ For uncompensated Baro-VNAV systems, LNAV/VNAV NA below -25°C (-13°F) or above 38°C (100°F).
DME/DME RNP-0.3 NA.

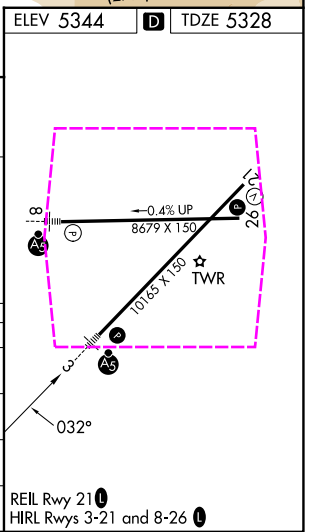
MALSR

MISSED APPROACH: Climb to 7500
direct KIVSE and via track 022° to
DDY VOR/DME and hold.

ATIS 126.15	CASPER APP CON * 120.65 354.1	CASPER TOWER * 118.3 (CTAF) 0 257.8	GND CON 121.9	CLNC DEL 121.9 257.8	UNICOM 122.95
-----------------------	---	---	-------------------------	--------------------------------	-------------------------



Procedure Turn NA	IPEYE	<u>8100</u>	032°	<u>7000</u>	YIWZE	NOPT 2.7 NM to RW03	*1.3 NM to RW03	RW03	*6240	*LNAV only	<div><div>7500</div><div>↑</div></div>	<div><div>KIVSE</div><div>✱</div></div>	<div><div>tr</div><div>022°</div></div>	<div><div>DDY</div><div>◻</div></div>
<u>GP 3.00°</u> <u>TCH 52</u>														
		8 NM	2.3 NM	1.4 NM	1.3 NM									
CATEGORY	A	B	C	D										
LPV DA	5643/24 315 (300-½)													
LNAV/ VNAV DA	5691/40 363 (400-¾)													
LNAV MDA	5780/24	452 (500-½)	5780/40 452 (500-¾)	5780/50 452 (500-1)										
CIRCLING	5780-1 436 (500-1)	5800-1 456 (500-1)	5860-1½ 516 (600-1½)	6200-2¾ 856 (900-2¾)										



CASPER, WYOMING
Amdt 1B 25MAR21

42°54'N-106°28'W

CASPER/NATRONA COUNTY INTL (CPR)

RNAV (GPS) RWY 3

NW-1, 07 AUG 2025 to 04 SEP 2025

NW-1, 07 AUG 2025 to 04 SEP 2025