

CASPER, WYOMING

AL-72 (FAA)

24361

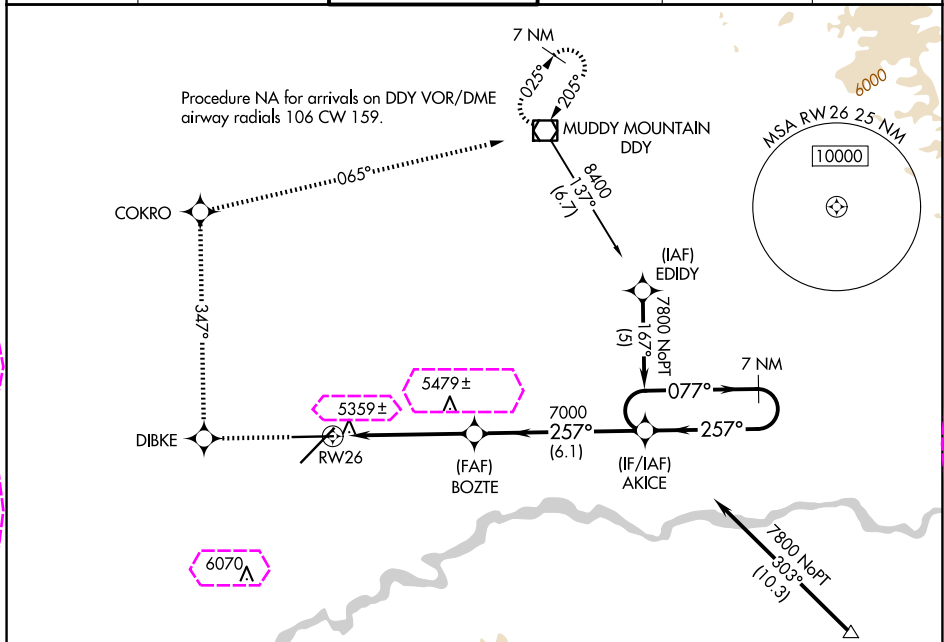
WAAS CH 78112 W26A	APP CRS 257°	Rwy Idg TDZE 5335 Apt Elev 5344
--	------------------------	---

RNAV (GPS) RWY 26

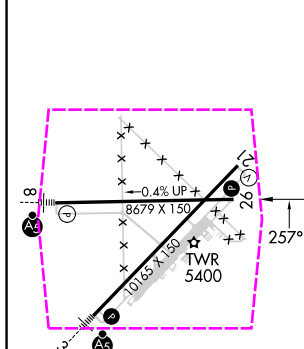
CASPER/NATRONA COUNTY INTL (CPR)

▼ For uncompensated Baro-VNAV systems, LNAV/VNAV ▲ NA below -25°C (-13°F) or above 38°C (100°F). DME/DME RNP-0.3 NA.	MISSED APPROACH: Climb to 8400 direct DIBKE and right turn via track 347° to COKRO and via track 065° to DDY VOR/DME and hold.
--	---

ATIS 126.15	CASPER APP CON * 120.65 354.1	CASPER TOWER * 118.3 (CTAF) 0 257.8	GND CON 121.9	CLNC DEL 121.9 257.8	UNICOM 122.95
-----------------------	---	---	-------------------------	--------------------------------	-------------------------



ELEV 5344	D	TDZE 5335
------------------	----------	------------------



REIL Rwy 21 **0**
HIRL Rwy 3-21 and 8-26 **0**

8400	DIBKE	COKRO	tr 065°	DDY	VGSI and RNAV glidepath not coincident (VGSI Angle 3.00/TCH 50).
8400	tr 347°	tr 065°	tr 065°	tr 065°	
*LNAV only					
*1.2 NM to RWY 26					
1.2 NM 3.9 NM 6.1 NM					
CATEGORY	A	B	C	D	
LPV DA	5585-1 250 (300-1)				
LNAV/VNAV DA	5629-1 294 (300-1)				
LNAV MDA	5740-1	405 (400-1)	5740-1½	405 (400-1½)	
CIRCLING	5780-1 436 (500-1)	5800-1 456 (500-1)	5860-1½ 516 (600-1½)	6200-2¾ 856 (900-2¾)	

CASPER, WYOMING
Amdt 1B 25MAR21

42°54'N-106°28'W

CASPER/NATRONA COUNTY INTL (CPR)

RNAV (GPS) RWY 26

CASPER, WYOMING

AL-72 (FAA)

25219

WAAS CH 78112 W26A	APP CRS 257°	Rwy Ldg TDZE 5335 Apt Elev 5344
--	------------------------	---

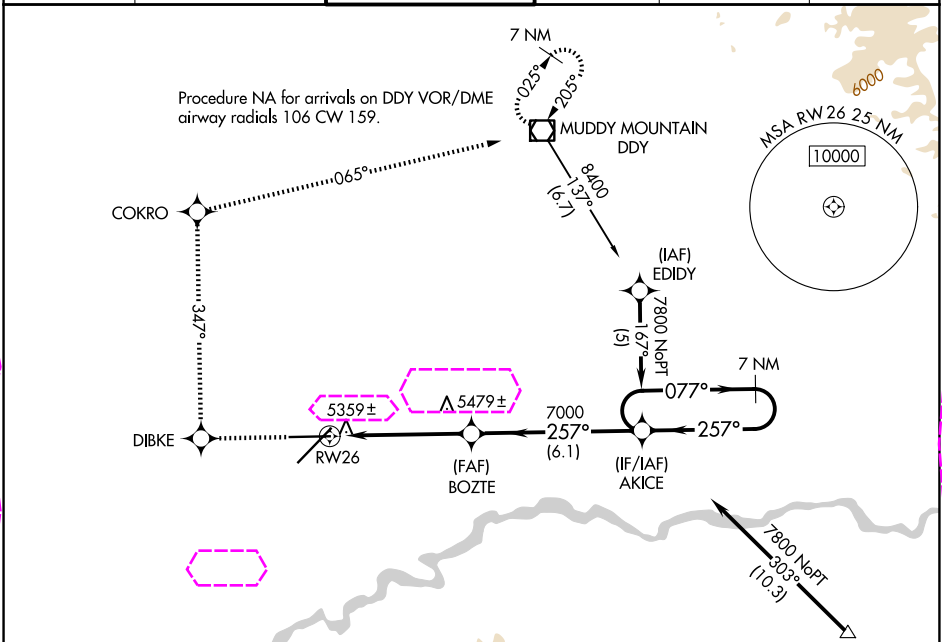
RNAV (GPS) RWY 26

CASPER/NATRONA COUNTY INTL (CPR)

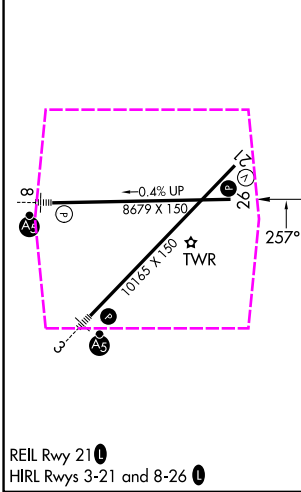
⚠ For uncompensated Baro-VNAV systems, LNAV/VNAV
NA below -25°C (-13°F) or above 38°C (100°F).
DME/DME RNP-0.3 NA.

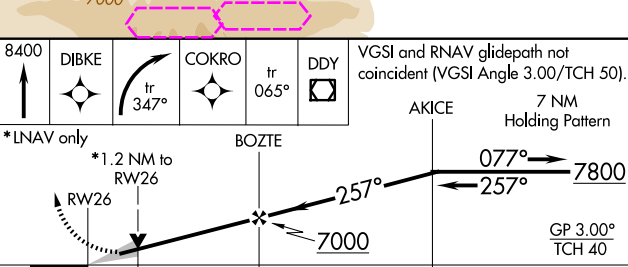
MISSED APPROACH: Climb to 8400 direct DIBKE and
right turn via track 347° to COKRO and via track 065°
to DDY VOR/DME and hold.

ATIS 126.15	CASPER APP CON * 120.65 354.1	CASPER TOWER * 118.3 (CTAF) 0 257.8	GND CON 121.9	CLNC DEL 121.9 257.8	UNICOM 122.95
-----------------------	---	---	-------------------------	--------------------------------	-------------------------



ELEV 5344	D	TDZE 5335
-----------	---	-----------



 <p>Diagram illustrating a flight path with various altitudes and distances:</p> <ul style="list-style-type: none">Initial altitude: 8400Altitude change: DIBKEAltitude change: COKROAltitude change: DDYAltitude change: VGSI and RNAV glidepath not coincident (VGSI Angle 3.00/TCH 50).Altitude change: AKICEAltitude change: 7 NM Holding PatternAltitude change: GP 3.00° TCH 40Altitude change: 7800Altitude change: 7000Altitude change: 5780-1Altitude change: 5800-1Altitude change: 5860-1½Altitude change: 6200-2¾ <p>Distances:</p> <ul style="list-style-type: none">1.2 NM3.9 NM6.1 NM				
*LNAV only				
BOZTE				
AKICE				
7 NM Holding Pattern				
GP 3.00° TCH 40				
1.2 NM 3.9 NM 6.1 NM				
CATEGORY	A	B	C	D
LPV DA	5585-1 250 (300-1)			
LNAV/VNAV DA	5629-1 294 (300-1)			
LNAV MDA	5740-1	405 (400-1)	5740-1¼	405 (400-1¼)
CIRCLING	5780-1 436 (500-1)	5800-1 456 (500-1)	5860-1½ 516 (600-1½)	6200-2¾ 856 (900-2¾)

CASPER, WYOMING
Amdt 1B 25MAR21

42°54'N-106°28'W

CASPER/NATRONA COUNTY INTL (CPR)

RNAV (GPS) RWY 26