

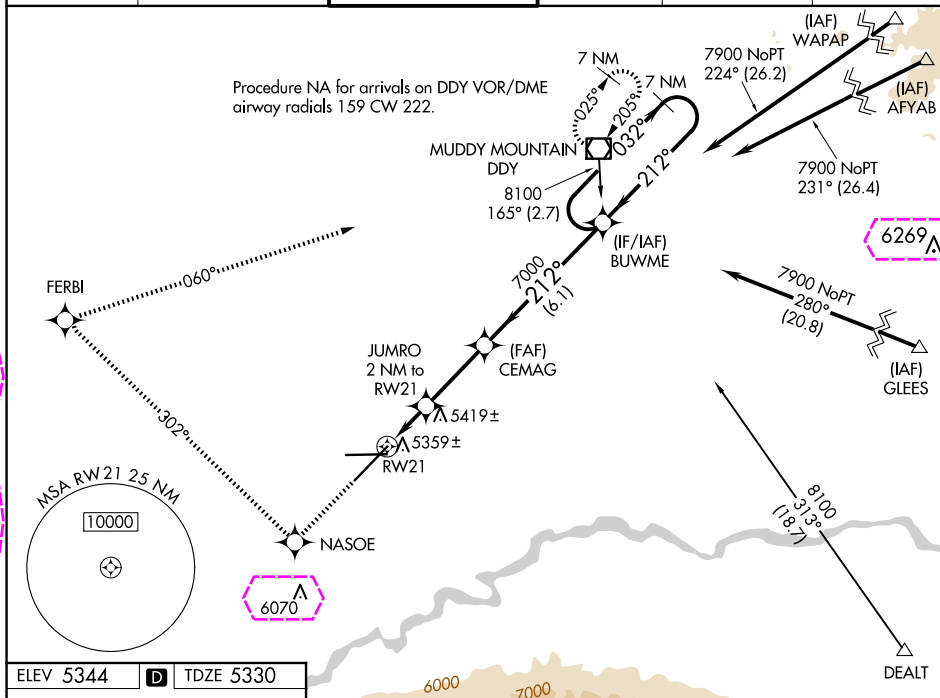
WAAS CH <b>63012</b> <b>W21A</b>	APP CRS <b>212°</b>	Rwy Idg <b>10165</b> TDZE <b>5330</b> Apt Elev <b>5344</b>
--	------------------------	--

RNAV (GPS) RWY 21  
CASPER/NATRONA COUNTY INTL (CPR)

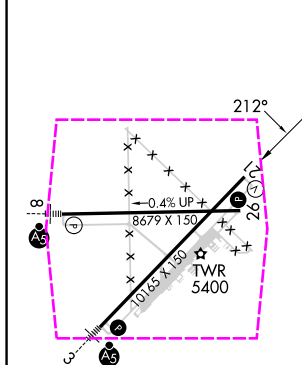
**T** For uncompensated Baro-VNAV systems, LNAV/VNAV  
**A** NA below -25°C (-13°F) or above 38°C (100°F).  
DME/DME RNP-0.3 NA.

**MISSED APPROACH:** Climb to 8100 direct NASOE and right turn via track 302° to FERBI and via track 060° to DDY VOR/DME and hold.

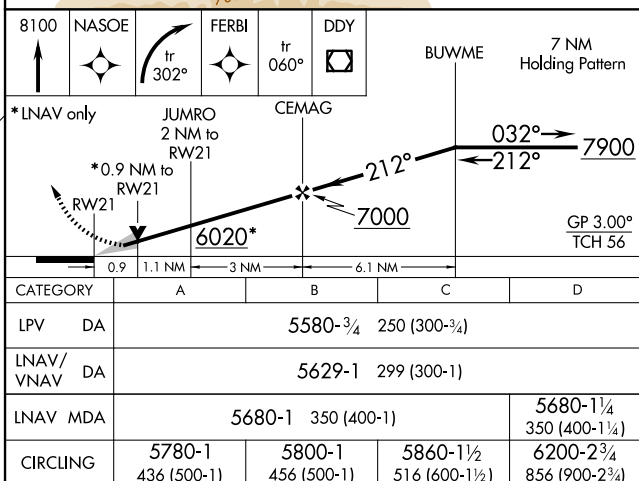
ATIS <b>126.15</b>	CASPER APP CON ★ <b>120.65 354.1</b>	CASPER TOWER ★ <b>118.3 (CTAF) 0 257.8</b>	GND CON <b>121.9</b>	CLNC DEL <b>121.9 257.8</b>	UNICOM <b>122.95</b>
-----------------------	---	---	-------------------------	--------------------------------	-------------------------



ELEV 5344	<b>D</b>	TDZE 5330
-----------	----------	-----------



REIL Rwy 21 **L**  
HIRL Rwy 3-21 and 8-26 **L**



CASPER, WYOMING  
Amdt 2A 25MAR21

CASPER/NATRONA COUNTY INTL (CPR)  
RNAV (GPS) RWY 21

42°54'N-106°28'W

CASPER, WYOMING

AL-72 (FAA)

25219

WAAS CH <b>63012</b> <b>W21A</b>	APP CRS <b>212°</b>	Rwy Ldg TDZE <b>5330</b> Apt Elev <b>5344</b>
--	------------------------	---

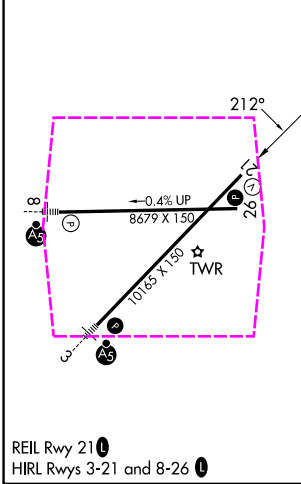
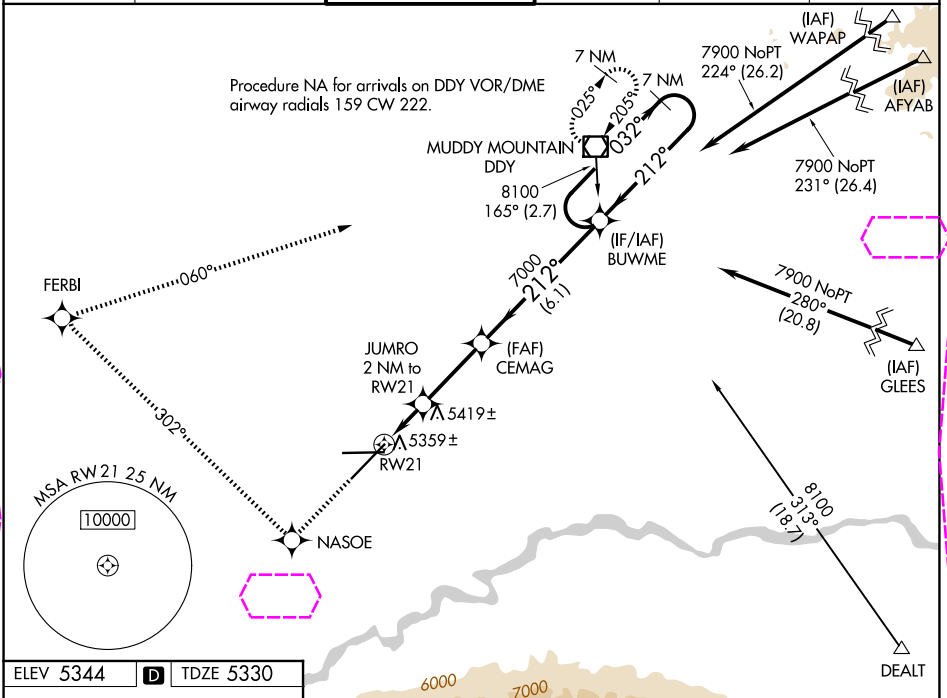
# RNAV (GPS) RWY 21

CASPER/NATRONA COUNTY INTL (CPR)

**⚠** For uncompensated Baro-VNAV systems, LNAV/VNAV NA below -25°C (-13°F) or above 38°C (100°F).  
**⚠** DME/DME RNP-0.3 NA.

**MISSED APPROACH:** Climb to 8100 direct NASOE and right turn via track 302° to FERBI and via track 060° to DDY VOR/DME and hold.

ATIS <b>126.15</b>	CASPER APP CON ★ <b>120.65 354.1</b>	CASPER TOWER ★ <b>118.3 (CTAF) 0 257.8</b>	GND CON <b>121.9</b>	CLNC DEL <b>121.9 257.8</b>	UNICOM <b>122.95</b>
-----------------------	---	---	-------------------------	--------------------------------	-------------------------



8100	NASOE	FERBI	DDY	tr 060°	7 NM Holding Pattern
* LNAV only					
JUMRO 2 NM to RW21					
* 0.9 NM to RW21					
6020*					
0.9 1.1 NM 3 NM 6.1 NM					
CATEGORY	A	B	C	D	
LPV DA	5580-3/4 250 (300-3/4)				
LNAV/VNAV DA	5629-1 299 (300-1)				
LNAV MDA	5680-1 350 (400-1)				5680-1 1/4 350 (400-1 1/4)
CIRCLING	5780-1 436 (500-1)	5800-1 456 (500-1)	5860-1 1/2 516 (600-1 1/2)	6200-2 3/4 856 (900-2 3/4)	

CASPER, WYOMING  
Amdt 2A 25MAR21

42°54'N-106°28'W

# RNAV (GPS) RWY 21

CASPER/NATRONA COUNTY INTL (CPR)

NW-1, 07 AUG 2025 to 04 SEP 2025

NW-1, 07 AUG 2025 to 04 SEP 2025