


LOC I-SYD <u>111.3</u>	APP CRS 032°	Rwy Idg 10165 TDZE 5328 Apt Elev 5344
----------------------------------	------------------------	------------------------------------------------------------------

ILS or LOC RWY 3
CASPER/NATRONA COUNTY INTL (CPR)

⚠ DME from DDY VOR/DME. Simultaneous reception of I-SYD and DDY DME required. When local altimeter setting not received, use Douglas altimeter setting and increase DA to 5697 feet and all MDA's 180 feet, increase S-ILS visibility all Cats ¼ SM and S-LOC visibility Cat B, C, D and Circling Cats B, C, D visibility ½ SM, increase MAMUE FIX MINIMUM Circling visibility Cat C ½ SM and Cat D ¼ SM. For inoperative MALSR when using Douglas altimeter setting increase S-ILS visibility all Cats to 1¼ mile. MAMUE FIX MINIMUMS: For inoperative MALSR, increase S-LOC visibility Cats C, and D to 1½ mile. #RVR 1800 authorized with use of FD or AP or HUD to DA.

MALSR  **MISSED APPROACH:**
Climb to 7500
then left turn direct
DDY VOR/DME
and hold.

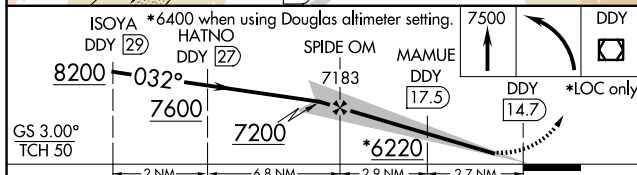
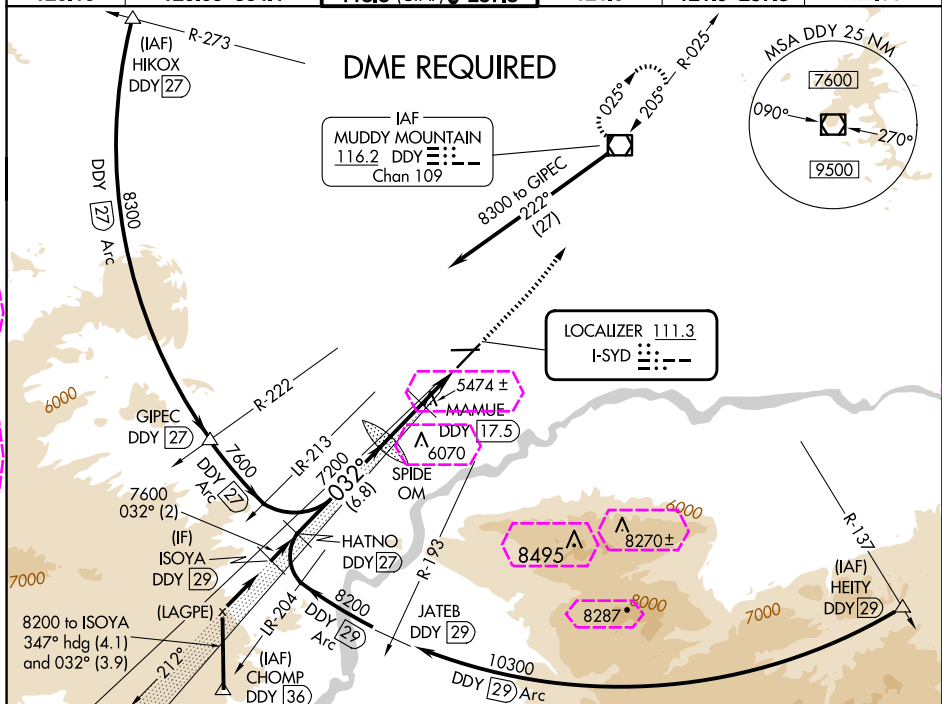
ATIS
126.15

CASPER APP CON 1
120.65 354.1

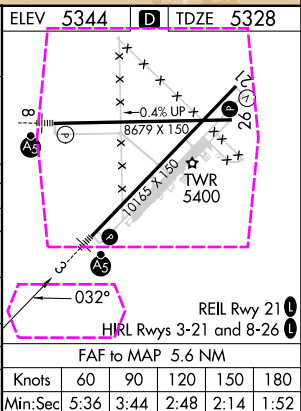
CASPER TOWER ★
118.3 (CTAF) 257.8

GND CON
121.9

CLNC DEL
121.9 257.8

UNICOM
122.95

CATEGORY	A	B	C	D
S-ILS 3	#5528/24 200 (200-½)			
S-LOC 3	6220/40	892 (900-¾)	6220-2	892 (900-2)
CIRCLING	6220-1¼	876 (900-1¼)	6220-2½ 876 (900-2½)	6220-2¾ 876 (900-2¾)
MAMUE FIX MINIMUMS				
S-LOC 3	5740/24	412 (400-½)	5740/40	412 (400-¾)
CIRCLING	5740-1 396 (400-1)	5800-1 456 (500-1)	5860-1½ 516 (600-½)	6200-2¾ 856 (900-2¾)



CASPER, WYOMING
Amdt 7B 25MAR21

CASPER/NATRONA COUNTY INTL (CPR)
ILS or LOC RWY 3

42°54'N-106°28'W

NW-1, 10 JUL 2025 to 07 AUG 2025

NW-1, 10 JUL 2025 to 07 AUG 2025

CASPER, WYOMING

AL-72 (FAA)

25219

LOC I-SYD 111.3	APP CRS 032°	Rwy Ldg 10165 TDZE 5328 Apt Elev 5344
---------------------------	------------------------	---------------------------------------------------------------------------

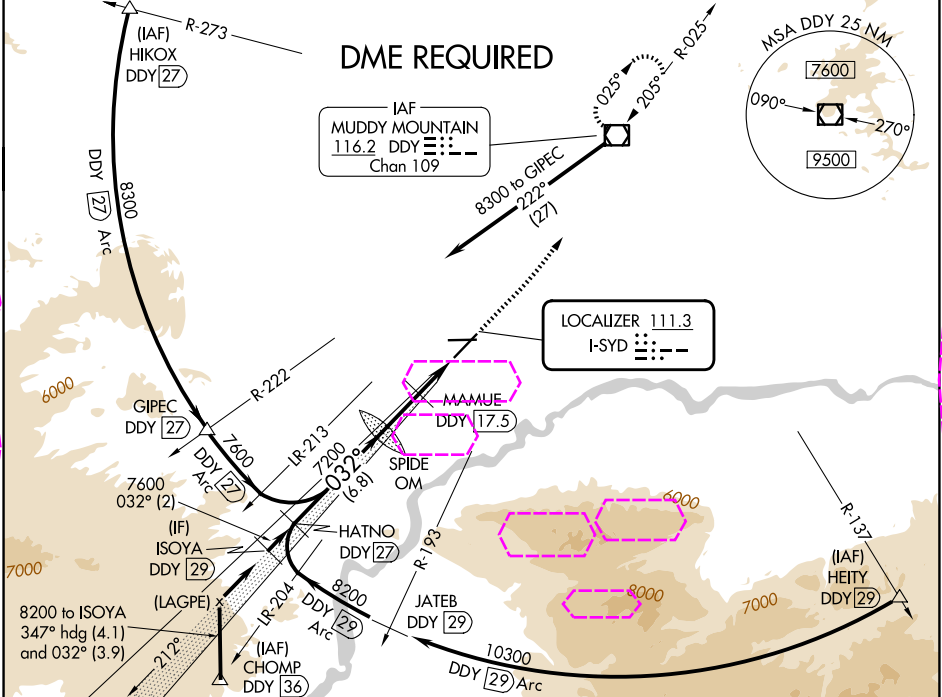
ILS or LOC RWY 3

CASPER/NATRONA COUNTY INTL (CPR)

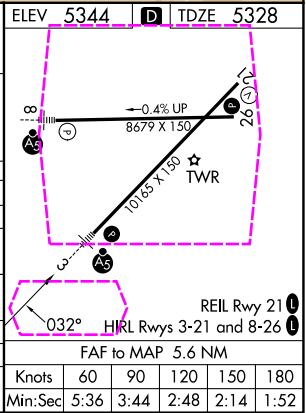
▼ DME from DDY VOR/DME. Simultaneous reception of I-SYD and DDY DME required. When local altimeter setting not received, use Douglas altimeter setting and increase DA to 5697 feet and all MDAs 180 feet, increase S-ILS visibility all Cats ½ SM and S-LOC visibility Cat B, C, D and Circling Cats B, C, D visibility ½ SM, increase MAMUE FIX MINIMUM Circling visibility Cat C ½ SM and Cat D ¼ SM. For inoperative MALSR when using Douglas altimeter setting increase S-ILS visibility all Cats to 1½ mile. MAMUE FIX MINIMUMS: For inoperative MALSR, increase S-LOC visibility Cats C, and D to 1½ mile. #RVR 1800 authorized with use of FD or AP or HUD to DA.

MALSR
MISSED APPROACH:
Climb to 7500
then left turn direct
DDY VOR/DME
and hold.

ATIS 126.15	CASPER APP CON ★ 120.65 354.1	CASPER TOWER ★ 118.3 (CTAF) 257.8	GND CON 121.9	CLNC DEL 121.9 257.8	UNICOM 122.95
-----------------------	-----------------------------------------	---------------------------------------------	-------------------------	--------------------------------	-------------------------



ISOYA DDY 29	*6400 when using Douglas altimeter setting.	7500	DDY	ELEV 5344	TDZE 5328
8200	032°	7600	7200	*6220	DDY 14.7
GS 3.00° TCH 50	2 NM	6.8 NM	2.9 NM	2.7 NM	
CATEGORY	A	B	C	D	
S-ILS 3	#5528/24 200 (200-½)				
S-LOC 3	6220/40	892 (900-¾)	6220-2	892 (900-2)	
CIRCLING	6220-1¼	876 (900-1¼)	6220-2½	876 (900-2½)	
MAMUE FIX MINIMUMS					
S-LOC 3	5740/24	412 (400-½)	5740/40	412 (400-¾)	
CIRCLING	5740-1	5800-1	5860-1½	6200-2¾	
	396 (400-1)	456 (500-1)	516 (600-1½)	856 (900-2¾)	



CASPER, WYOMING
Amdt 7B 25MAR21

42°54'N-106°28'W

CASPER/NATRONA COUNTY INTL (CPR)
ILS or LOC RWY 3

NW-1, 07 AUG 2025 to 04 SEP 2025

NW-1, 07 AUG 2025 to 04 SEP 2025