

BURLINGTON, VERMONT

AL-70 (FAA)

25107

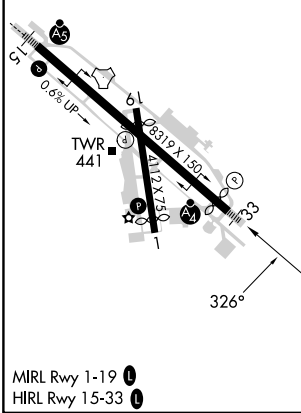
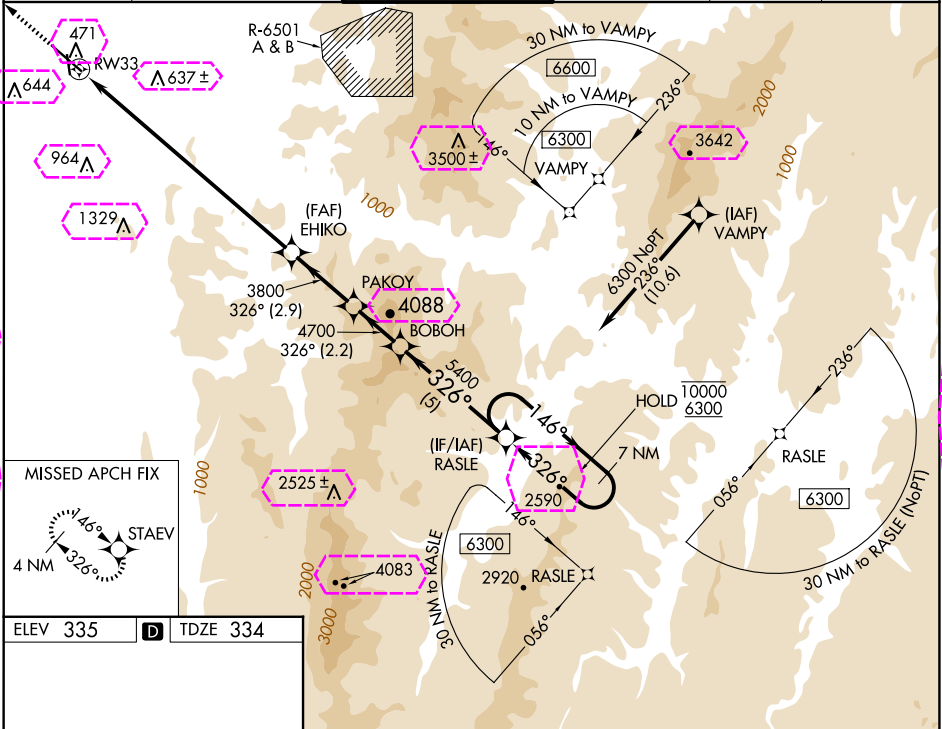
WAAS CH 65812 W33A	APP CRS 326°	Rwy Idg 7819 TDZE 334 Apt Elev 335
--	------------------------	---

RNAV (GPS) Z RWY 33

PATRICK LEAHY BURLINGTON INTL (BTV)

RNP APCH - GPS.	MALSF	MISSED APPROACH: Climb to 3000 direct STA EV and hold.
Rwy 33 helicopter visibility reduction below RVR 4000 NA. Inop table does not apply. For uncompensated Baro-VNAV systems, LNAV/VNAV NA below -25°C or above 37°C.		

ATIS 123.8 269.9	BURLINGTON APP CON * 121.1 278.8	BURLINGTON TOWER * 118.3 (CTAF) 0 257.8	GND CON 126.3 348.6	CLNC DEL 119.15	UNICOM 122.95
----------------------------	--	---	-------------------------------	---------------------------	-------------------------



ELEV 335	D	TDZE 334
MIRL Rwy 1-19 HIRL Rwy 15-33		
BURLINGTON, VERMONT Amdt 1 31OCT24		
PATRICK LEAHY BURLINGTON INTL (BTV) RNAV (GPS) Z RWY 33		

NE-1, 10 JUL 2025 to 07 AUG 2025

NE-1, 10 JUL 2025 to 07 AUG 2025

BURLINGTON, VERMONT

AL-70 (FAA)

25219

WAAS CH 65812 W33A	APP CRS 326°	Rwy Ldg 7819 TDZE 334 Apt Elev 335
--	------------------------	---

RNAV (GPS) Z RWY 33
PATRICK LEAHY BURLINGTON INTL (BTV)

RNP APCH - GPS.

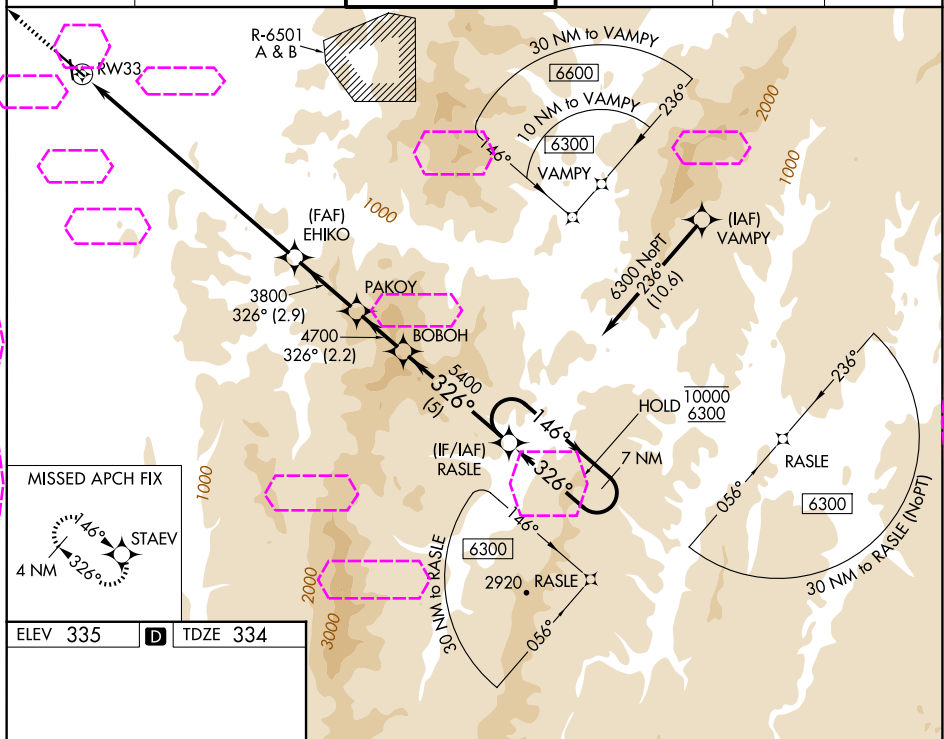
T Rwy 33 helicopter visibility reduction below RVR 4000 NA.
A Inop table does not apply. For uncompensated Baro-VNAV systems, LNAV/VNAV NA below -25°C or above 37°C.
✖ -9°C

MALSF



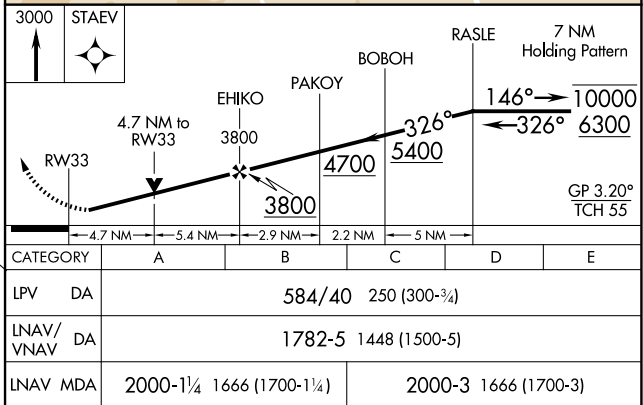
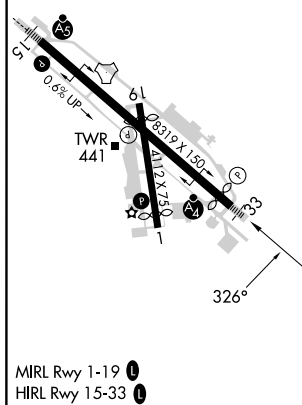
MISSED APPROACH: Climb to 3000 direct STAEV and hold.

ATIS 123.8 269.9	BURLINGTON APP CON ★ 121.1 278.8	BURLINGTON TOWER ★ 118.3 (CTAF) 0 257.8	GND CON 126.3 348.6	CLNC DEL 119.15	UNICOM 122.95
---------------------	-------------------------------------	--	------------------------	--------------------	------------------



ELEV 335	D	TDZE 334
----------	----------	----------

--	--



BURLINGTON, VERMONT

Amdt 1 31OCT24

PATRICK LEAHY BURLINGTON INTL (BTV)

44°28'N-73°09'W

RNAV (GPS) Z RWY 33

NE-1, 07 AUG 2025 to 04 SEP 2025.