




APP CRS	Rwy Idg	7819
311°	TDZE	334
	Apt Elev	335

RNAV (GPS) Y RWY 33
PATRICK LEAHY BURLINGTON INTL (BTV)

RNP APCH.

	Circling Rwy 1 NA at night.
	Rwy 33 helicopter visibility reduction below $\frac{3}{4}$ SM NA.
 -10°C	For inop ALS, increase LNAV Cat C visibility to RVR 6000.

MALSF



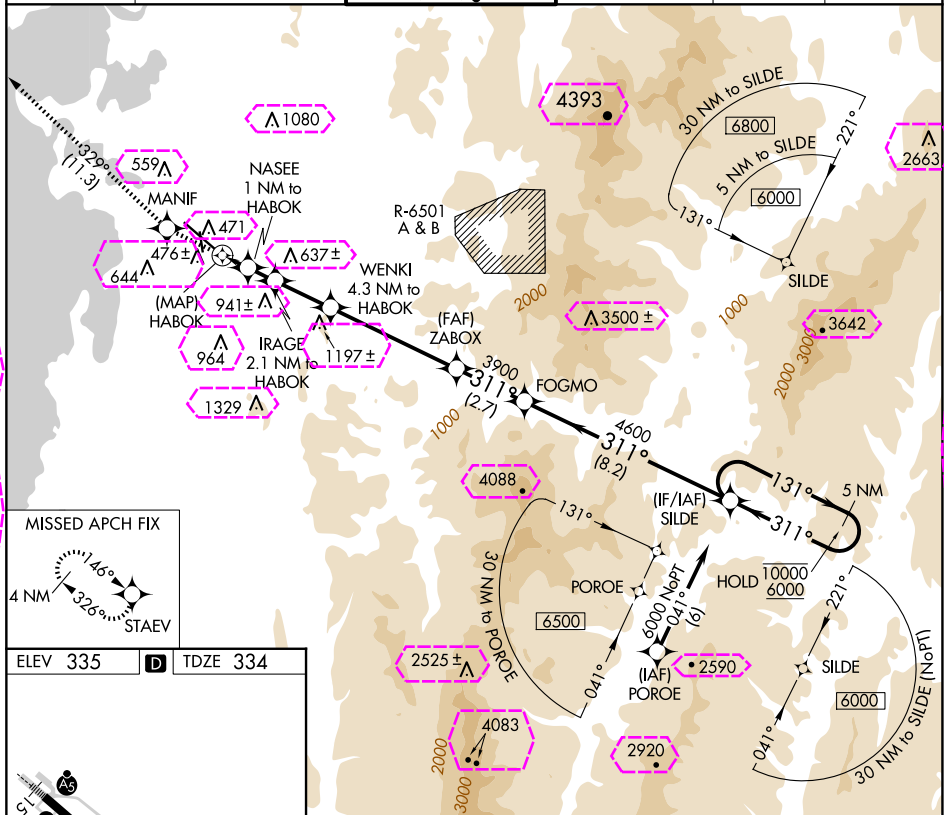
MISSED APPROACH: Climb to 3000 direct MANIF and on track 329° to STAEV and hold.

ATIS
123.8 269.9

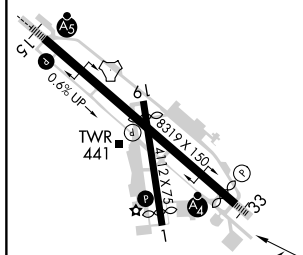
BURLINGTON APP CON ★
121.1 278.8

BURLINGTON TOWER ★
118.3 (CTAF)  257.8

	GND CON
126.3	348.6

CLNC DEL
119,15UNICOM
122.95

ELEV 335	D	TDZE 334
----------	----------	----------



MIRL Rwy 1-19 **L**
HIRL Rwy 15-33 **L**

BURLINGTON, VERMONT
Orig-C 26MAR20

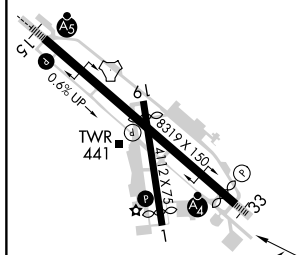
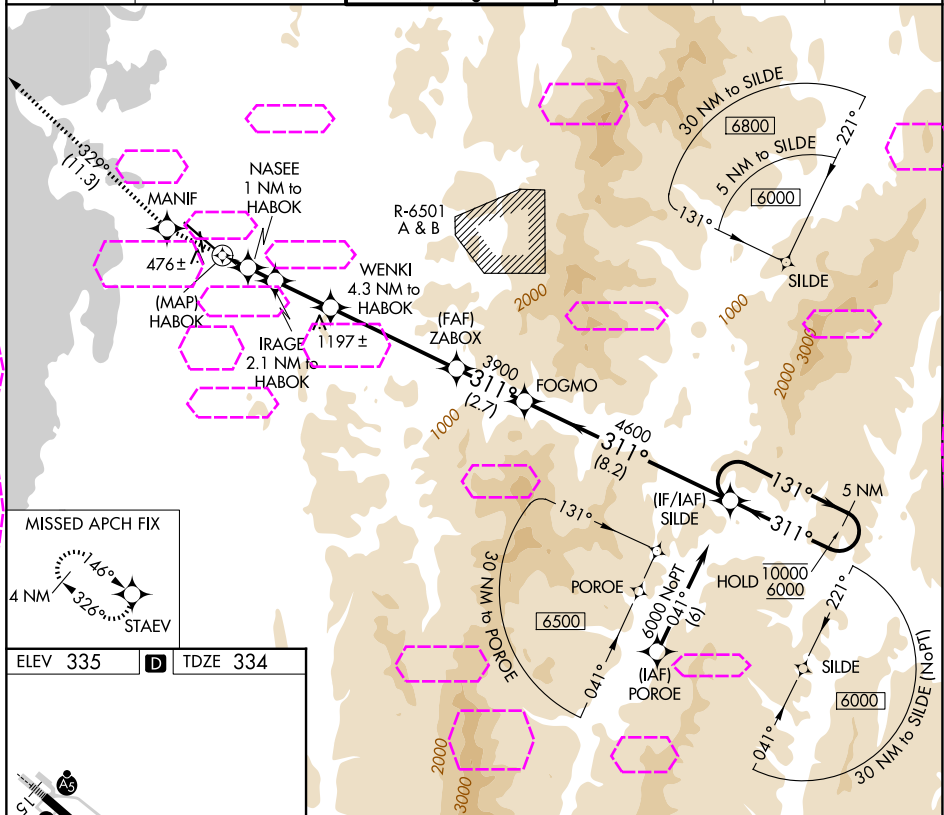
44°28'N-73°09'W

PATRICK LEAHY BURLINGTON INTL (BTV)
RNAV (GPS) Y RWY 33

NE-1, 10 JUL 2025 to 07 AUG 2025

RNAV (GPS) Y RWY 33
PATRICK LEAHY BURLINGTON INTL (BTV)

MISSED APPROACH: Climb to 3000 direct MANIF and on track 329° to STAEV and hold.

UNICOM
122.95

44°28'N-73°09'W

PATRICK LEAHY BURLINGTON INTL (BTV)
RNAV (GPS) Y RWY 33