

BURLINGTON, VERMONT

AL-70 (FAA)

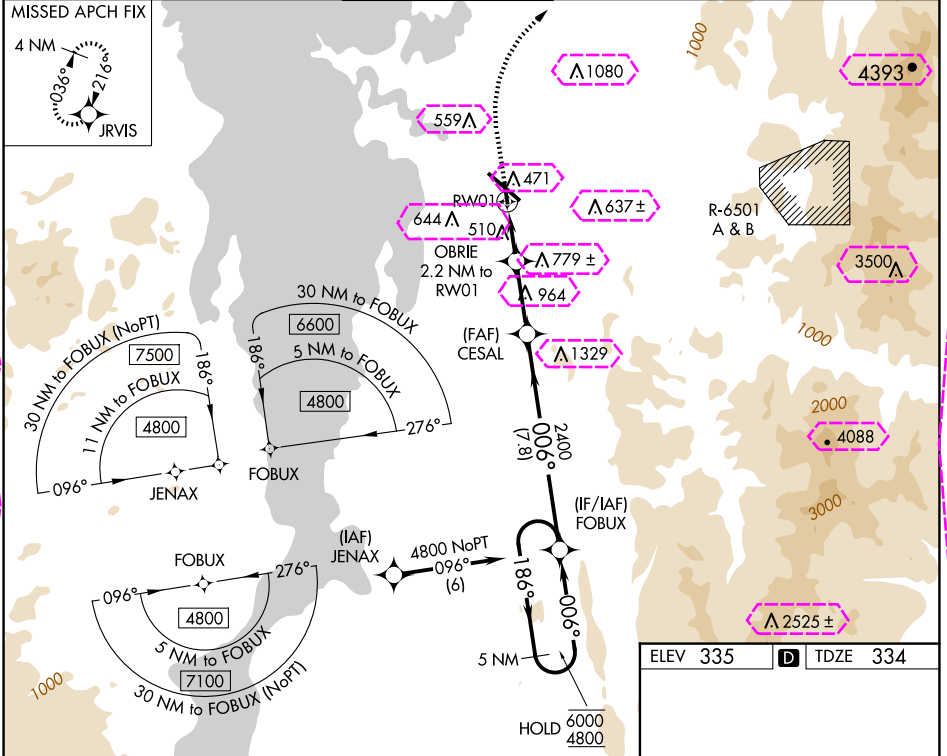
25107

WAAS CH <b>58044</b> <b>W01A</b>	APP CRS <b>006°</b>	Rwy Idg <b>3386</b> TDZE <b>334</b> Apt Elev <b>335</b>
----------------------------------------	------------------------	---------------------------------------------------------------

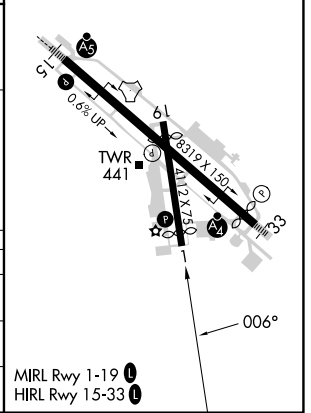
# RNAV (GPS) RWY 1

PATRICK LEAHY BURLINGTON INTL (BTV)

RNP APCH - GPS.		MISSED APPROACH: Climb to 900 then climbing right turn to 3500 direct JRVIS and hold, continue climb-in-hold to 3500.		
Rwy 1 helicopter visibility reduction below ¾ SM NA.				
ATIS <b>123.8 269.9</b>	BURLINGTON APP CON ★ <b>121.1 278.8</b>	BURLINGTON TOWER ★ <b>118.3 (CTAF) 0 257.8</b>	GND CON <b>126.3 348.6</b>	UNICOM <b>122.95</b>



5 NM Holding Pattern		VGSI and RNAV glidepath not coincident (VGSI Angle 4.00/TCH 27).		900	3500	JRVIS
FOBUX		CESAL		2400	1280	0.9 NM to RW01
GP 4.00° TCH 30		OBRIE 2.2 NM to RW01				
7.8 NM		2.6 NM		1.3 NM		
CATEGORY	A	B	C	D		
LPV DA	661-1	327 (400-1)	NA			
LNAV MDA	760-1	426 (500-1)	NA			
CIRCLING	840-1	860-1	NA			
	505 (600-1)	525 (600-1)				



BURLINGTON, VERMONT  
Amdt 1 19MAY22

44°28'N-73°09'W

PATRICK LEAHY BURLINGTON INTL (BTV)  
RNAV (GPS) RWY 1

BURLINGTON, VERMONT

AL-70 (FAA)

25219

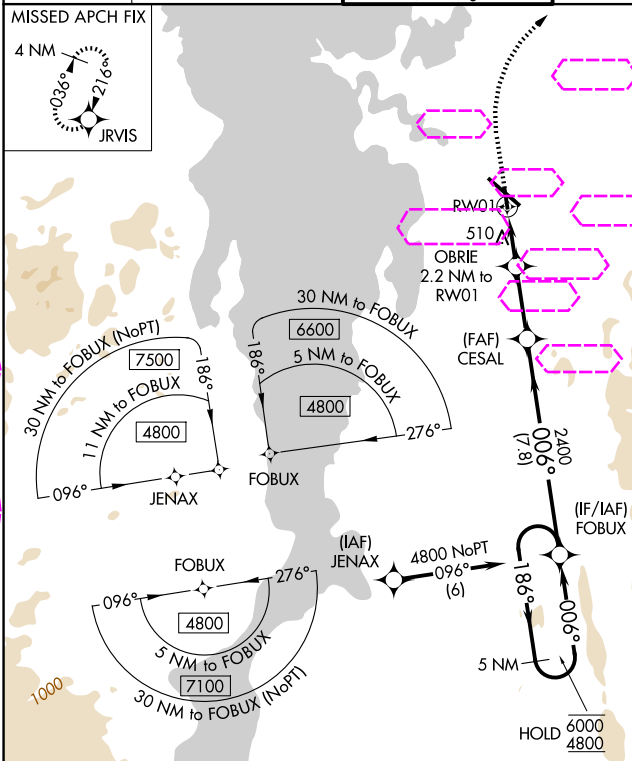
WAAS CH <b>58044</b> <b>W01A</b>	APP CRS <b>006°</b>	Rwy Ldg <b>3386</b> TDZE <b>334</b> Apt Elev <b>335</b>
----------------------------------------	------------------------	---------------------------------------------------------------

# RNAV (GPS) RWY 1

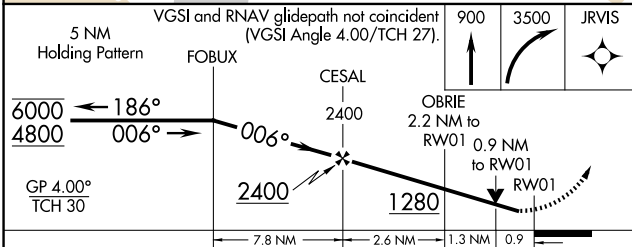
PATRICK LEAHY BURLINGTON INTL (BTV)

RNP APCH - GPS.	
Rwy 1 helicopter visibility reduction below 3/4 SM NA.	
ATIS <b>123.8 269.9</b>	BURLINGTON APP CON ★ <b>121.1 278.8</b>
BURLINGTON TOWER ★ <b>118.3 (CTAF) 0 257.8</b>	
GND CON <b>126.3 348.6</b>	CLNC DEL <b>119.15</b>
UNICOM <b>122.95</b>	

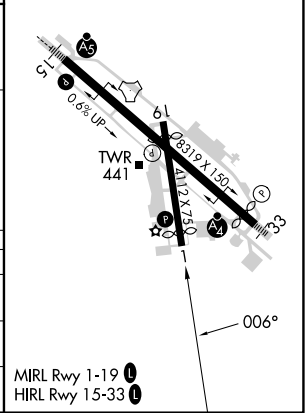
MISSED APPROACH: Climb to 900 then climbing right turn to 3500 direct JRVIS and hold, continue climb-in-hold to 3500.



ELEV 335	TDZE 334
----------	----------



CATEGORY	A	B	C	D
LPV DA	661-1	327 (400-1)	NA	
LNAV MDA	760-1	426 (500-1)	NA	
CIRCLING	840-1 505 (600-1)	860-1 525 (600-1)	NA	



BURLINGTON, VERMONT  
Amdt 1 19MAY22

44°28'N-73°09'W

PATRICK LEAHY BURLINGTON INTL (BTV)  
RNAV (GPS) RWY 1

NE-1, 07 AUG 2025 to 04 SEP 2025

NE-1, 07 AUG 2025 to 04 SEP 2025