

23222

VOR/DME BRL <b>111.4</b> Chan <b>51</b>	APP CRS <b>288°</b>	Rwy Idg <b>4850</b> TDZE <b>697</b> Apt Elev <b>698</b>
---	------------------------	--

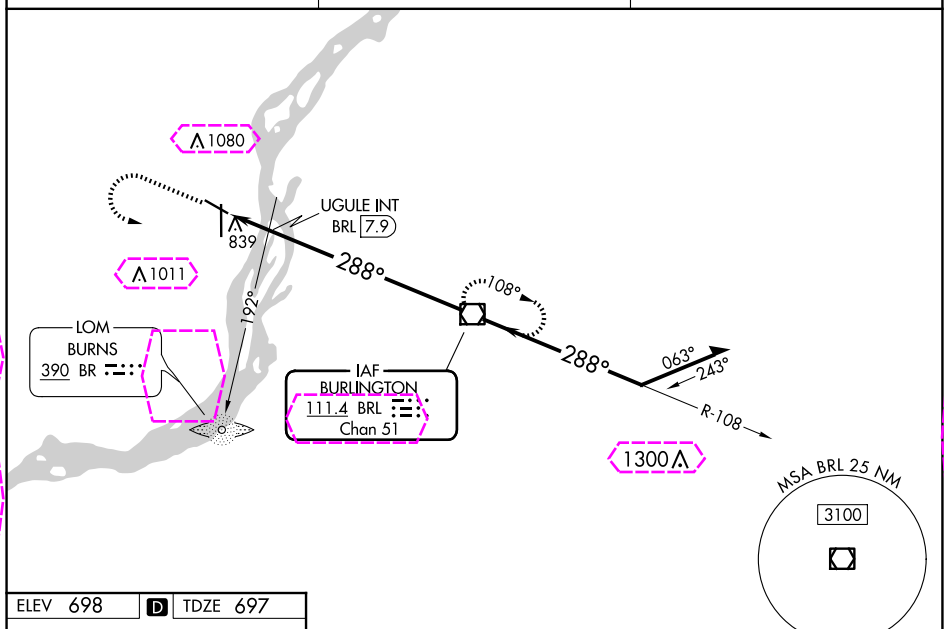
VOR RWY 30  
SOUTHEAST IOWA RGNL (BRL)

**T**  
**A** Rwy 30 helicopter visibility reduction below  $\frac{3}{4}$  SM NA.

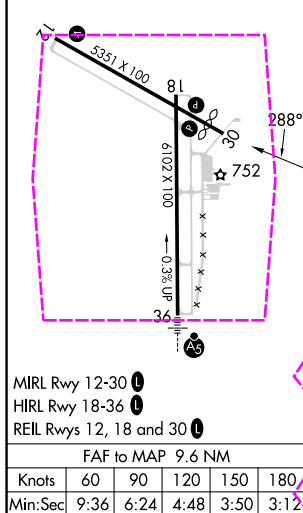
**MISSED APPROACH:** Climb to 2000 then climbing left turn to 3000 direct BRL VOR/DME and hold.

ASOS  
118.025

CHICAGO CENTER  
135.6 370.95

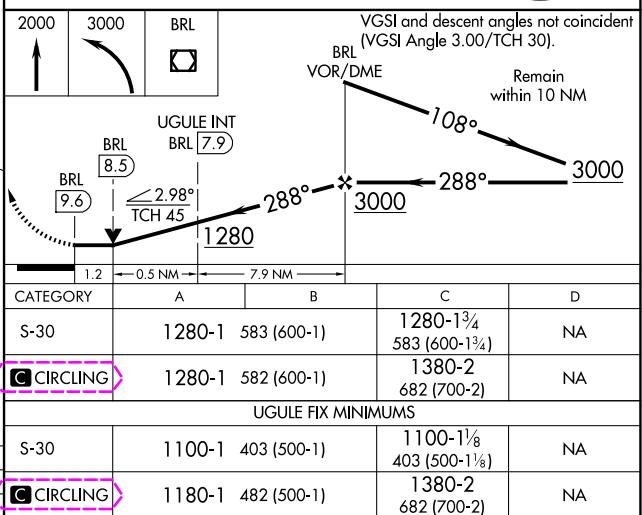
UNICOM  
123.0 (CTAF) **L**

ELEV 698	<b>D</b>	TDZE 697
----------	----------	----------

MIRL Rwy 12-30 **L**HIRL Rwy 18-36 **L**REIL Rwy's 12, 18 and 30 **L**

FAF to MAP 9.6 NM

Knots	60	90	120	150	180
Min:Sec	9:36	6:24	4:48	3:50	3:12



BURLINGTON, IOWA

Amdt 13D 20JUN19

SOUTHEAST IOWA REGION (BRL)

VOR RWY 30

40°47'N-91°08'W

BURLINGTON, IOWA

AL-69 (FAA)

25219

VOR/DME BRL	APP CRS	Rwy Ldg	4850
115.55	288°	TDZE	697
Chan 102(Y)		Apt Elev	698

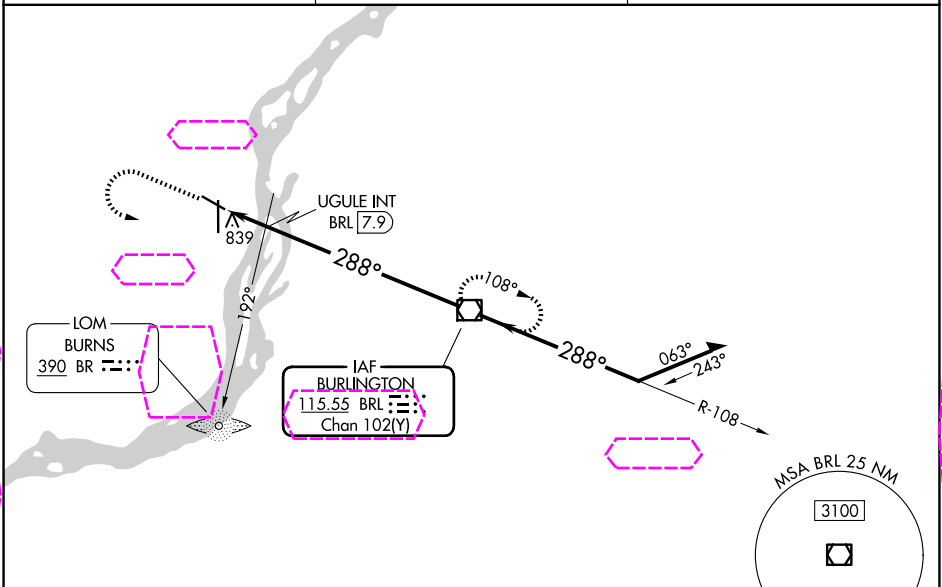
VOR RWY 30  
SOUTHEAST IOWA RGNL (BRL)

**⚠**

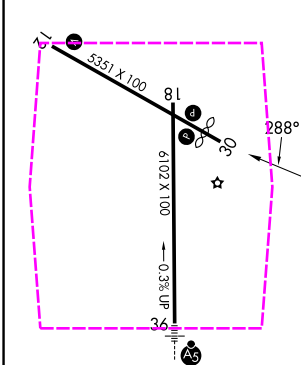
Rwy 30 helicopter visibility reduction below  $\frac{3}{4}$  SM NA.

MISSED APPROACH: Climb to 2000 then climbing left turn to 3000 direct BRL VOR/DME and hold.

ASOS 118.025	CHICAGO CENTER 135.6 370.95	UNICOM 123.0 (CTAF) <b>0</b>
-----------------	--------------------------------	---------------------------------



ELEV 698	<b>D</b>	TDZE 697
----------	----------	----------






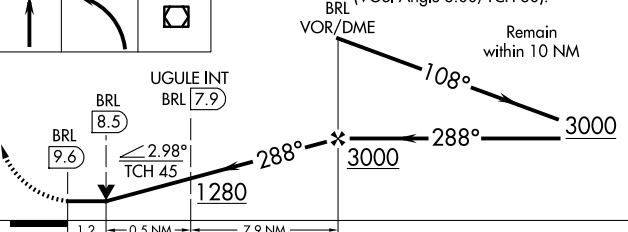
MIRL Rwy 12-30 0

HIRL Rwy 18-36 0

REIL Rwys 12, 18 and 30 0

FAF to MAP 9.6 NM

Knots	60	90	120	150	180
Min:Sec	9:36	6:24	4:48	3:50	3:12

2000	3000	BRL	VGSI and descent angles not coincident (VGSI Angle 3.00/TCH 30).			
						
CATEGORY	A	B	C	D		
S-30	1280-1	583 (600-1)	1280-1 $\frac{3}{4}$ 583 (600-1 $\frac{3}{4}$ )	NA		
CIRCLING	1280-1	582 (600-1)	1380-2 682 (700-2)	NA		
UGULE FIX MINIMUMS						
S-30	1100-1	403 (500-1)	1100-1 $\frac{1}{8}$ 403 (500-1 $\frac{1}{8}$ )	NA		
CIRCLING	1180-1	482 (500-1)	1380-2 682 (700-2)	NA		

BURLINGTON, IOWA  
Amdt 13D 20JUN19

40°47'N-91°08'W

SOUTHEAST IOWA RGNL (BRL)  
VOR RWY 30