

BURLINGTON, IOWA

AL-69 (FAA)

23222

VOR/DME BRL 111.4 Chan 51	APP CRS 108°	Rwy Idg TDZE 693 Apt Elev 698	5350
---	------------------------	---	-------------

VOR RWY 12

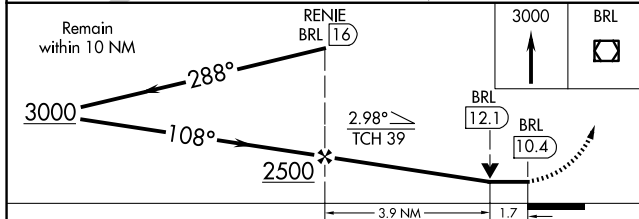
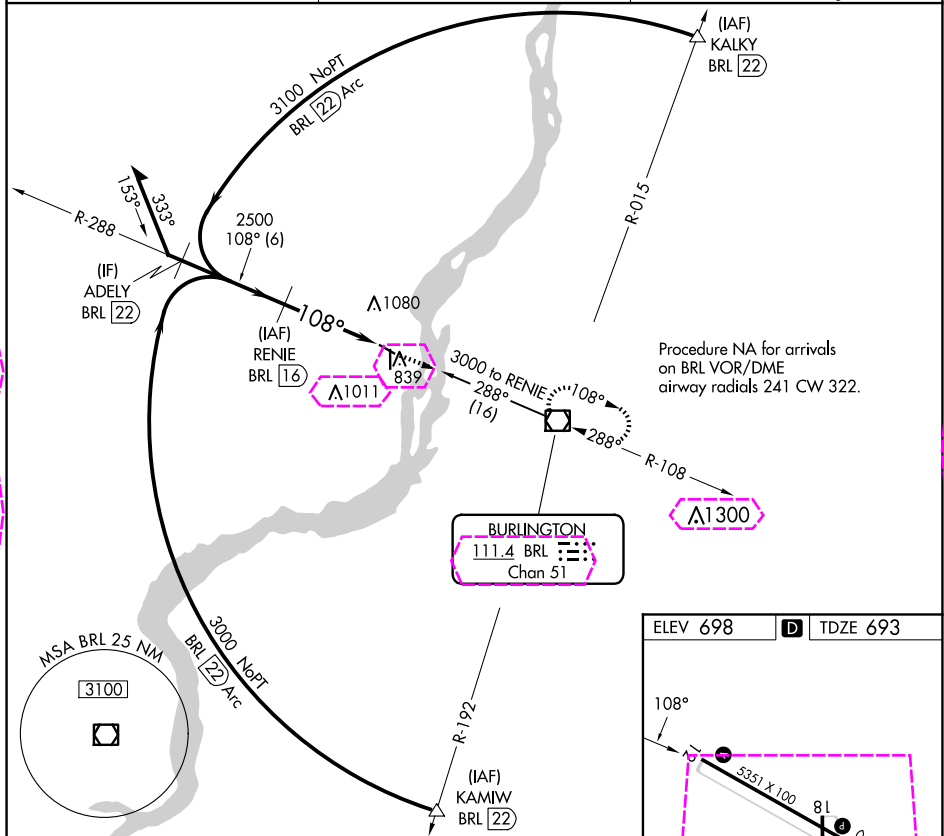
SOUTHEAST IOWA RGNL(BRL)

DME required.

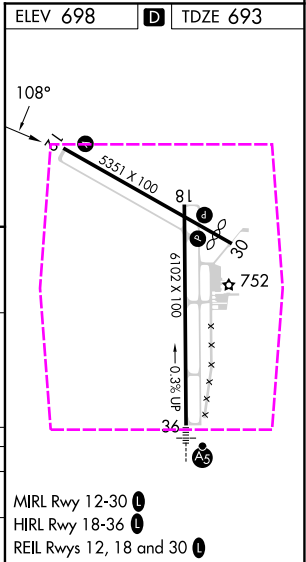


MISSED APPROACH: Climb to 3000
direct BRL VOR/DME and hold.

ASOS 118.025	CHICAGO CENTER 135.6 370.95	UNICOM 123.0 (CTAF) 0
------------------------	---------------------------------------	---------------------------------



CATEGORY	A	B	C	D
S-12	1280-1	587 (600-1)	1280-1¾ 587 (600-1¾)	NA
CIRCLING	1280-1	582 (600-1)	1380-2 682 (700-2)	NA



BURLINGTON, IOWA
Amdt 6D 20JUN19

40°47'N-91°08'W

SOUTHEAST IOWA RGNL(BRL)
VOR RWY 12

MIRL Rwy 12-30
HIRL Rwy 18-36
REIL Rws 12, 18 and 30

SOUTHEAST IOWA RGNL(BRL)
VOR RWY 12

NC-3, 07 AUG 2025 to 04 SEP 2025