

BURLINGTON, IOWA

AL-69 (FAA)

23222

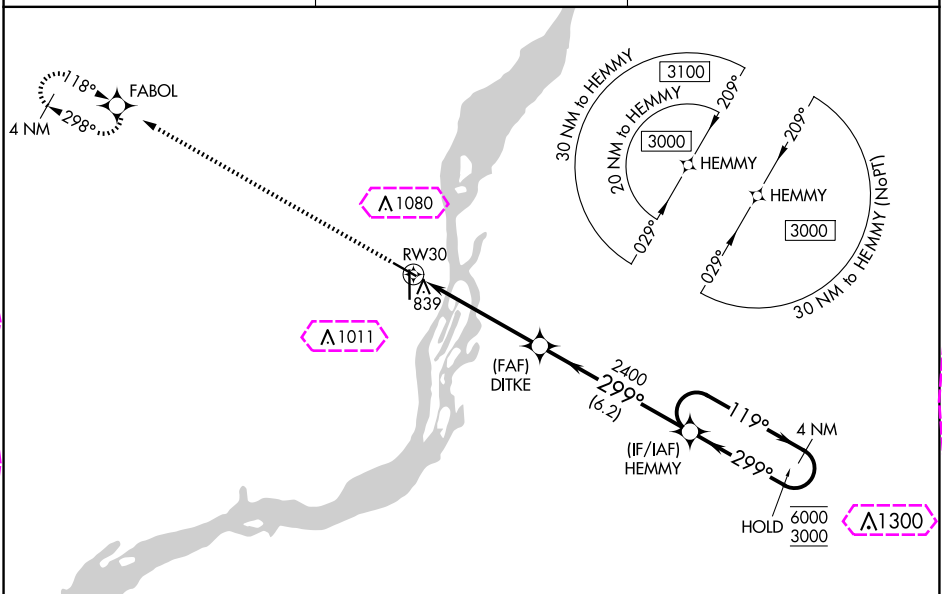
WAAS CH 45535 W30A	APP CRS 299°	Rwy Idg 4850 TDZE 697 Apt Elev 698
--	------------------------	---

RNAV (GPS) RWY 30

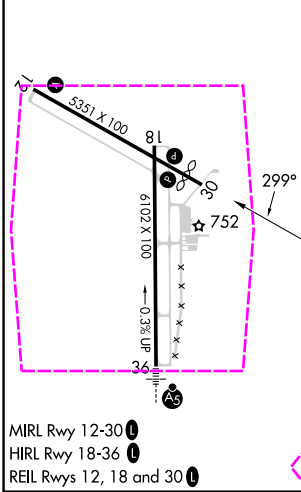
SOUTHEAST IOWA RGNL (BRL)

RNP APCH.	MISSED APPROACH: Climb to 3000 direct FABOL and hold.
Rwy 30 helicopter visibility reduction below $\frac{3}{4}$ SM NA. For uncompensated Baro-VNAV systems, procedure NA below -21°C or above 54°C.	

ASOS 118.025	CHICAGO CENTER 135.6 370.95	UNICOM 123.0 (CTAF)
------------------------	---------------------------------------	-------------------------------



ELEV 698	D	TDZE 697
----------	----------	----------



3000	FABOL	VGSIs and descent angles not coincident (VGSi Angle 3.00/TCH 30).		HEMMY	4 NM Holding Pattern
*LNAV only		DITKE		119° → 6000 ← 299° 3000	
*1.2 NM to RW30		2400		GP 3.00° TCH 40	
RW30		2400			
1.2		4 NM		6.2 NM	
CATEGORY	A	B	C	D	
LPV DA	995-1 298 (300-1)			NA	
LNAV/VNAV DA	989-1 292 (300-1)			NA	
LNAV MDA	1100-1 403 (500-1)		1100-1 403 (500-1 1/8)		NA
CIRCLING	1180-1 482 (500-1)		1380-2 682 (800-2)		NA

BURLINGTON, IOWA
Amdt 1B 20JUN19

40°47'N-91°08'W

SOUTHEAST IOWA RGNL (BRL)
RNAV (GPS) RWY 30

NC-3, 10 JUL 2025 to 07 AUG 2025

NC-3, 10 JUL 2025 to 07 AUG 2025

BURLINGTON, IOWA

AL-69 (FAA)

25219

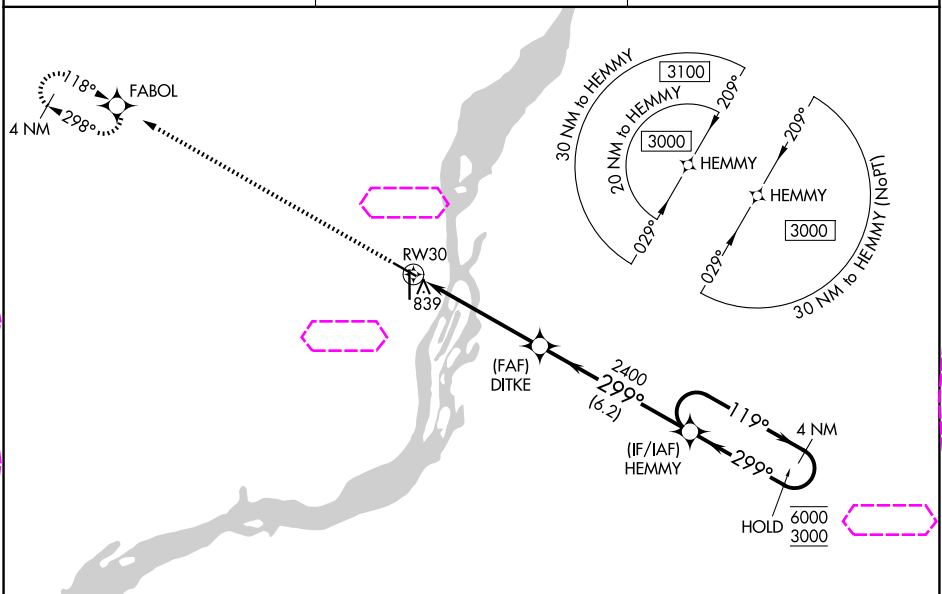
WAAS CH 45535 W30A	APP CRS 299°	Rwy Ldg 4850 TDZE 697 Apt Elev 698
--	------------------------	---

RNAV (GPS) RWY 30

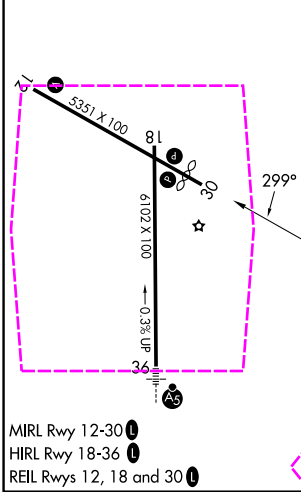
SOUTHEAST IOWA RGNL (BRL)

RNP APCH.	MISSED APPROACH: Climb to 3000 direct FABOL and hold.
-----------	--

ASOS 118.025	CHICAGO CENTER 135.6 370.95	UNICOM 123.0 (CTAF)
------------------------	---------------------------------------	-------------------------------



ELEV 698	D	TDZE 697
-----------------	----------	-----------------



3000	FABOL	VGSIs and descent angles not coincident (VGSi Angle 3.00/TCH 30).			
*LNAV only		*1.2 NM to RW30		HEMMY 4 NM Holding Pattern	
RW30		DITKE 2400	299°	119°	6000 3000
1.2		4 NM	6.2 NM	GP 3.00° TCH 40	
CATEGORY	A	B	C	D	
LPV DA	995-1 298 (300-1)			NA	
LNAV/VNAV DA	989-1 292 (300-1)			NA	
LNAV MDA	1100-1 403 (500-1)		1100-1 1/8 403 (500-1 1/8)		NA
CIRCLING	1180-1 482 (500-1)		1380-2 682 (800-2)		NA

BURLINGTON, IOWA
Amdt 1B 20JUN19

40°47'N-91°08'W

RNAV (GPS) RWY 30

NC-3, 07 AUG 2025 to 04 SEP 2025

NC-3, 07 AUG 2025 to 04 SEP 2025