

BURLINGTON, IOWA


AL-69 (FAA)

23222

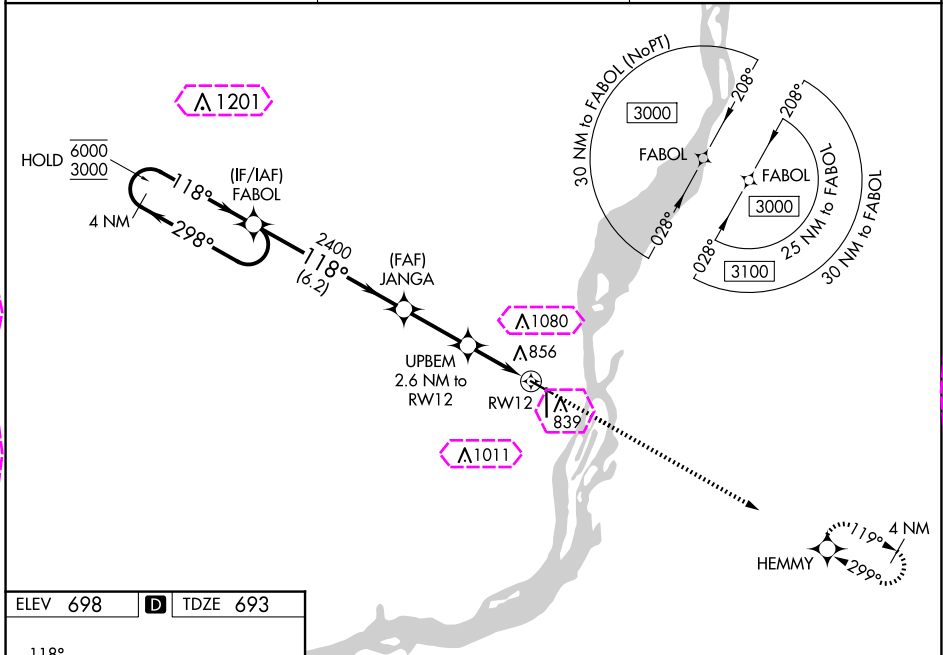
WAAS CH 48834 W12A	APP CRS 118°	Rwy Idg 5350 TDZE 693 Apt Elev 698
--	------------------------	---

RNAV (GPS) RWY 12

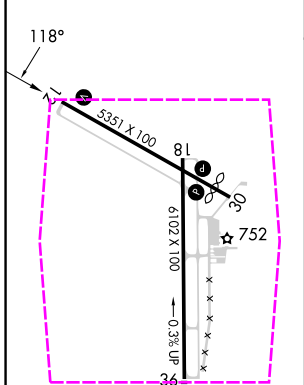
SOUTHEAST IOWA RGNL (BRL)

RNP APCH.	MISSED APPROACH: Climb to 3000 direct HEMMY and hold.
	For uncompensated Baro-VNAV systems, procedure NA below -21°C or above 54°C.

ASOS 118.025	CHICAGO CENTER 135.6 370.95	UNICOM 123.0 (CTAF) 0
------------------------	---------------------------------------	---------------------------------



ELEV 698	D	TDZE 693
----------	----------	----------



- MIRL Rwy 12-30 0
- HIRL Rwy 18-36 0
- REIL Rws 12, 18 and 30 0

4 NM Holding Pattern		FABOL	JANGA	UPBEM	HEMMY
6000 ← 298°		2400	2400	2.6 NM to RW12	3000
3000 → 118°		118°	118°	*1.2 NM to RW12	HEMMY
GP 3.00° TCH 39		2400	*1540	RW12	
		6.2 NM	2.6 NM	1.4	1.2
CATEGORY	A	B	C	D	
LPV DA	943-1 250 (300-1)				NA
LNAV/VNAV DA	1017-1½ 324 (400-1½)				NA
LNAV MDA	1120-1	427 (500-1)	1120-1¼ 427 (500-1¼)	NA	
CIRCLING	1180-1	482 (500-1)	1380-2 682 (700-2)	NA	

BURLINGTON, IOWA
Amdt 1B 20JUN19

40°47'N-91°08'W

SOUTHEAST IOWA RGNL (BRL)

RNAV (GPS) RWY 12

NC-3, 10 JUL 2025 to 07 AUG 2025

NC-3, 10 JUL 2025 to 07 AUG 2025

BURLINGTON, IOWA


AL-69 (FAA)

25219

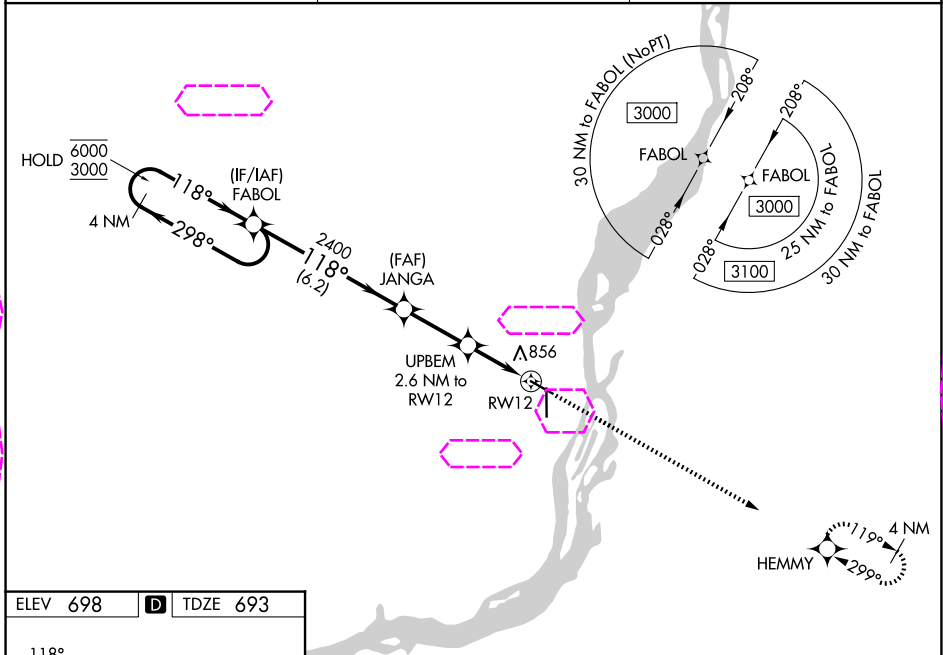
WAAS CH 48834 W12A	APP CRS 118°	Rwy Ldg 5350 TDZE 693 Apt Elev 698
--	------------------------	---

RNAV (GPS) RWY 12

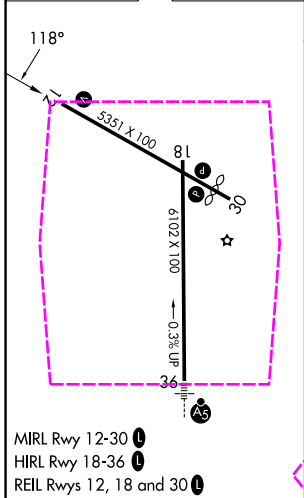
SOUTHEAST IOWA RGNL (BRL)

RNP APCH.  For uncompensated Baro-VNAV systems, procedure NA below -21°C or above 54°C.	MISSED APPROACH: Climb to 3000 direct HEMMY and hold.
--	---

ASOS 118.025	CHICAGO CENTER 135.6 370.95	UNICOM 123.0 (CTAF) 0
------------------------	---------------------------------------	---------------------------------



ELEV 698	D	TDZE 693
----------	----------	----------



4 NM Holding Pattern		FABOL	JANGA	UPBEM	HEMMY
6000 ← 298°		2400	2400	2.6 NM to RWY 12	3000
3000 → 118°		118°	2400	1.2 NM to RWY 12	HEMMY
GP 3.00° TCH 39		6.2 NM	2.6 NM	1.4 NM	1.2 NM
CATEGORY	A	B	C	D	
LPV DA	943-1 250 (300-1)				NA
LNAV/VNAV DA	1017-1½ 324 (400-1½)				NA
LNAV MDA	1120-1 427 (500-1)	1120-1¼ 427 (500-1¼)		NA	
CIRCLING	1180-1 482 (500-1)	1380-2 682 (700-2)		NA	

BURLINGTON, IOWA
Amdt 1B 20JUN19

40°47'N-91°08'W

SOUTHEAST IOWA RGNL (BRL)

RNAV (GPS) RWY 12