

BURBANK, CALIFORNIA

AL-67 (FAA)

24361

VOR/DME VNY	APP CRS	Rwy Idg	5801
113.1	089°	TDZE	727
Chan 78		Apt Elev	778

VOR RWY 8

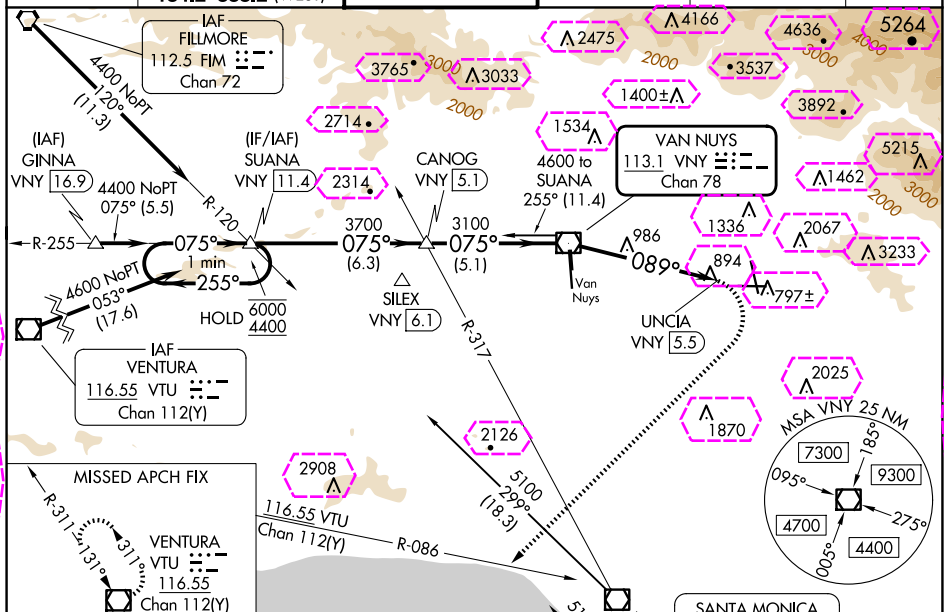
BOB HOPE (BUR)

⚠ Straight-in Rwy 8 at night, Circling to Rwy 33 at night, operational VGSI required, remain on or above VGSI glidepath until threshold. Circling Rwy 26 NA at night and Circling Rwy 33 NA at night for Cat D. Circling NA for Cats A/B/C northeast of Rwy 15 and 26. Circling NA for Cat D east of Rwy 15-33. Inop table does not apply. Rwy 8 helicopter visibility reduction below RVR 5000 NA.

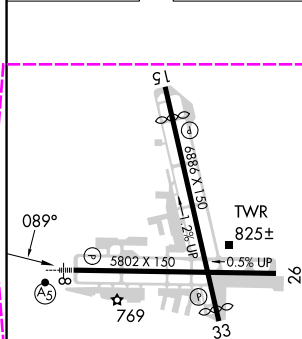
MALSR

MISSED APPROACH: Climbing right turn to 4600 on heading 210° and VTU VOR/DME R-086 to VTU VOR/DME and hold.

D-ATIS	SOCAL APP CON	BURBANK TOWER	GND CON	CLNC DEL	CPDLC
134.5	120.4 360.6 (NORTH) 134.2 338.2 (WEST)	118.7 254.3	123.9 348.6	118.0 348.6	



ELEV 778	D	TDZE 727
----------	---	----------



MIRL Rwy 15-33	
HIRL Rwy 8-26	
REIL Rws 15, 26 and 33	
FAF to MAP 5.5 NM	
Knots	60 90 120 150 180
Min:Sec	5:30 3:40 2:45 2:12 1:50

SILEX
VNY **[6.1]**

SUANA INT
VNY **[11.4]**

CANOG INT
VNY **[5.1]**

UNCIA
VNY **[5.5]**

LOS ANGELES
113.6 LAX
Chan 83

SARAJEVO
110.8 SMO
Chan 45

VGSI and descent angles not coincident
(VGSI Angle 3.00/TCH 61).

One Minute Holding Pattern

6000 ← 255°
4400 → 075°

3700 → 075°

3100 × 089°

6.3 NM 5.1 NM 5.5 NM 0.8 NM

CATEGORY	A	B	C	D
S-8	1600/55 873 (900-1)	1600-1¼ 873 (900-1¼)	1600-2½ 873 (900-2½)	
CIRCLING	1600-1¼ 822 (900-1¼)	1640-1¼ 862 (900-1¼)	2240-3 1462 (1500-3)	2320-3 1542 (1600-3)

BURBANK, CALIFORNIA
Amdt 12A 28FEB19

34°12'N-118°22'W

BOB HOPE (BUR) VOR RWY 8

BURBANK, CALIFORNIA

AL-67 (FAA)

25219

VOR/DME VNY	APP CRS	Rwy Ldg	5801
113.1	089°	TDZE	727
Chan 78		Apt Elev	778

VOR RWY 8

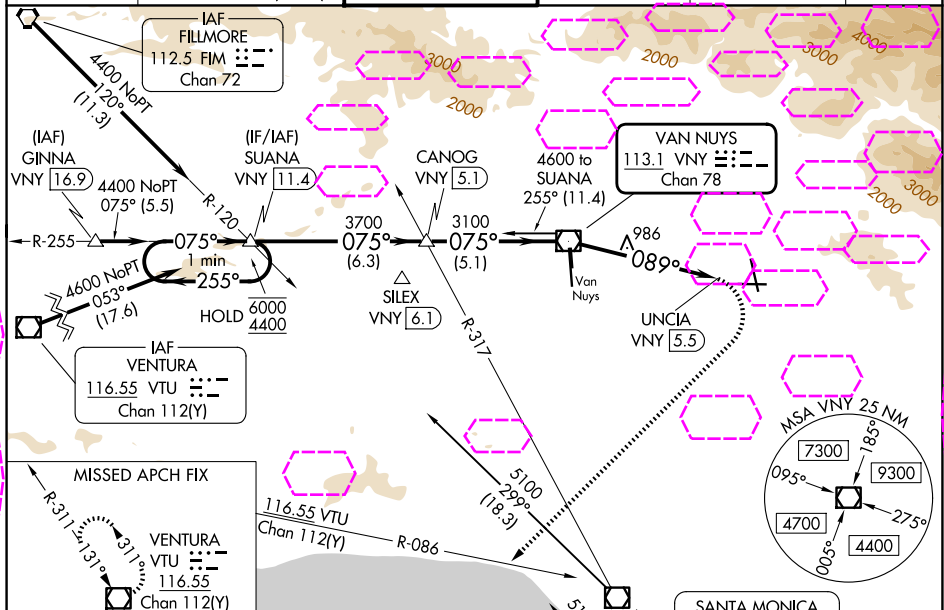
BOB HOPE (BUR)

⚠ Straight-in Rwy 8 at night, Circling to Rwy 33 at night, operational VGSI required, remain on or above VGSI glidepath until threshold. Circling Rwy 26 NA at night and Circling Rwy 33 NA at night for Cat D. Circling NA for Cats A/B/C northeast of Rwy 15 and 26. Circling NA for Cat D east of Rwy 15-33. Inop table does not apply. Rwy 8 helicopter visibility reduction below RVR 5000 NA.

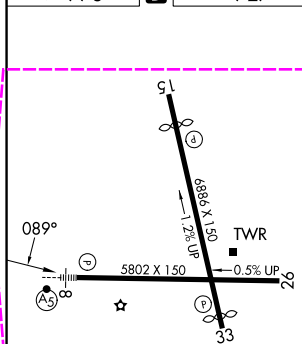


MISSED APPROACH: Climbing right turn to 4600 on heading 210° and VTU VOR/DME R-086 to VTU VOR/DME and hold.

D-ATIS	SOCAL APP CON	BURBANK TOWER	GND CON	CLNC DEL	CPDLC
134.5	120.4 360.6 (NORTH) 134.2 338.2 (WEST)	118.7 254.3	123.9 348.6	118.0 348.6	



ELEV 778	D	TDZE 727
----------	---	----------



MIRL Rwy 15-33	
HIRL Rwy 8-26	
REIL Rwys 15, 26 and 33	
FAF to MAP 5.5 NM	
Knots	60 90 120 150 180
Min:Sec	5:30 3:40 2:45 2:12 1:50

SILEX
VNY 6.1

R-311

113.1 VNY

Chan 78

R-242

062°

242°

Chan 43

ALTERNATE MISSED
APCH FIX

100 to SUANA
30.5
(22.6)

SAN JOSE
110.8 SMO
Chan 45

LOS ANGELES
113.6 LAX
Chan 83

One Minute
Holding Pattern

6000 ← 255°

4400

→ 075°

SUANA INT
VNY 11.4

CANOG INT
VNY 5.1

VNY
VOR/DME

3700

3100

4600
hdg
210°

VTU
R-086

UNCIA
VNY 5.5

3.46°
TCH 60

089°

6.3 NM

5.1 NM

5.5 NM

0.8 NM

CATEGORY	A	B	C	D
S-8	1600/55 873 (900-1)	1600-1¼ 873 (900-1¼)	1600-2½ 873 (900-2½)	
CIRCLING	1600-1¼ 822 (900-1¼)	1640-1¼ 862 (900-1¼)	2240-3 1462 (1500-3)	2320-3 1542 (1600-3)

BURBANK, CALIFORNIA
Amdt 12A 28FEB19

34°12'N-118°22'W

BOB HOPE (BUR) VOR RWY 8

SW-3, 07 AUG 2025 to 04 SEP 2025

SW-3, 07 AUG 2025 to 04 SEP 2025