

BURBANK, CALIFORNIA

AL-67 (FAA)

24361

WAAS CH 53638 W08A	APP CRS 079°	Rwy Idg TDZE 727 Apt Elev 778
--	------------------------	---

RNAV (GPS) Z RWY 8

BOB HOPE (BUR)

RNP APCH.

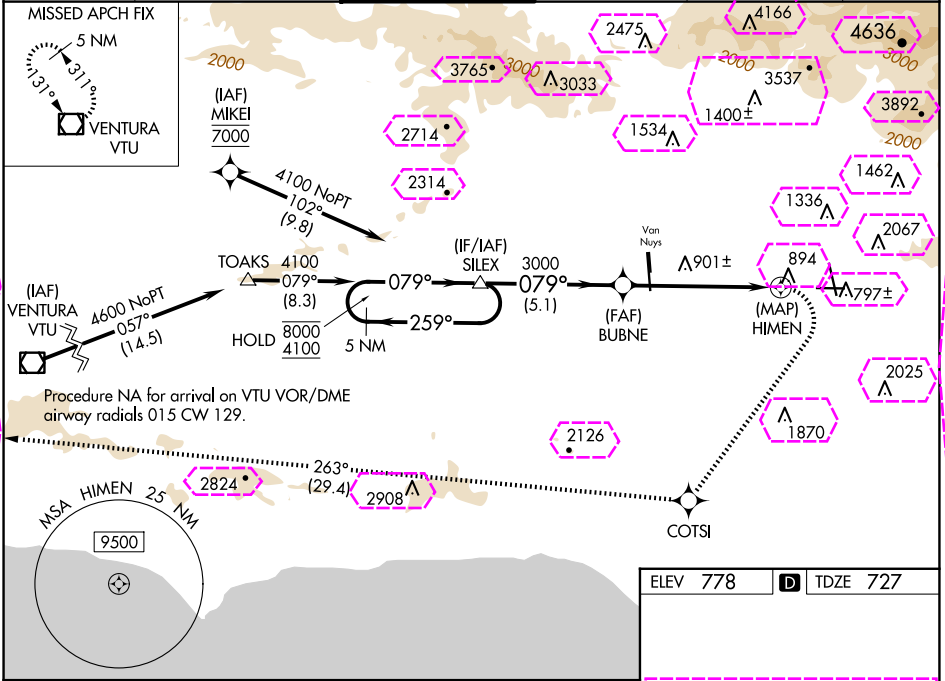
▼ Straight-in Rwy 8 at night, Circling to Rwy 33 at night, operational VGSI required, remain on or above VGSI glidepath until threshold. Circling Rwy 26 NA at night and Circling Rwy 33 NA at night for Cat D. Circling NA for Cats A/B/C northeast of Rwy 15 and 26. Circling NA for Cat D east of Rwy 15-33. For inop ALS, increase LP Cat A/B visibility to 1½ SM and LP Cat C/D visibility to 2½ SM. For inop ALS, increase LNAV Cat A/B visibility to 1½ SM. Rwy 8 helicopter visibility reduction below RVR 5000 NA.

MALSR

AS

MISSED APPROACH:
Climbing right turn to 4600 direct COTS1 and on track 263° to VTU VOR/DME and hold.

D-ATIS 134.5	SOCAL APP CON 120.4 360.6 (NORTH) 134.2 338.2 (WEST)	BURBANK TOWER 118.7 254.3	GND CON 123.9 348.6	CLNC DEL 118.0 348.6	CPDLC
------------------------	--	-------------------------------------	-------------------------------	--------------------------------	-------



5 NM Holding Pattern

SILEX

BUBNE

HIMEN

5.1 NM

5.7 NM

1.3 NM

8000

4100

259°

079°

079°

3000

3.00° TCH 60

4600

COTS1

tr 263°

VTU

51

6880 X 150

TWR 825±

5802 X 150

769

33

26

079°

AS

CATEGORY	A	B	C	D
LP MDA	1540/60	813 (800-1¼)	1540-1⅞	813 (800-1⅞)
LNAV MDA	1660/60	933 (900-1¼)	1660-2	933 (900-2)
CIRCLING	1660-1½	882 (900-1½)	2240-3 1462 (1500-3)	2320-3 1542 (1600-3)

MIRL Rwy 15-33

HIRL Rwy 8-26

REIL Rws 15, 26, and 33

BURBANK, CALIFORNIA
Amdt 2B 11JUL24

34°12'N-118°22'W

RNAV (GPS) Z RWY 8

BOB HOPE (BUR)

SW-3, 10 JUL 2025 to 07 AUG 2025

SW-3, 10 JUL 2025 to 07 AUG 2025

