

RNAV (RNP) Y RWY 8  
BOB HOPE (BUR)

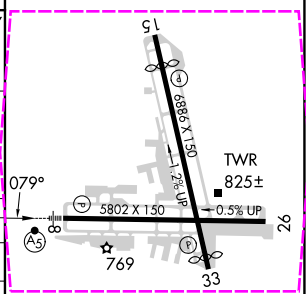
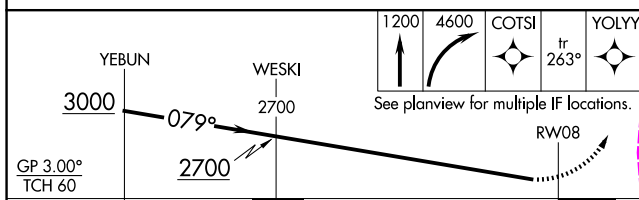
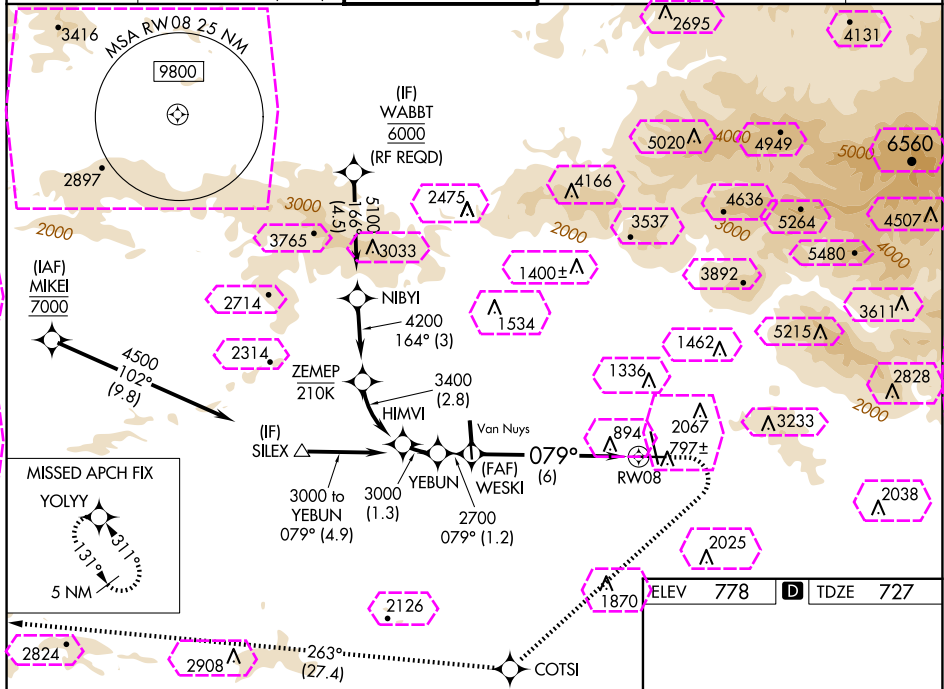


**MISSED APPROACH:** Climb to 1200 then climbing right turn to 4600 direct COTSI and on track 263° to YOLYY and hold.

\*Missed approach requires minimum climb of 340 feet per NM to 2400.

# Missed approach requires minimum climb of 317 feet per NM to 2400.

CPDLC



CATEGORY	A	B	C	D
RNP 0.20 DA*		1068/50	341 (300-1)	
RNP 0.30 DA#		1151/50	424 (400-1)	
RNP 0.30 DA		1485-2½	758 (800-2½)	

# AUTHORIZATION REQUIRED

MIRL Rwy 15-33  
HIRL Rwy 8-26  
REIL Rwy 15, 26 and 33

34°12'N-118°22'W

BOB HOPE (BUR)  
RNAV (RNP) Y RWY 8

BURBANK, CALIFORNIA

AL-67 (FAA)

25219

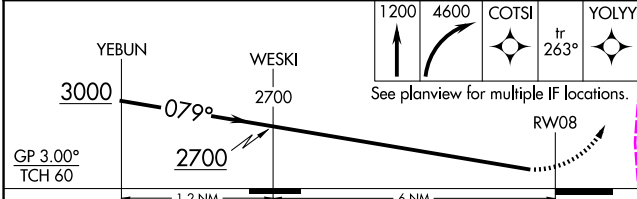
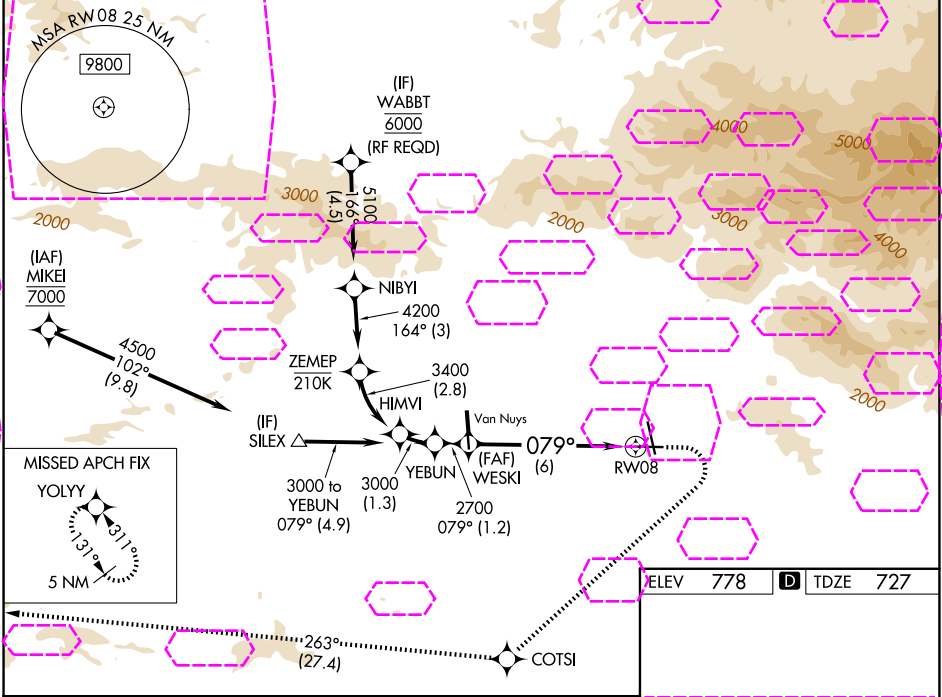
APP CRS	Rwy Ldg	5801
079°	TDZE	727
	Apt Elev	778

# RNAV (RNP) Y RWY 8

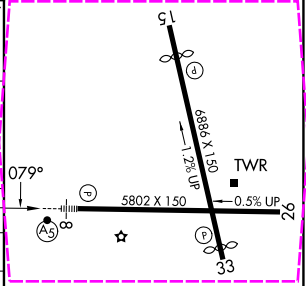
BOB HOPE (BUR)

RNP AR APCH.	MALSR	MISSED APPROACH: Climb to 1200 then climbing right turn to 4600 direct COTSI and on track 263° to YOLYY and hold. *Missed approach requires minimum climb of 340 feet per NM to 2400. # Missed approach requires minimum climb of 317 feet per NM to 2400.
For uncompensated Baro-VNAV systems, procedure NA below 1°C or above 54°C. Straight-in Rwy 8 at night, operational VGSi required, remain on or above VGSi glidepath until threshold. Inop table does not apply to RNP 0.20* and RNP 0.30. For inop ALS, increase RNP 0.30 # all Cats visibility to 1 1/4 SM.		

D-ATIS	SOCAL APP CON	BURBANK TOWER	GND CON	CLNC DEL	CPDLC
134.5	120.4 360.6 (NORTH) 134.2 338.2 (WEST)	118.7 254.3	123.9 348.6	118.0 348.6	



CATEGORY	A	B	C	D
RNP 0.20 DA*		1068/50	341 (300-1)	
RNP 0.30 DA#		1151/50	424 (400-1)	
RNP 0.30 DA		1485-2 1/2	758 (800-2 1/2)	



**AUTHORIZATION REQUIRED**

MIRL Rwy 15-33  
HIRL Rwy 8-26  
REIL Rwy 15, 26 and 33

BURBANK, CALIFORNIA

Amdt 2B 11JUL24

34°12'N-118°22'W

BOB HOPE (BUR)

# RNAV (RNP) Y RWY 8

SW-3, 07 AUG 2025 to 04 SEP 2025

SW-3, 07 AUG 2025 to 04 SEP 2025