

BURBANK, CALIFORNIA

AL-67 (FAA)

24361

LOC I-BUR 109.5	APP CRS 079°	Rwy Idg TDZE Apt Elev 5801 727 778
---------------------------	------------------------	--

ILS Z or LOC Z RWY 8

BOB HOPE (BUR)

From MIKE: RNAV 1-GPS required.

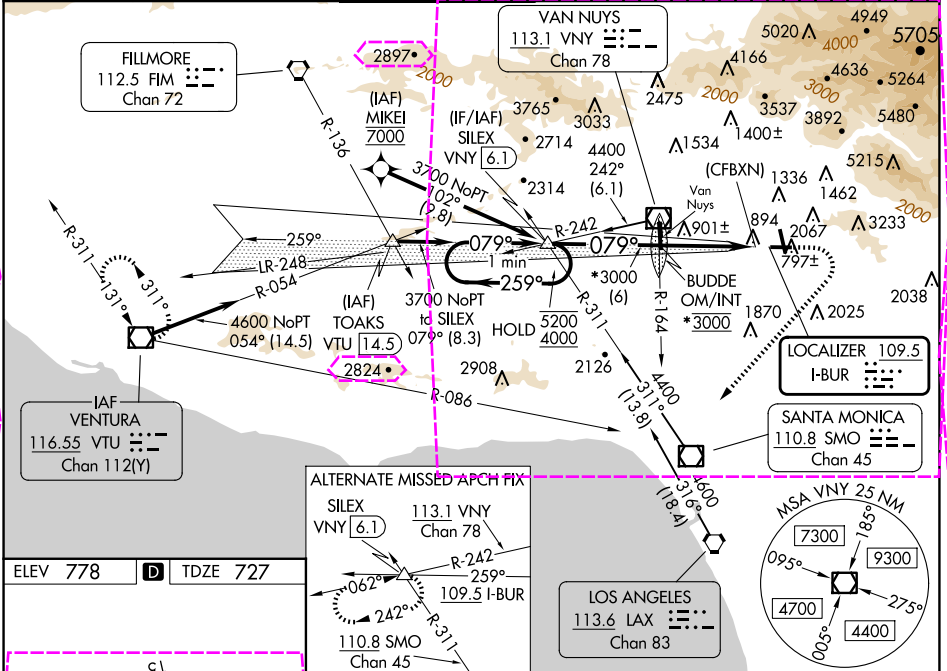
⚠ Localizer unusable within 0.9 NM to thld. Straight-in Rwy 8 at night, Circling to Rwy 33 at night, operational VGSI required, remain on or above VGSI glidepath until threshold. Circling Rwy 26 NA at night and Circling Rwy 33 NA at night for Cat D. Circling NA for Cats A/B/C northeast of Rwy 15 and 26. Circling NA for Cat D east of Rwy 15-33. Inop table does not apply to S-ILS 8. For inop ALS, increase S-LOC 8 Cats A/B visibility to RVR 6000 and S-LOC 8 Cats C/D visibility to 1¼ SM. Rwy 8 helicopter visibility reduction below RVR 5000 NA.

MALSR



MISSED APPROACH: Climb to 1300 then climbing right turn to 4600 on heading 210° and VTU VOR/DME R-086 to VTU VOR/DME and hold. # Missed approach requires a minimum climb of 340 feet per NM to 2520 (if unable to meet climb gradient, see ILS Y or LOC Y RWY 8).

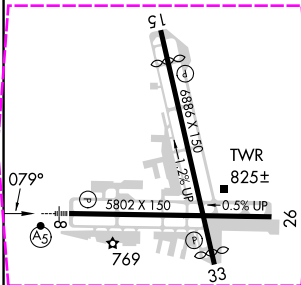
D-ATIS 134.5	SOCAL APP CON 120.4 360.6 (NORTH) 134.2 338.2 (WEST)	BURBANK TOWER 118.7 254.3	GND CON 123.9 348.6	CLNC DEL 118.0 348.6	CPDLC
------------------------	--	-------------------------------------	-------------------------------	--------------------------------	-------



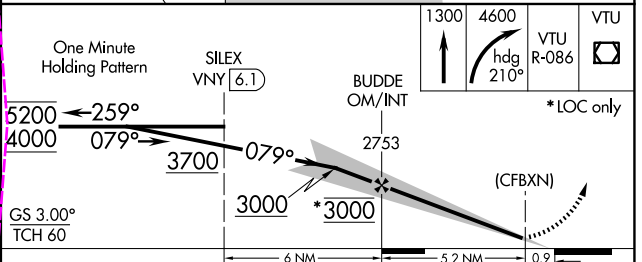
SW-3, 10 JUL 2025 to 07 AUG 2025

SW-3, 10 JUL 2025 to 07 AUG 2025

ELEV 778	D	TDZE 727
----------	----------	----------



MIRL Rwy 15-33	
HIRL Rwy 8-26	
REIL Rws 15, 26 and 33	
FAF to MAP 5.2 NM	
Knots	60 90 120 150 180
Min:Sec	5:12 3:28 2:36 2:05 1:44



CATEGORY	A	B	C	D
S-ILS 8 #		1075/50	348 (300-1)	
S-LOC 8 #		1160/50	433 (400-1)	
CIRCLING	1280-1½ 502 (600-1½)	1640-1¼ 862 (900-1¼)	2240-3 1462 (1500-3)	2320-3 1542 (1600-3)

BURBANK, CALIFORNIA
Amdt 39B 11JUL24

34°12'N-118°22'W

BOB HOPE (BUR)
ILS Z or LOC Z RWY 8

BURBANK, CALIFORNIA

AL-67 (FAA)

25219

LOC I-BUR 109.5	APP CRS 079°	Rwy Ldg TDZE Apt Elev 5801 727 778
---------------------------	------------------------	--

ILS Z or LOC Z RWY 8

BOB HOPE (BUR)

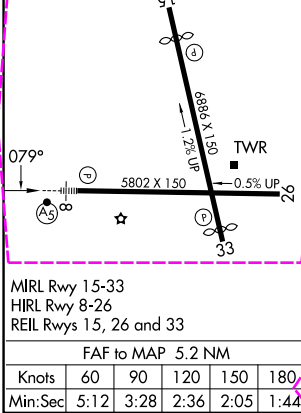
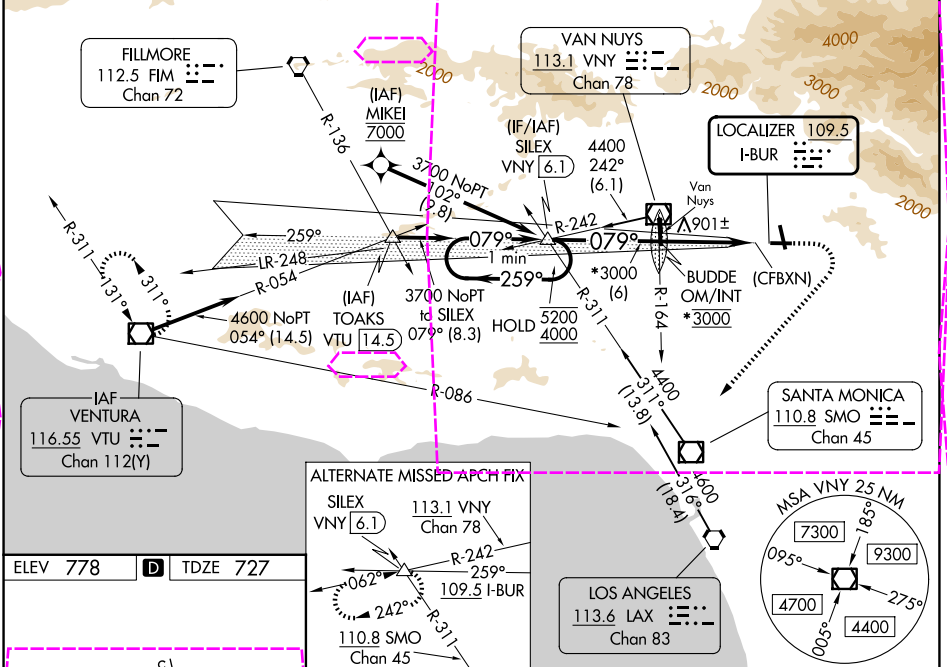
From MIKEI: RNAV 1-GPS required.

Localizer unusable within 0.9 NM to thld. Straight-in Rwy 8 at night, Circling to Rwy 33 at night, operational VGSi required, remain on or above VGSi glidepath until threshold. Circling Rwy 26 NA at night and Circling Rwy 33 NA at night for Cat D. Circling NA for Cats A/B/C northeast of Rwy 15 and 26. Circling NA for Cat D east of Rwy 15-33. Inop table does not apply to S-ILS 8. For inop ALS, increase S-LOC 8 Cats A/B visibility to RVR 6000 and S-LOC 8 Cats C/D visibility to 1 1/4 SM. Rwy 8 helicopter visibility reduction below RVR 5000 NA.

MALSR

MISSED APPROACH: Climb to 1300 then climbing right turn to 4600 on heading 210° and VTU VOR/DME R-086 to VTU VOR/DME and hold. # Missed approach requires a minimum climb of 340 feet per NM to 2520 (if unable to meet climb gradient, see ILS Y or LOC Y RWY 8).

D-ATIS 134.5	SOCAL APP CON 120.4 360.6 (NORTH) 134.2 338.2 (WEST)	BURBANK TOWER 118.7 254.3	GND CON 123.9 348.6	CLNC DEL 118.0 348.6	CPDLC
------------------------	--	-------------------------------------	-------------------------------	--------------------------------	-------



One Minute Holding Pattern		SILEX VNY (6.1)		1300 ↑		4600 hdg 210°		VTU R-086		VTU ☐	
5200 ← 259°		4000 ← 079°		3700 ← 079°		2753		*LOC only			
GS 3.00° TCH 60		3000		*3000		(CFBXN)					
		6 NM		5.2 NM		0.9					
CATEGORY	A	B	C	D							
S-ILS 8 #	1075/50 348 (300-1)										
S-LOC 8 #	1160/50 433 (400-1)										
CIRCLING	1280-1½ 502 (600-1½)	1640-1¼ 862 (900-1¼)	2240-3 1462 (1500-3)	2320-3 1542 (1600-3)							