

BLACKSTONE, VIRGINIA

AL-52 (FAA)

25219

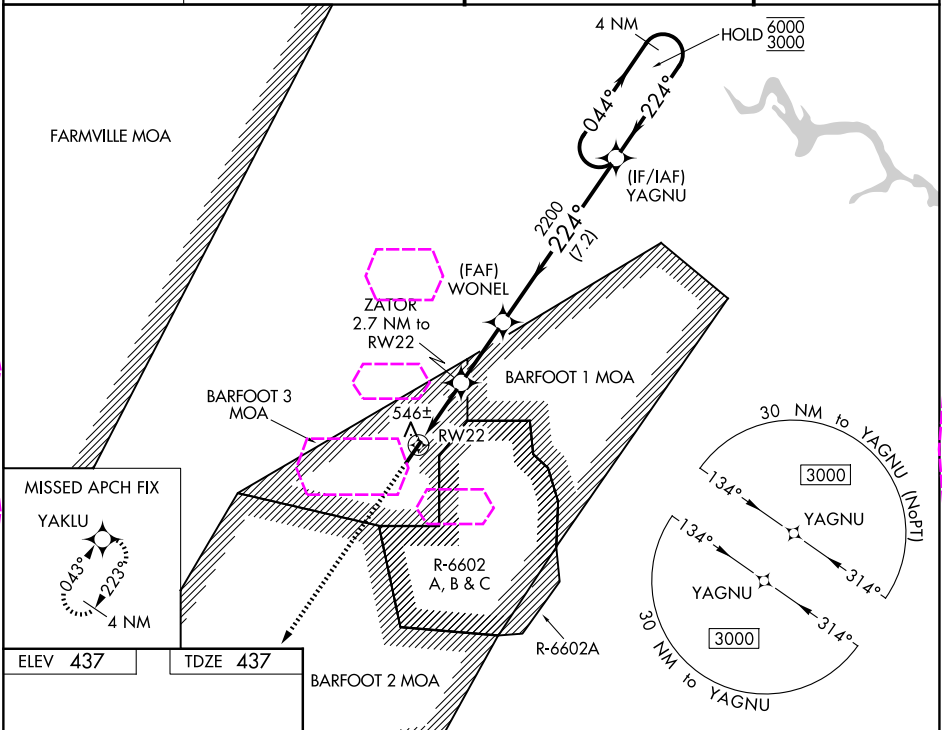
WAAS CH 53734 W22A	APP CRS 224°	Rwy Ldg 5333 TDZE 437 Apt Elev 437
--	------------------------	---

RNAV (GPS) RWY 22

ALLAN C PERKINSON/BLACKSTONE AAF (BKT)

RNP APCH - GPS. ⚠ For uncompensated Baro-VNAV systems, LNAV/VNAV NA below -15°C or above 54°C. Circling NA southeast of Rwy 4-22. Rwy 22 helicopter visibility reduction below ¾ SM NA.	MISSED APPROACH: Climb to 3000 direct YAKLU and hold.
---	--

ATIS 119.225	WASHINGTON CENTER 118.75 377.1	BLACKSTONE TOWER ★ 134.7 (CTAF) 0 292.7	GND CON 127.625
------------------------	--	---	---------------------------



ELEV 437	TDZE 437	3000 YAKLU				YAGNU 4 NM Holding Pattern			
MIRL Rwy 4-22 0		CIRCLING		ZATOR 2.7 NM to RW22		WONEL 2200		YAGNU 2200	
0.7% UP 5333 X 150		1.4 NM to RW22		1.3		2.7 NM		7.2 NM	
CATEGORY		A		B		C		D	
LPV DA		698-1		261 (300-1)				NA	
LNAV/VNAV DA		698-1		261 (300-1)				NA	
LNAV MDA		940-1 503 (600-1)		940-1 503 (600-1 1/8)		940-1 503 (600-1 1/8)		NA	
MIRL Rwy 4-22 0		CIRCLING		940-1 503 (600-1)		1000-1 1/2 563 (600-1 1/2)		NA	

BLACKSTONE, VIRGINIA

Amdt 1C 31OCT24

ALLAN C PERKINSON/BLACKSTONE AAF (BKT)

37°04'N-77°57'W

RNAV (GPS) RWY 22

NE-3, 07 AUG 2025 to 04 SEP 2025

NE-3, 07 AUG 2025 to 04 SEP 2025