

BLACKSTONE, VIRGINIA


AL-52 (FAA)

25163

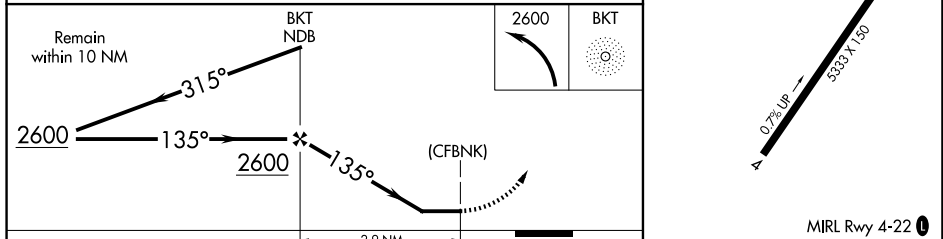
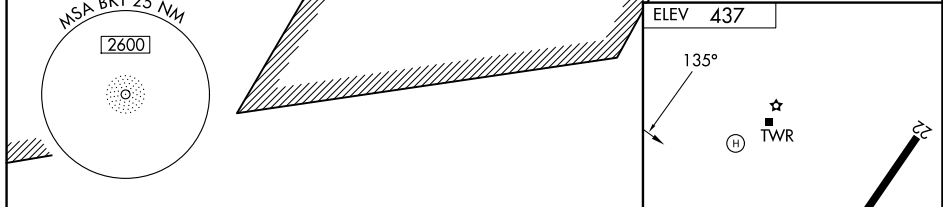
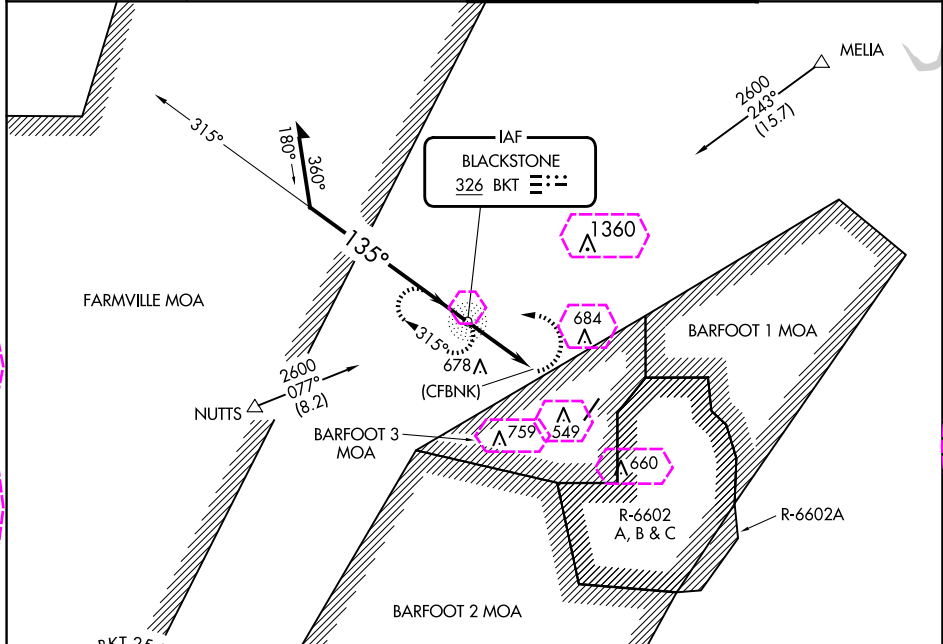
NDB BKT 326	APP CRS 135°	Rwy Ldg TDZE Apt Elev N/A N/A 437
-----------------------	------------------------	---


NDB-A

ALLAN C PERKINSON/BLACKSTONE AAF (BKT)

	Circling NA east of Rwy 4-22.	MISSED APPROACH: Climbing left turn to 2600 direct BKT NDB and hold, continue climb-in-hold to 2600.
---	-------------------------------	--

ATIS 119.225	WASHINGTON CENTER 118.75 377.1	BLACKSTONE TOWER ★ 134.7 (CTAF) 292.7	GND CON 127.625
------------------------	--	---	---------------------------



CATEGORY	A	B	C	D	FAF to MAP 2.9 NM					
 CIRCLING	980-3	543 (600-3)	1000-3 563 (600-3)	NA	Knots	60	90	120	150	180
					Min:Sec	2:54	1:56	1:27	1:10	0:58

BLACKSTONE, VIRGINIA
Amdt 13A 31OCT24

ALLAN C PERKINSON/BLACKSTONE AAF (BKT)

37°04'N-77°57'W

NDB-A

NDB BKT	APP CRS	Rwy Ldg	N/A
<u>326</u>	135°	TDZE	N/A
		Apt Elev	437

NDB-A

ALLAN C PERKINSON/BLACKSTONE AAF (BKT)

T
A Circling NA east of Rwy 4-22.

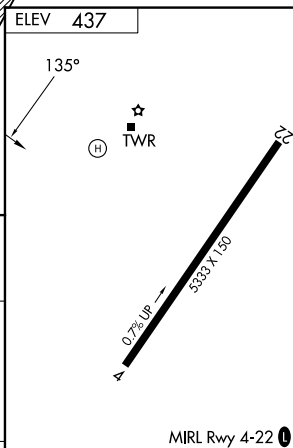
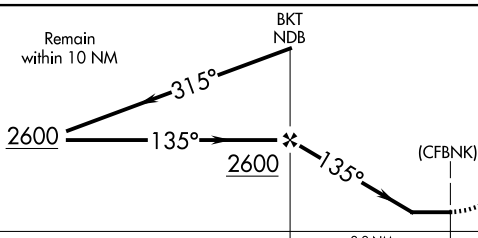
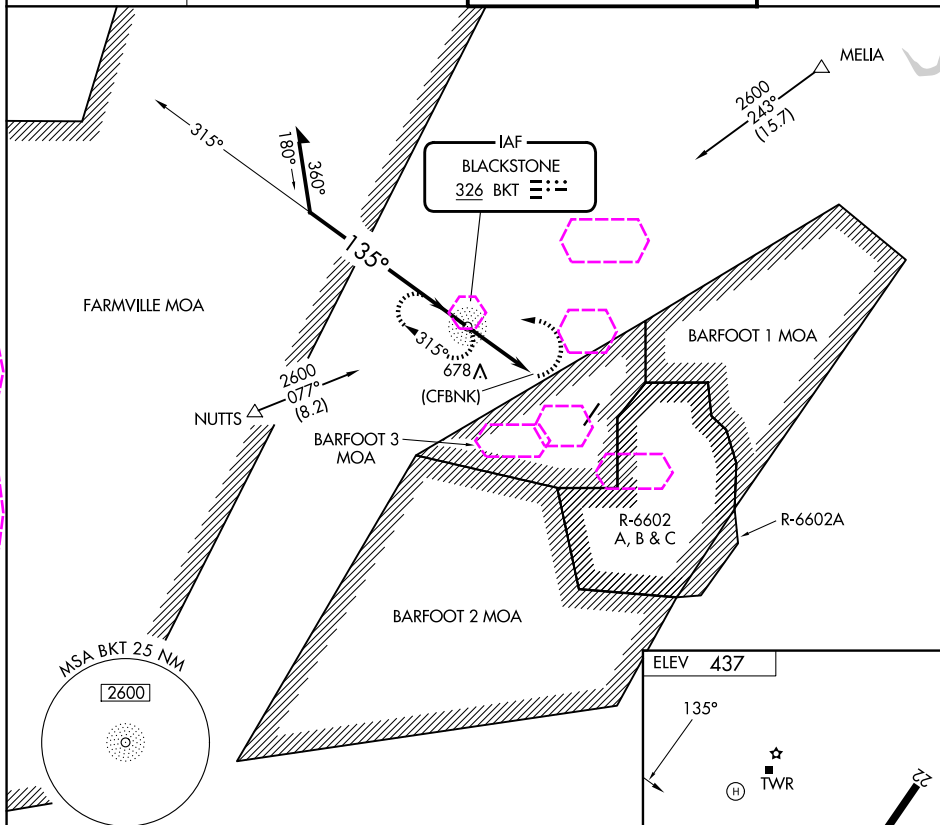
MISSED APPROACH: Climbing left turn to 2600 direct BKT NDB and hold, continue climb-in-hold to 2600.

ATIS
119.225

WASHINGTON CENTER
118.75 377.1

BLACKSTONE TOWER ★
134.7 (CTAF) **L** 292.7

GND CON
127,625



CATEGORY	A	B	C	D	FAF to MAP 2.9 NM					
CIRCLING	980-3	543 (600-3)	1000-3 563 (600-3)	NA	Knots	60	90	120	150	180
					Min:Sec	2:54	1:56	1:27	1:10	0:58

BLACKSTONE, VIRGINIA
Amdt 13A 31OCT24

ALLAN C PERKINSON/BLACKSTONE AAF (BKT)

37°04'N-77°57'W

NDB-A

NE-3, 07 AUG 2025 to 04 SEP 2025

NE-3, 07 AUG 2025 to 04 SEP 2025