

BISMARCK, NORTH DAKOTA

AL-51 (FAA)

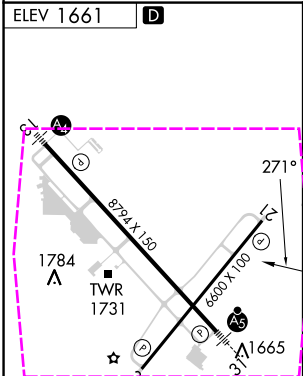
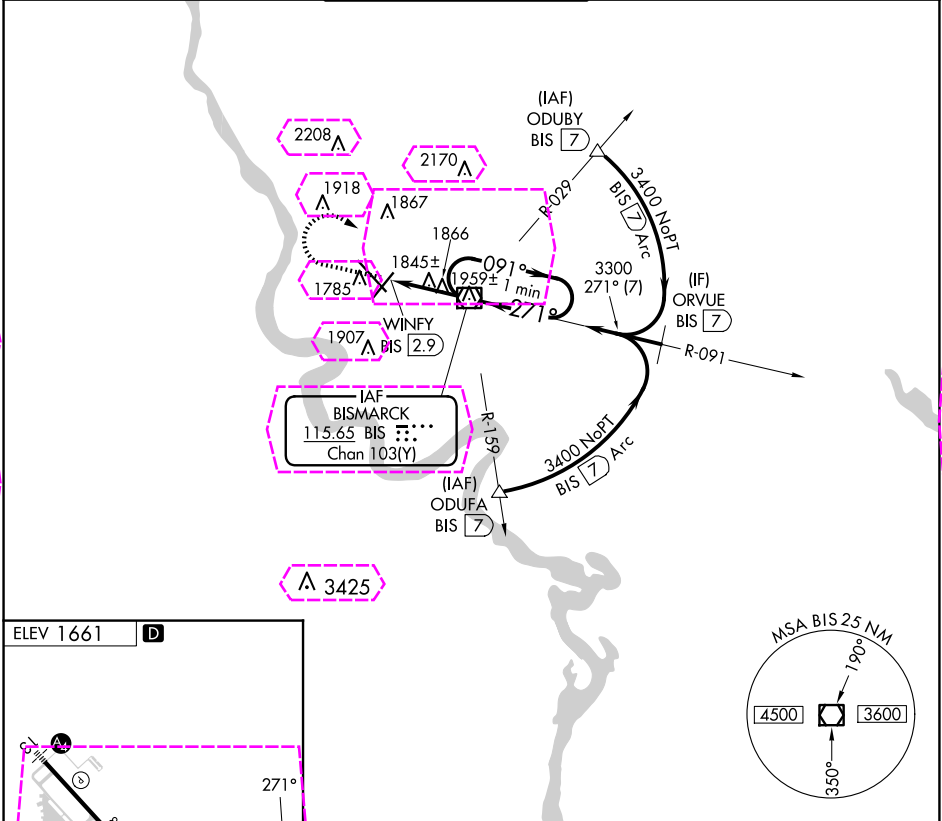
22307

VOR/DME BIS 115.65 Chan 103(Y)	APP CRS 271°	Rwy Idg TDZE Apt Elev N/A N/A 1661
--	------------------------	--

VOR-A
BISMARCK MUNI (BIS)

ASR	MISSED APPROACH: Climb to 3000 then climbing right turn to 3500 direct BIS VOR/DME and hold.
------------	--

ATIS 119.35	BISMARCK APP CON ★ 126.3 298.9	BISMARCK TOWER ★ 118.3 (CTAF) 0 257.8	GND CON 121.9	UNICOM 122.95
-----------------------	--	---	-------------------------	-------------------------



REIL Rws 3 and 21
HIRL Rws 3-21 and 13-31

FAF to MAP 2.9 NM						CATEGORY	A	B	C	D
Knots	60	90	120	150	180	CIRCLING	2200-1	539 (600-1)	2460-2¼ 799 (800-2¼)	2460-2½ 799 (800-2½)
Min:Sec	2:54	1:56	1:27	1:10	0:58					

BISMARCK, NORTH DAKOTA
Amdt 21A 23APR20

46°46'N-100°45'W

BISMARCK MUNI (BIS)
VOR-A

BISMARCK, NORTH DAKOTA

AL-51 (FAA)

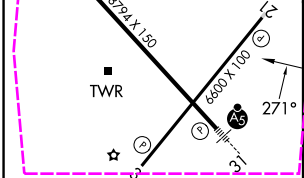
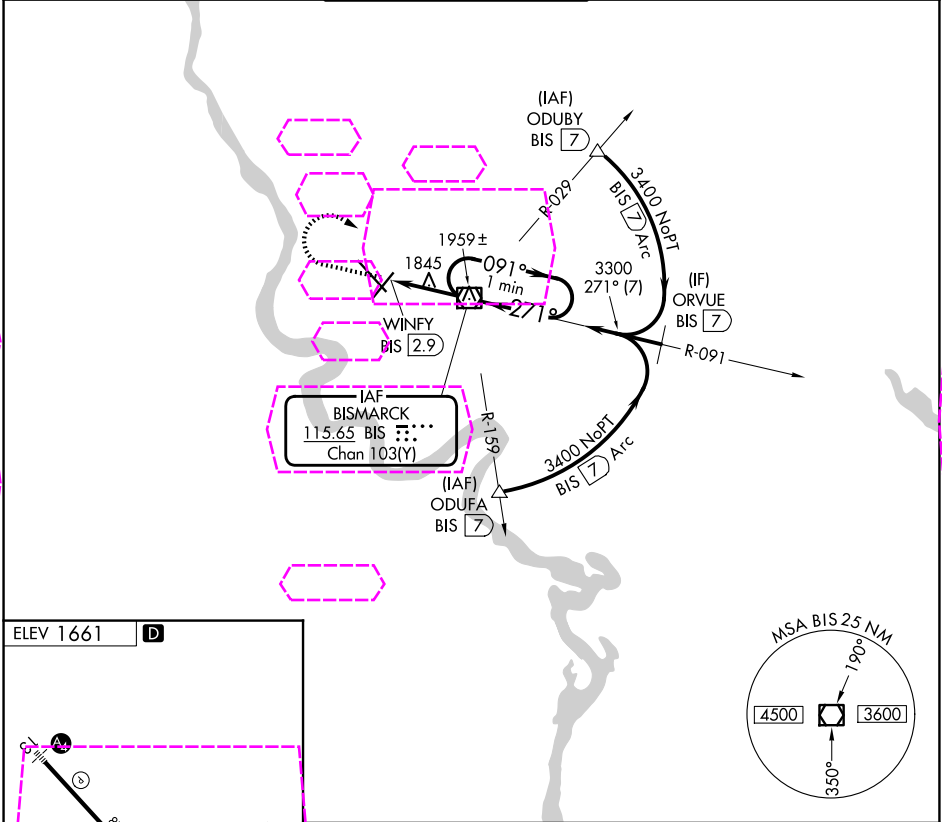
25219

VOR/DME BIS 115.65 Chan 103(Y)	APP CRS 271°	Rwy Ldg TDZE Apt Elev N/A N/A 1661
--	------------------------	--

VOR-A
BISMARCK MUNI (BIS)

 ASR	MISSED APPROACH: Climb to 3000 then climbing right turn to 3500 direct BIS VOR/DME and hold.
--	--

ATIS 119.35	BISMARCK APP CON ★ 126.3 298.9	BISMARCK TOWER ★ 118.3 (CTAF) 0 257.8	GND CON 121.9	UNICOM 122.95
-----------------------	--	---	-------------------------	-------------------------



REIL Rwy 3 and 21
HIRL Rwy 3-21 and 13-31

FAF to MAP 2.9 NM						CATEGORY	A		B		C		D	
Knots	60	90	120	150	180	CIRCLING	2200-1		539 (600-1)		2460-2¼ 799 (800-2¼)		2460-2½ 799 (800-2½)	
Min:Sec	2:54	1:56	1:27	1:10	0:58									

BISMARCK, NORTH DAKOTA
Amdt 21A 23APR20

46°46'N-100°45'W

BISMARCK MUNI (BIS)
VOR-A

NC-1, 07 AUG 2025 to 04 SEP 2025

NC-1, 07 AUG 2025 to 04 SEP 2025