

BISMARCK, NORTH DAKOTA


AL-51 (FAA)

22307

WAAS CH 63099 W03A	APP CRS 032°	Rwy Idg TDZE 1661 Apt Elev 1661
--	------------------------	---

RNAV (GPS) RWY 3

BISMARCK MUNI (BIS)

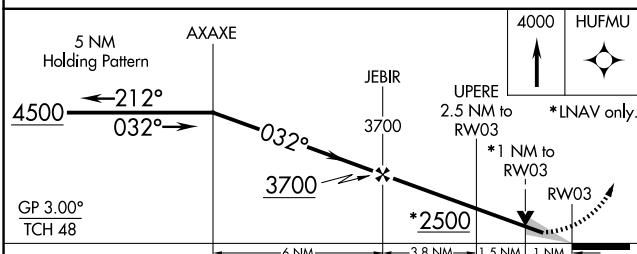
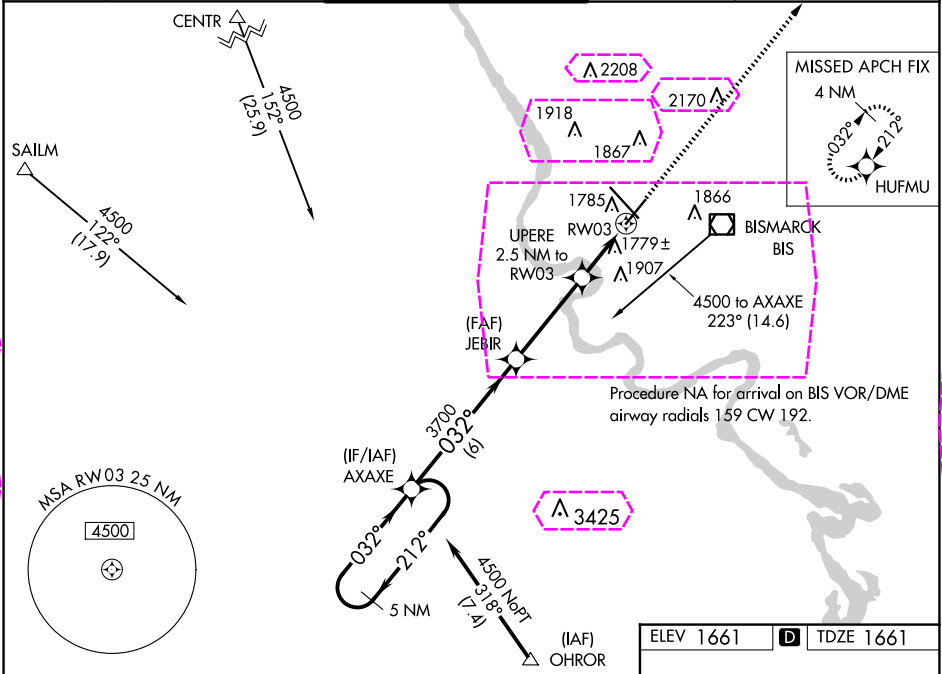


ASR

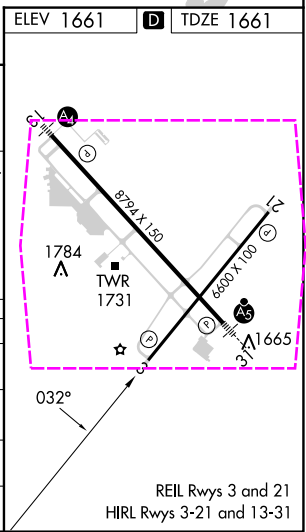
For uncompensated Baro-VNAV systems,
LNAV/VNAV NA below -18°C (0°F) or
above 33°C (91°F). DME/DME RNP-0.3 NA.

MISSED APPROACH: Climb to
4000 direct HUFMU and hold.

ATIS 119.35	BISMARCK APP CON ★ 126.3 298.9	BISMARCK TOWER ★ 118.3 (CTAF) 0 257.8	GND CON 121.9	UNICOM 122.95
-----------------------	--	---	-------------------------	-------------------------



CATEGORY	A	B	C	D
LPV DA	1861-3/4 200 (200-3/4)			
LNAV/VNAV DA	2081-13/8 420 (500-13/8)			
LNAV MDA	2040-1 379 (400-1)			
CIRCLING	2200-1 539 (600-1)	2460-2 1/4 799 (800-2 1/4)	2460-2 1/2 799 (800-2 1/2)	



BISMARCK, NORTH DAKOTA
Amdt 2B 23APR20

46°46'N-100°45'W

BISMARCK MUNI (BIS) RNAV (GPS) RWY 3

BISMARCK, NORTH DAKOTA


AL-51 (FAA)

25219

WAAS CH 63099 W03A	APP CRS 032°	Rwy Ldg TDZE Apt Elev 1661 1661
--	------------------------	---

RNAV (GPS) RWY 3

BISMARCK MUNI (BIS)

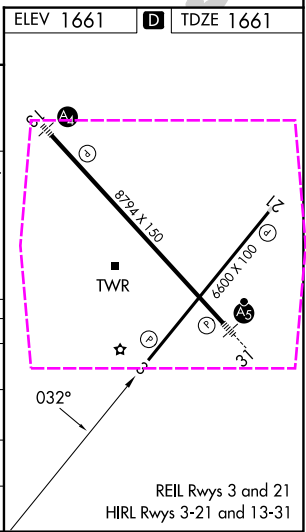
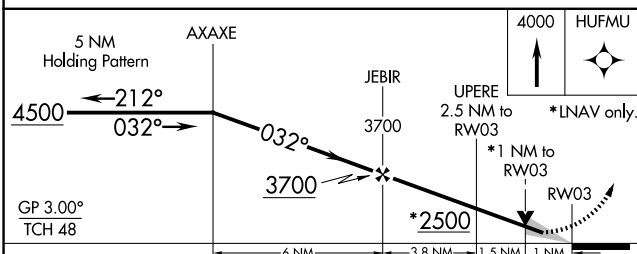
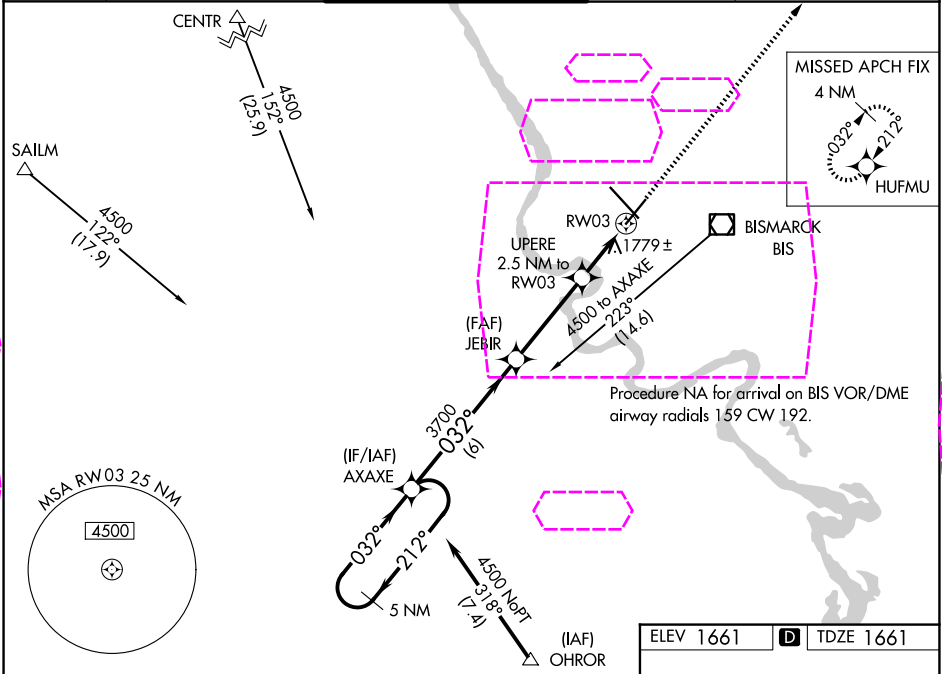


ASR

For uncompensated Baro-VNAV systems,
LNAV/VNAV NA below -18°C (0°F) or
above 33°C (91°F). DME/DME RNP-0.3 NA.

MISSED APPROACH: Climb to
4000 direct HUFMU and hold.

ATIS 119.35	BISMARCK APP CON ★ 126.3 298.9	BISMARCK TOWER ★ 118.3 (CTAF) 0 257.8	GND CON 121.9	UNICOM 122.95
-----------------------	--	---	-------------------------	-------------------------



CATEGORY	A	B	C	D
LPV DA	1861-3/4 200 (200-3/4)			
LNAV/VNAV DA	2081-13/8 420 (500-13/8)			
LNAV MDA	2040-1 379 (400-1)			
CIRCLING	2200-1 539 (600-1)	2460-2 1/4 799 (800-2 1/4)	2460-2 1/2 799 (800-2 1/2)	

BISMARCK, NORTH DAKOTA
Amdt 2B 23APR20

46°46'N-100°45'W

RNAV (GPS) RWY 3

BISMARCK MUNI (BIS)

NC-1, 07 AUG 2025 to 04 SEP 2025

NC-1, 07 AUG 2025 to 04 SEP 2025