

BISMARCK, NORTH DAKOTA

AL-51 (FAA)

22307

WAAS CH <b>56599</b> <b>W31A</b>	APP CRS <b>311°</b>	Rwy Idg <b>8794</b> TDZE <b>1645</b> Apt Elev <b>1661</b>
--	------------------------	---

# RNAV (GPS) RWY 31

BISMARCK MUNI (BIS)

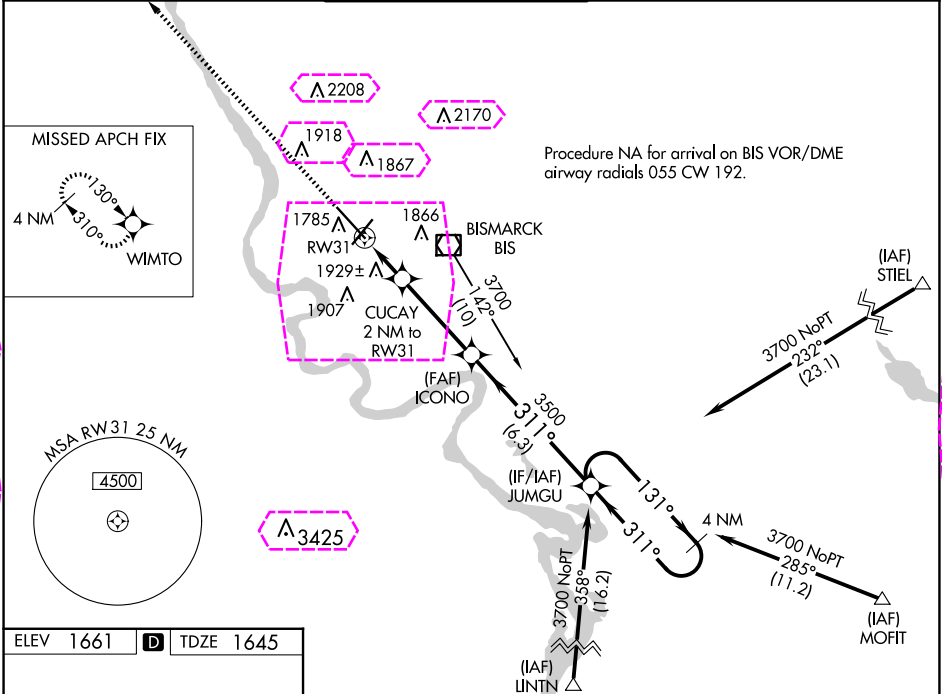
**ASR**

For uncompensated Baro-VNAV systems, LNAV/VNAV NA below -18°C (0°F) or above 33°C (91°F). DME/DME RNP-0.3 NA. \*\* RVR 1800 authorized with use of FD or AP or HUD to DA.

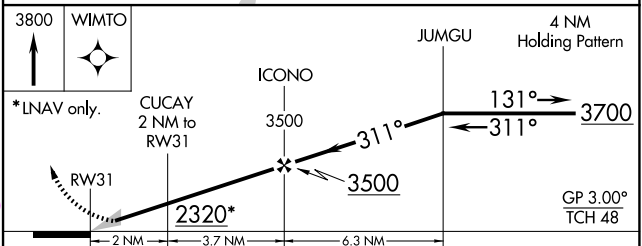
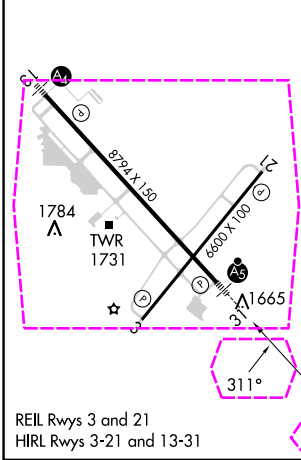
**MALSR**

**MISSED APPROACH:** Climb to 3800 direct WIMTO and hold.

ATIS <b>119.35</b>	BISMARCK APP CON★ <b>126.3 298.9</b>	BISMARCK TOWER★ <b>118.3(CTAF) 0 257.8</b>	GND CON <b>121.9</b>	UNICOM <b>122.95</b>
-----------------------	---	---	-------------------------	-------------------------



ELEV 1661	<b>D</b>	TDZE 1645
-----------	----------	-----------



CATEGORY	A	B	C	D
LPV DA	1845/24 200 (200-½)			
LNAV/VNAV DA	2269-1¾ 624 (700-1¾)			
LNAV MDA	2180/24 535 (600-½)		2180/55 535 (600-1)	
<b>CIRCLING</b>	2200-1 539 (600-1)		2460-2¼ 799 (800-2¼)	2460-2½ 799 (800-2½)

BISMARCK, NORTH DAKOTA  
Amdt 1C 23APR20

46°46'N-100°45'W

BISMARCK MUNI (BIS)  
**RNAV (GPS) RWY 31**

BISMARCK, NORTH DAKOTA

AL-51 (FAA)

25219

WAAS CH <b>56599</b> <b>W31A</b>	APP CRS <b>311°</b>	Rwy Ldg TDZE <b>1645</b> Apt Elev <b>1661</b>
--	------------------------	---

# RNAV (GPS) RWY 31

BISMARCK MUNI (BIS)

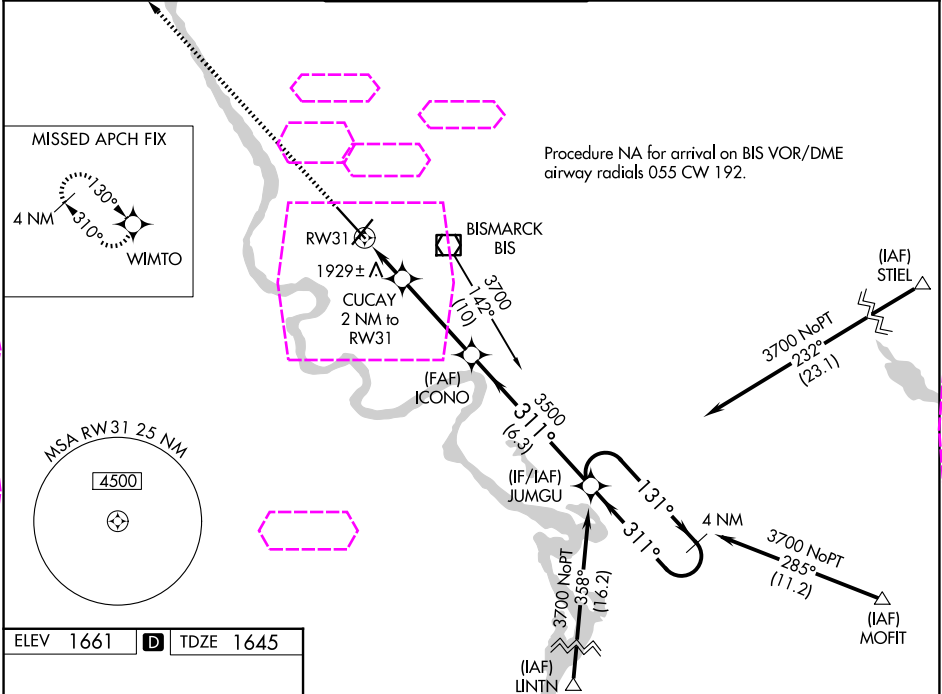
**ASR**

For uncompensated Baro-VNAV systems, LNAV/VNAV NA below -18°C (0°F) or above 33°C (91°F). DME/DME RNP-0.3 NA. \*\* RVR 1800 authorized with use of FD or AP or HUD to DA.

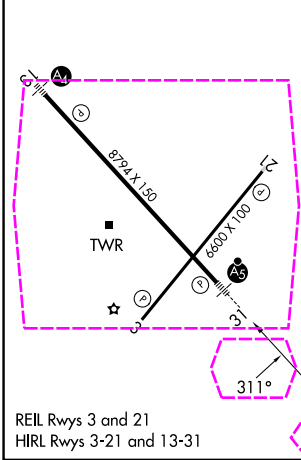
**MALSR**



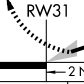
**MISSED APPROACH:** Climb to 3800 direct WIMTO and hold.

ATIS <b>119.35</b>	BISMARCK APP CON★ <b>126.3 298.9</b>	BISMARCK TOWER★ <b>118.3(CTAF) 0 257.8</b>	GND CON <b>121.9</b>	UNICOM <b>122.95</b>
-----------------------	---	---	-------------------------	-------------------------



ELEV 1661	<b>D</b>	TDZE 1645
-----------	----------	-----------



3800	WIMTO	JUMGU			4 NM Holding Pattern
					
*LNAV only.	CUCAY 2 NM to RW31	ICONO 3500	311°	131° → ← 311°	3700
	2320*	3500	GP 3.00° TCH 48		
CATEGORY	A	B	C	D	
LPV DA	1845/24 200 (200-½)				
LNAV/ VNAV DA	2269-1¾ 624 (700-1¾)				
LNAV MDA	2180/24 535 (600-½)		2180/55 535 (600-1)		
CIRCLING	2200-1 539 (600-1)		2460-2¼ 799 (800-2¼)	2460-2½ 799 (800-2½)	

BISMARCK, NORTH DAKOTA  
Amdt 1C 23APR20

46°46'N-100°45'W

BISMARCK MUNI (BIS)  
**RNAV (GPS) RWY 31**

NC-1, 07 AUG 2025 to 04 SEP 2025

NC-1, 07 AUG 2025 to 04 SEP 2025