

BISMARCK, NORTH DAKOTA

AL-51 (FAA)


22307

WAAS CH <b>53520</b> <b>W21A</b>	APP CRS <b>212°</b>	Rwy ldg TDZE Apt Elev	<b>6600</b> <b>1661</b> <b>1661</b>
--	------------------------	-----------------------------	---

# RNAV (GPS) RWY 21

BISMARCK MUNI (BIS)

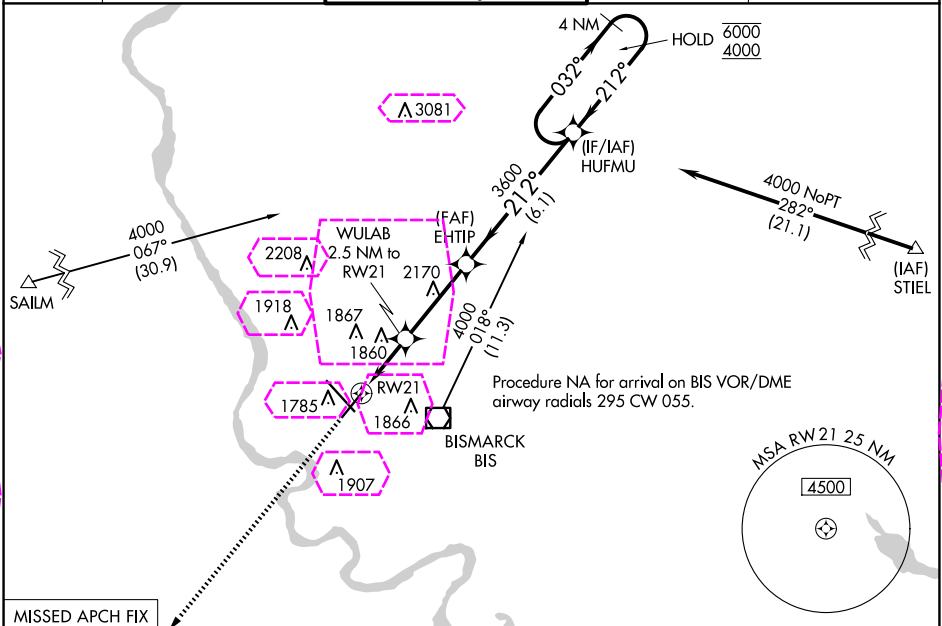
RNP APCH.

**ASR**

For uncompensated Baro-VNAV systems, LNAV/VNAV NA below -22°C or above 54°C.

MISSED APPROACH:  
Climb to 4500 direct  
AXAXE and hold.


ATIS <b>119.35</b>	BISMARCK APP CON ★ <b>126.3 298.9</b>	BISMARCK TOWER ★ <b>118.3 (CTAF) 0 257.8</b>	GND CON <b>121.9</b>	UNICOM <b>122.95</b>
-----------------------	--	---	-------------------------	-------------------------



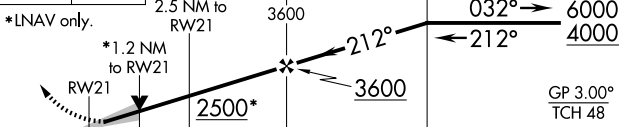
MISSED APCH FIX  
AXAXE



4500

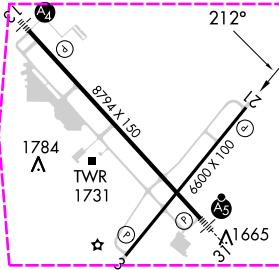


\*LNAV only.



CATEGORY	A	B	C	D
LPV DA		1861-3/4	200 (200-3/4)	
LNAV/VNAV DA		1970-7/8	309 (400-7/8)	
LNAV MDA	2100-1	439 (500-1)	2100-1 1/4	439 (500-1 1/4)
<b>CIRCLING</b>	2200-1	539 (600-1)	2460-2 1/4 799 (800-2 1/4)	2460-2 1/2 799 (800-2 1/2)

ELEV 1661 **D** TDZE 1661



REIL Rwy 3 and 21  
HIRL Rwy 3-21 and 13-31

BISMARCK, NORTH DAKOTA  
Amdt 2 08NOV18

46°46'N-100°45'W

BISMARCK MUNI (BIS)  
RNAV (GPS) RWY 21

NC-1, 10 JUL 2025 to 07 AUG 2025

NC-1, 10 JUL 2025 to 07 AUG 2025

BISMARCK, NORTH DAKOTA

AL-51 (FAA)


25219

WAAS CH <b>53520</b> <b>W21A</b>	APP CRS <b>212°</b>	Rwy Ldg TDZE Apt Elev	<b>6600</b> <b>1661</b> <b>1661</b>
--	------------------------	-----------------------------	---

# RNAV (GPS) RWY 21

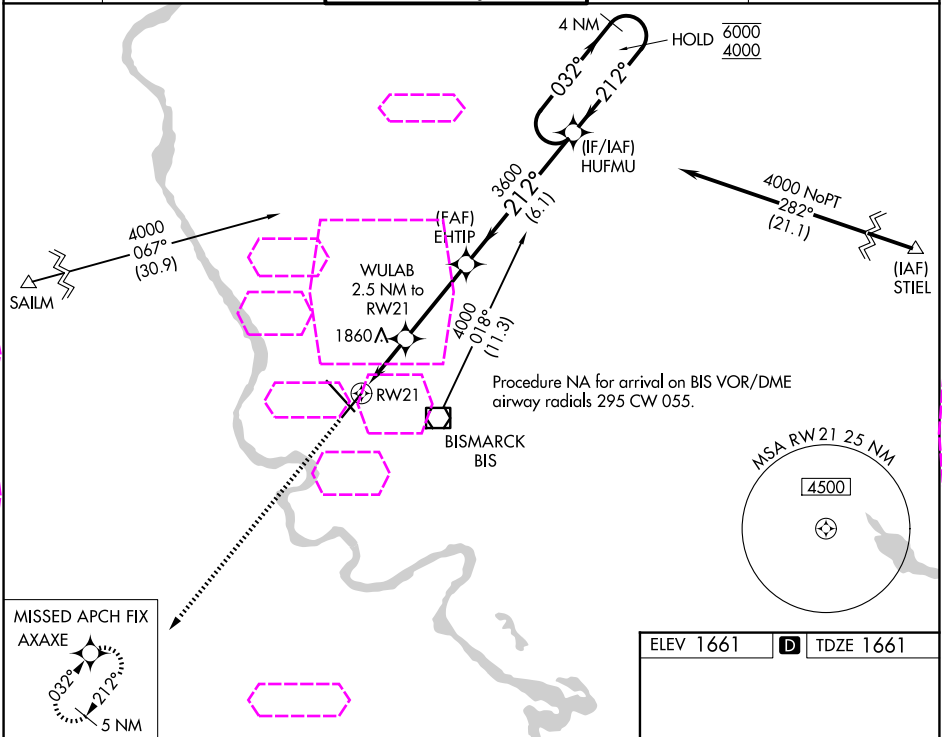
BISMARCK MUNI (BIS)

RNP APCH.

 For uncompensated Baro-VNAV systems, LNAV/VNAV NA below -22°C or above 54°C.

MISSED APPROACH:  
Climb to 4500 direct  
AXAXE and hold.

ATIS <b>119.35</b>	BISMARCK APP CON ★ <b>126.3 298.9</b>	BISMARCK TOWER ★ <b>118.3 (CTAF) 0 257.8</b>	GND CON <b>121.9</b>	UNICOM <b>122.95</b>
-----------------------	--	---	-------------------------	-------------------------



MISSED APCH FIX  
AXAXE

4500

AXAXE

WULAB  
2.5 NM to  
RW21

EHTIP  
3600

HUFMU  
4 NM  
Holding Pattern

\*LNAV only.


\*1.2 NM  
to RW21

2500\*

3600

GP 3.00°  
TCH 48

CATEGORY	A	B	C	D
LPV DA		1861-3/4	200 (200-3/4)	
LNAV/VNAV DA		1970-7/8	309 (400-7/8)	
LNAV MDA	2100-1	439 (500-1)	2100-1 1/4	439 (500-1 1/4)
CIRCLING	2200-1	539 (600-1)	2460-2 1/4 799 (800-2 1/4)	2460-2 1/2 799 (800-2 1/2)

ELEV 1661  TDZE 1661

TWR

REIL Rwy 3 and 21  
HIRL Rwy 3-21 and 13-31

BISMARCK, NORTH DAKOTA  
Amdt 2 08NOV18

46°46'N-100°45'W

BISMARCK MUNI (BIS)  
RNAV (GPS) RWY 21

NC-1, 07 AUG 2025 to 04 SEP 2025

NC-1, 07 AUG 2025 to 04 SEP 2025