

BISMARCK, NORTH DAKOTA

AL-51 (FAA)

22307

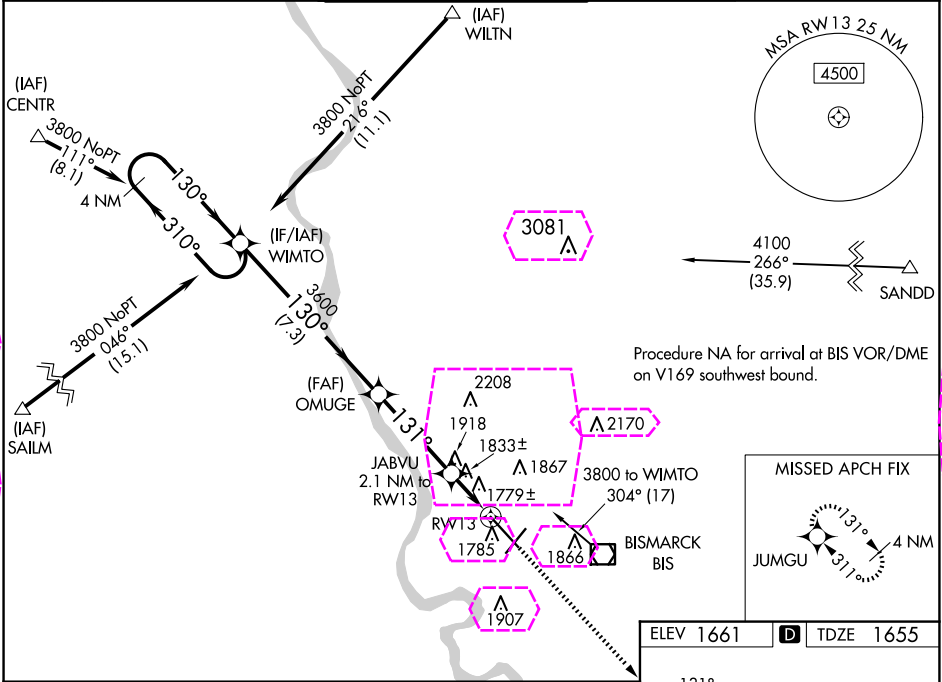
WAAS CH <b>86920</b> <b>W13A</b>	APP CRS <b>131°</b>	Rwy Idg <b>8794</b> TDZE <b>1655</b> Apt Elev <b>1661</b>
--	------------------------	---

# RNAV (GPS) RWY 13

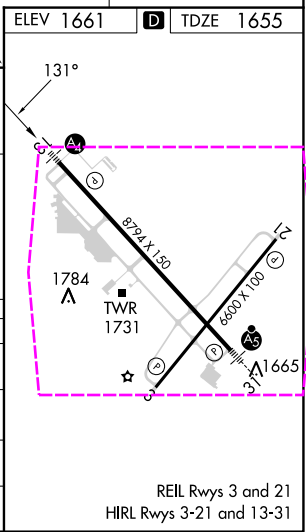
BISMARCK MUNI (BIS)

 ASR	Inoperative table does not apply. For uncompensated Baro-VNAV systems, LNAV/VNAV NA below -18°C (0°F) or above 33°C (91°F). DME/DME RNP-0.3 NA.	MALS 	MISSED APPROACH: Climb to 3700 direct JUMGU and hold.
---------	---	----------	---

ATIS <b>119,35</b>	BISMARCK APP CON ★ <b>126.3 298.9</b>	BISMARCK TOWER ★ <b>118.3 (CTAF) 0 257.8</b>	GND CON <b>121.9</b>	UNICOM <b>122,95</b>
-----------------------	--	---	-------------------------	-------------------------



4 NM Holding Pattern		WIMTO	OMUGE	JABVU 2.1 NM to RW13	JUMGU
3800 ← 310° 130° →		3600	3600	*1.2 NM to RW13	3700
GP 3.00° TCH 58		7.3 NM	3.8 NM	0.9	1.2
CATEGORY	A	B	C	D	
LPV DA	1855-¾ 200 (200-¾)				
LNAV/VNAV DA	2083-1⅜ 428 (500-1⅜)				
LNAV MDA	2100-1	445 (500-1)	2100-1⅜	445 (500-1⅜)	
<b>CIRCLING</b>	2200-1	539 (600-1)	2460-2¼ 799 (800-2¼)	2460-2½ 799 (800-2½)	



BISMARCK, NORTH DAKOTA  
Orig-B 23APR20

46°46'N-100°45'W

# RNAV (GPS) RWY 13

NC-1, 10 JUL 2025 to 07 AUG 2025

NC-1, 10 JUL 2025 to 07 AUG 2025

BISMARCK, NORTH DAKOTA


AL-51 (FAA)

25219

WAAS CH <b>86920</b> <b>W13A</b>	APP CRS <b>131°</b>	Rwy Ldg <b>8794</b> TDZE <b>1655</b> Apt Elev <b>1661</b>
--	------------------------	---

# RNAV (GPS) RWY 13

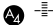
BISMARCK MUNI (BIS)



ASR

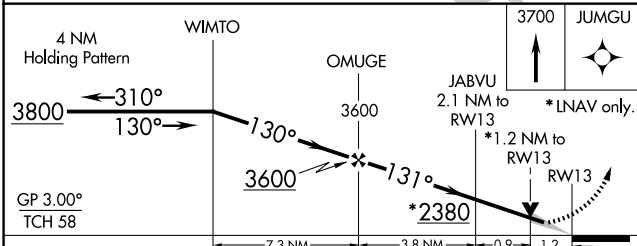
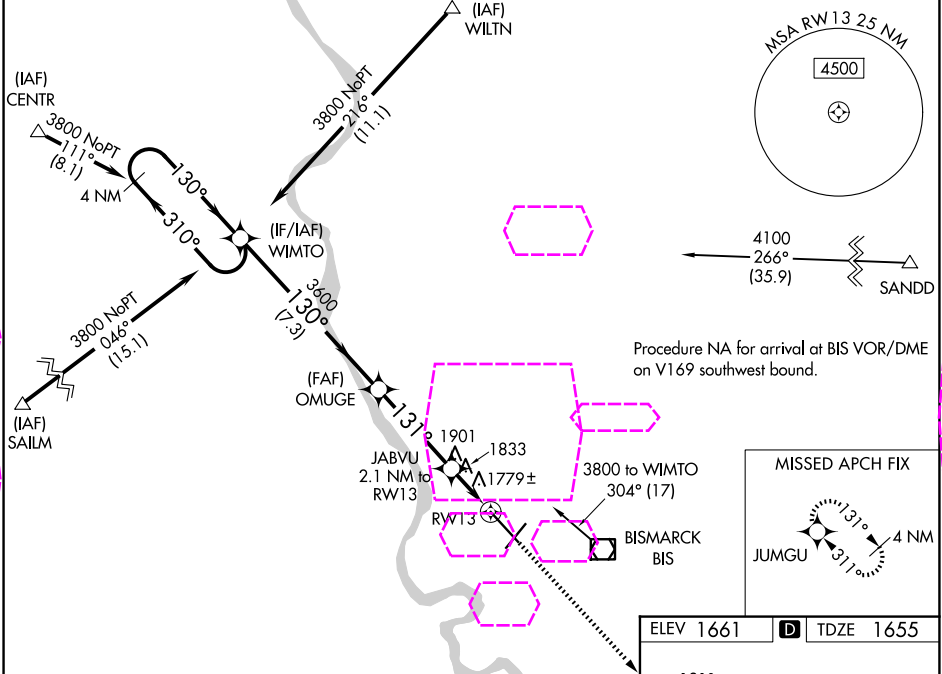
Inoperative table does not apply. For uncompensated Baro-VNAV systems, LNAV/VNAV NA below -18°C (0°F) or above 33°C (91°F). DME/DME RNP-0.3 NA.

MALS



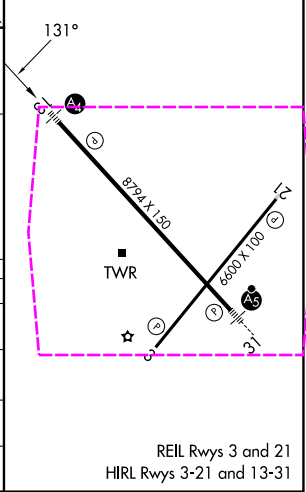
MISSED APPROACH: Climb to 3700 direct JUMGU and hold.

ATIS <b>119,35</b>	BISMARCK APP CON ★ <b>126.3 298.9</b>	BISMARCK TOWER ★ <b>118.3 (CTAF) 0 257.8</b>	GND CON <b>121.9</b>	UNICOM <b>122,95</b>
-----------------------	--	---	-------------------------	-------------------------



ELEV 1661	D	TDZE 1655
-----------	---	-----------

CATEGORY	A	B	C	D
LPV DA	1855-3/4 200 (200-3/4)			
LNAV/VNAV DA	2083-1 3/8 428 (500-1 3/8)			
LNAV MDA	2100-1	445 (500-1)	2100-1 3/8	445 (500-1 3/8)
CIRCLING	2200-1	539 (600-1)	2460-2 1/4 799 (800-2 1/4)	2460-2 1/2 799 (800-2 1/2)



BISMARCK, NORTH DAKOTA

Orig-B 23APR20

46°46'N-100°45'W

BISMARCK MUNI (BIS)

# RNAV (GPS) RWY 13

NC-1, 07 AUG 2025 to 04 SEP 2025

NC-1, 07 AUG 2025 to 04 SEP 2025