

BISMARCK, NORTH DAKOTA

AL-51 (FAA)

22307

LOC I-BZX 111.5	APP CRS 131°	Rwy Idg 8794 TDZE 1655 Apt Elev 1661
---------------------------	------------------------	--

ILS or LOC RWY 13
BISMARCK MUNI (BIS)

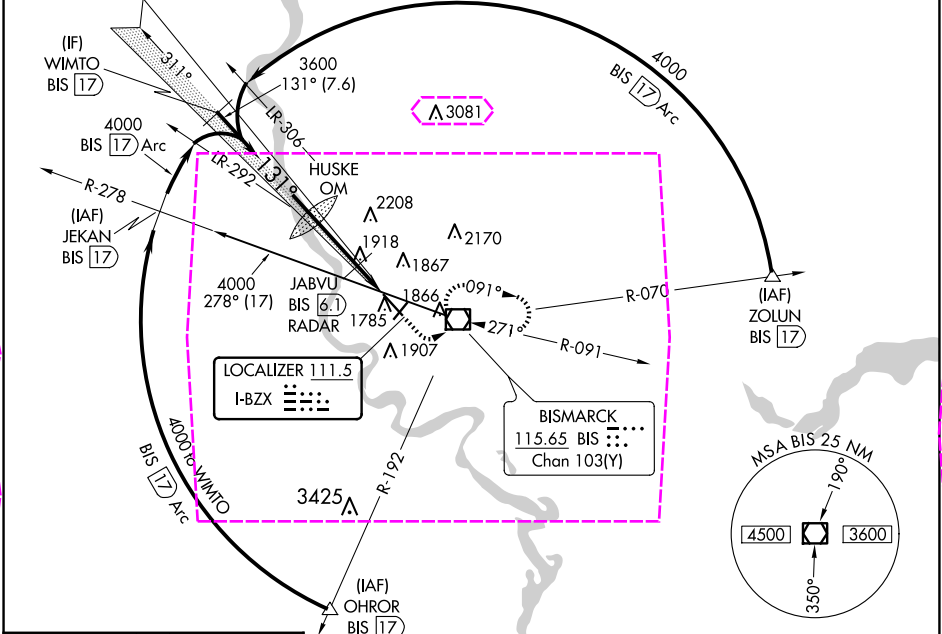
DME required for procedure entry. DME required.

ASR Inop table does not apply to S-ILS 13. DME from BIS VOR/DME. Simultaneous reception of I-BZX and BIS DME required. # DME from BIS VOR/DME.

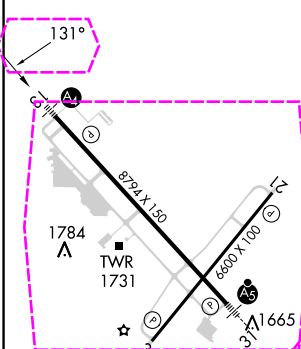


MISSED APPROACH: Climb to 2200 then climbing left turn to 3600 direct BIS VOR/DME and hold, continue climb-in-hold to 3600.

ATIS 119.35	BISMARCK APP CON ★ 126.3 298.9	BISMARCK TOWER ★ 118.3 (CTAF) 0 257.8	GND CON 121.9	UNICOM 122.95
-----------------------	--	---	-------------------------	-------------------------



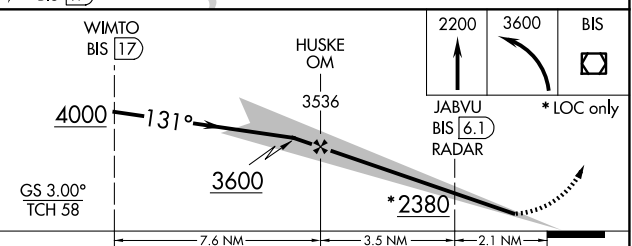
ELEV 1661	D	TDZE 1655
-----------	---	-----------



REIL Rwy 3 and 21
HIRL Rwy 3-21 and 13-31

FAF to MAP 5.6 NM

Knots	60	90	120	150	180
Min:Sec	5:36	3:44	2:48	2:14	1:52



CATEGORY	A	B	C	D
S-ILS 13	1855-¾ 200 (200-¾)			
S-LOC 13	2380-¾	725 (800-¾)	2380-1¾	725 (800-1¾)
CIRCLING	2380-1	719 (800-1)	2460-2¼ 799 (800-2¼)	2460-2½ 799 (800-2½)
# JABVU FIX MINIMUMS				
S-LOC 13	2180-¾	525 (600-¾)	2180-1¼	525 (600-1¼)
CIRCLING	2200-1	539 (600-1)	2460-2¼ 799 (800-2¼)	2460-2½ 799 (800-2½)

BISMARCK, NORTH DAKOTA

Amdt 4A 23APR20

46°46'N-100°45'W

BISMARCK MUNI (BIS)

ILS or LOC RWY 13

BISMARCK, NORTH DAKOTA

AL-51 (FAA)

25219

LOC I-BZX 111.5	APP CRS 131°	Rwy Ldg 8794 TDZE 1655 Apt Elev 1661
---------------------------	------------------------	--

ILS or LOC RWY 13

BISMARCK MUNI (BIS)

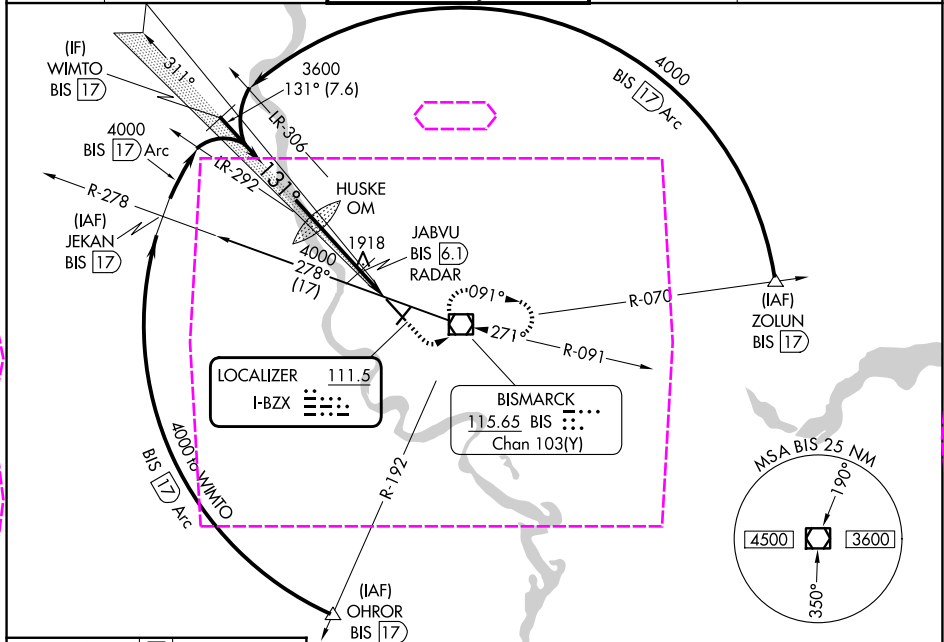
DME required for procedure entry. DME required.

ASR Inop table does not apply to S-ILS 13. DME from BIS VOR/DME. Simultaneous reception of I-BZX and BIS DME required. # DME from BIS VOR/DME.

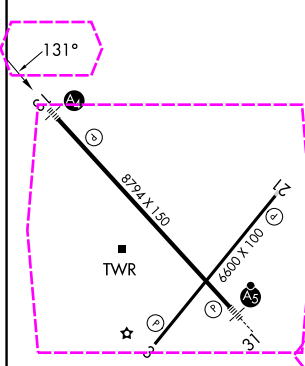


MISSED APPROACH: Climb to 2200 then climbing left turn to 3600 direct BIS VOR/DME and hold, continue climb-in-hold to 3600.

ATIS 119.35	BISMARCK APP CON ★ 126.3 298.9	BISMARCK TOWER ★ 118.3 (CTAF) 0 257.8	GND CON 121.9	UNICOM 122.95
-----------------------	--	---	-------------------------	-------------------------



ELEV 1661	D	TDZE 1655
-----------	---	-----------



REIL Rwy 3 and 21	HIRL Rwy 3-21 and 13-31
FAF to MAP 5.6 NM	
Knots	60 90 120 150 180
Min:Sec	5:36 3:44 2:48 2:14 1:52

WIMTO BIS 17	HUSKE OM	2200	3600	BIS
4000	131°	3536	3280	JABVU BIS 6.1 RADAR
GS 3.00°	TCH 58	7.6 NM	3.5 NM	2.1 NM
CATEGORY	A	B	C	D
S-ILS 13	1855-¾ 200 (200-¾)			
S-LOC 13	2380-¾	725 (800-¾)	2380-1¾	725 (800-1¾)
CIRCLING	2380-1	719 (800-1)	2460-2¼	2460-2½
# JABVU FIX MINIMUMS				
S-LOC 13	2180-¾	525 (600-¾)	2180-1¼	525 (600-1¼)
CIRCLING	2200-1	539 (600-1)	2460-2¼	2460-2½

BISMARCK, NORTH DAKOTA
Amdt 4A 23APR20

46°46'N-100°45'W

ILS or LOC RWY 13

NC-1, 07 AUG 2025 to 04 SEP 2025

NC-1, 07 AUG 2025 to 04 SEP 2025